

This drawing and all its contents is the sole intellectual property of the Hospital Services Consultancy Corporation (HSCC) Ltd. Copying of this drawing or part thereof for use in any form whatsoever without the written permission of HSCC is prohibited.

NOTES
 1. ALL DIMENSIONS ON THIS DRAWING ARE IN MM.
 2. ONLY WRITTEN DIMENSIONS ARE TO BE FOLLOWED. DRAWINGS SHOULD NOT BE SCALED UNDER ANY CIRCUMSTANCES.

LEGEND:

S. NO	DESCRIPTION	SYMBOL
1.	FIRE HOSE CABINET	
2.	FIRE PIPE LINE 150Ø	
3.	AIR RELEASE VALVE	
4.	NON-RETURN VALVE	
5.	SLUCE VALVE	
6.	COLD WATER SUPPLY LINE	
7.	FIRE HOSE REEL	
8.	LANDING VALVE	
9.	TERRACE FIRE PUMP 450 LPM 30 M HEAD	

FIRE EXTINGUISHER

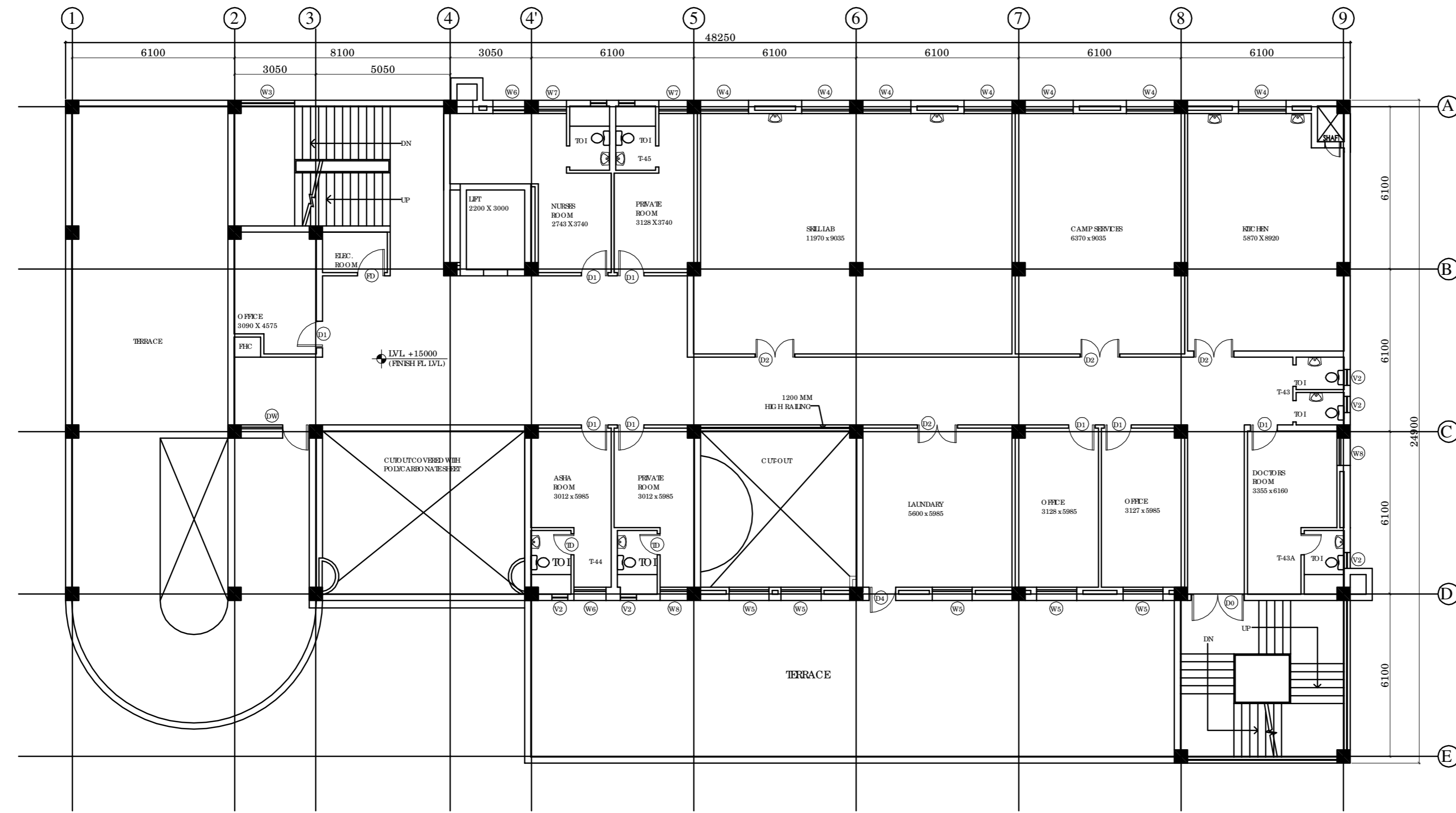
1.	ABC DRY POWDER TYPE FIRE EXTINGUISHER	
2.	CARBON DIOXIDE GAS TYPE FIRE EXTINGUISHER	
3.	WATER TYPE FIRE EXTINGUISHER	
4.	MANUAL CALL BOX	

NOTES ON FIRE FIGHTING

- Every FHC shall be consisting of as per following.
 - 63mm dia. single headed Hydrant Valve.
 - 2nos. 63mm dia. 15mts long RRL Hose reel.
 - 20mm dia 36.5mt first aid hose reel with nozzle.
 - 63mm dia. male and female INST type coupling.
 - 20mm dia branch pipe with 20mm nozzle.
 - 2 NOS FIRE EXTINGUISHERS

LEGEND FOR VERTICAL PIPE

- 150Ø MS FIRE RISER
- SPRINKLER RISER
- 50Ø SPRINKLER DRAIN PIPE



FOURTH FLOOR PLAN

REVISION

NO.	DESCRIPTION

PROJECT

NRHM PROJECT

Proposed 100 Bedded Hospital at Mandi Town, HP

TITLE

FIRE-TENDER DRAWING

FOURTH FLOOR PLAN
 COVERED AREA - 723.64 SQM

HSCC/MANDI/HD/HOSP/FF-08/R-0

Drawing No.

Job No. 1:100 Scale 11-07-2014 Date

App by SS Rev. by LK Prep. by

This drawing and all its contents are the sole intellectual property of the Hospital Services Consultancy Corporation (HSCC) Ltd. Copying of this drawing or part thereof for any use in any form whatsoever without the written permission of HSCC is prohibited.

NOTES
 1. ALL DIMENSIONS ON THIS DRAWING ARE IN MM.
 2. ONLY WRITTEN DIMENSIONS ARE TO BE FOLLOWED. DRAWINGS SHOULD NOT BE SCALED UNDER ANY CIRCUMSTANCES.

LEGEND

S. NO	DESCRIPTION	SYMBOL
1.	FIRE HOSE CABINET	
2.	FIRE PIPE LINE (150Ø)	
3.	AIR RELEASE VALVE	
4.	NON-RETURN VALVE	
5.	SLUCE VALVE	
6.	COLD WATER SUPPLY LINE	
7.	FIRE HOSE REEL	
8.	LANDING VALVE	
9.	TERRACE FIRE PUMP 450 LPM 30 M HEAD	

FIRE EXTINGUISHER

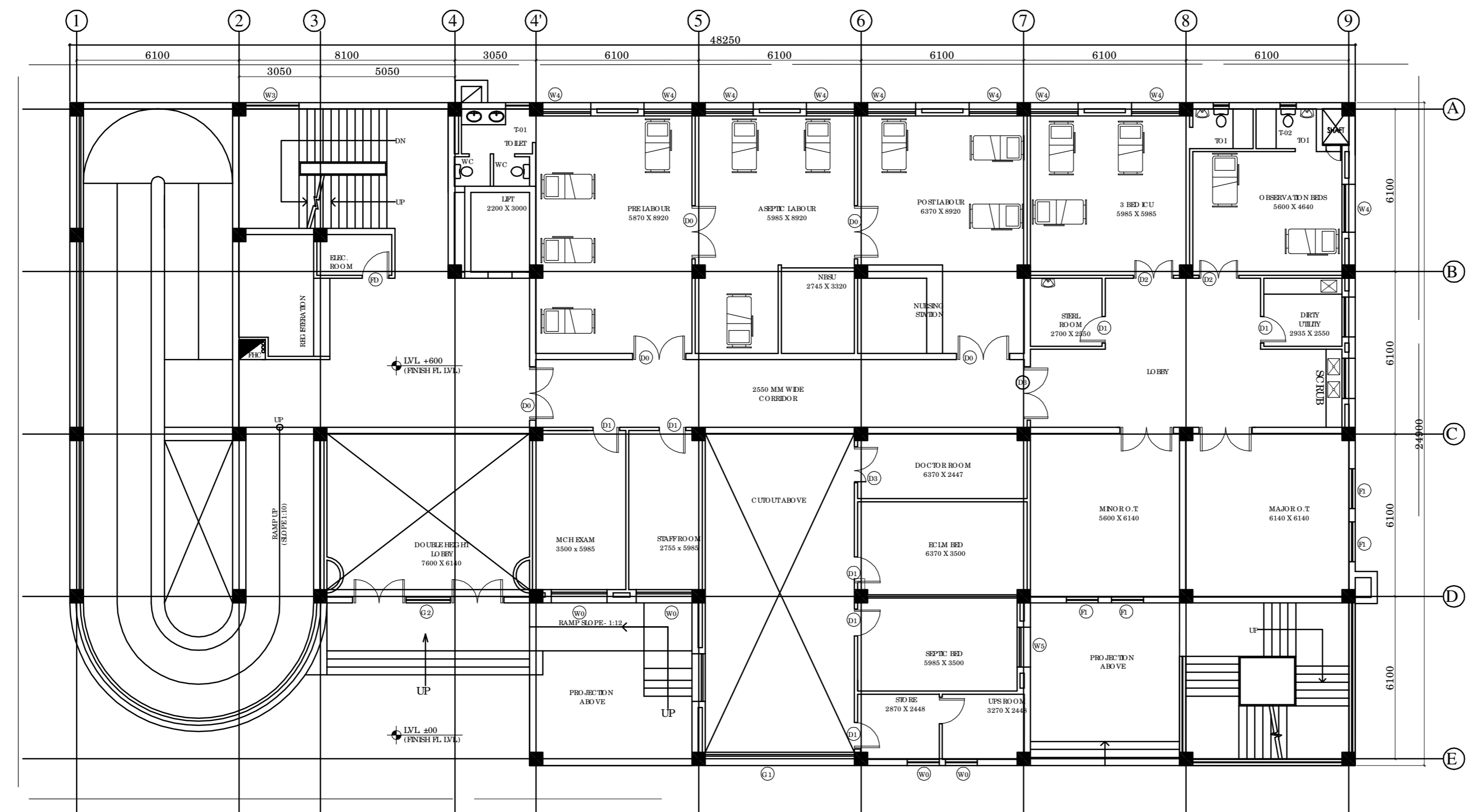
1.	ABC DRY POWDER TYPE FIRE EXTINGUISHER	
2.	CARBON DIOXIDE GAS TYPE FIRE EXTINGUISHER	
3.	WATER TYPE FIRE EXTINGUISHER	
4.	MANUAL CALL BOX	

NOTES ON FIRE FIGHTING

- Every FHC shall be consisting of as per IS following.
 - 63mm dia. single headed Hydrant Valve.
 - 2nos. 63mm dia. 15mts long RRL Hose reel.
 - 20mm dia 36.5m first aid hose reel with nozzle.
 - 63mm dia. male and female INST type coupling.
 - 20mm dia branch pipe with 20mm nozzle.
 - 2 NOS FIRE EXTINGUISHERS

LEGEND FOR VERTICAL PIPE

- 150Ø MS FIRE RISER
- SPRINKLER RISER
- 50Ø SPRINKLER DRAIN PIPE



GROUND FLOOR PLAN

REVISION

NO.	DESCRIPTION

PROJECT

NRHM PROJECT

Proposed 100 Bedded Hospital at Mandi Town, HP

TITLE

FIRE-TENDER DRAWING

GROUND FLOOR PLAN
COVERED AREA - 1062 SQM

HSCC/MANDI/TD/HOSP/FF-04/R-0

Drawing No.

Job No. 1:100 Scale 11-07-2014 Date

App by SS Rev. by LK Prep. by

HSCC (INDIA) LIMITED
 (A GOVERNMENT OF INDIA ENTERPRISE)
HSCC
 NEW DELHI INDIA

PRODUCED BY AN AUTODESK EDUCATIONAL PRODUCT

PRODUCED BY AN AUTODESK EDUCATIONAL PRODUCT

This drawing and all its contents is the sole intellectual property of the Hospital Services Consulting Corporation (HSCC) Ltd. Copying of this drawing or part thereof for any use is strictly prohibited without the written permission of HSCC is prohibited.

NOTES
 1. ALL DIMENSIONS ON THIS DRAWING ARE IN MM.
 2. ONLY WRITTEN DIMENSIONS ARE TO BE FOLLOWED. DRAWINGS SHOULD NOT BE SCALED UNDER ANY CIRCUMSTANCES.

LEGEND

S. NO	DESCRIPTION	SYMBOL
1.	FIRE HOSE CABINET	
2.	FIRE PIPE LINE 150Ø	
3.	AIR RELEASE VALVE	
4.	NON-RETURN VALVE	
5.	SLUCE VALVE	
6.	COLD WATER SUPPLY LINE	
7.	FIRE HOSE REEL	
8.	LANDING VALVE	
9.	TERRACE FIRE PUMP 450 LPM 30 M HEAD	

FIRE EXTINGUISHER

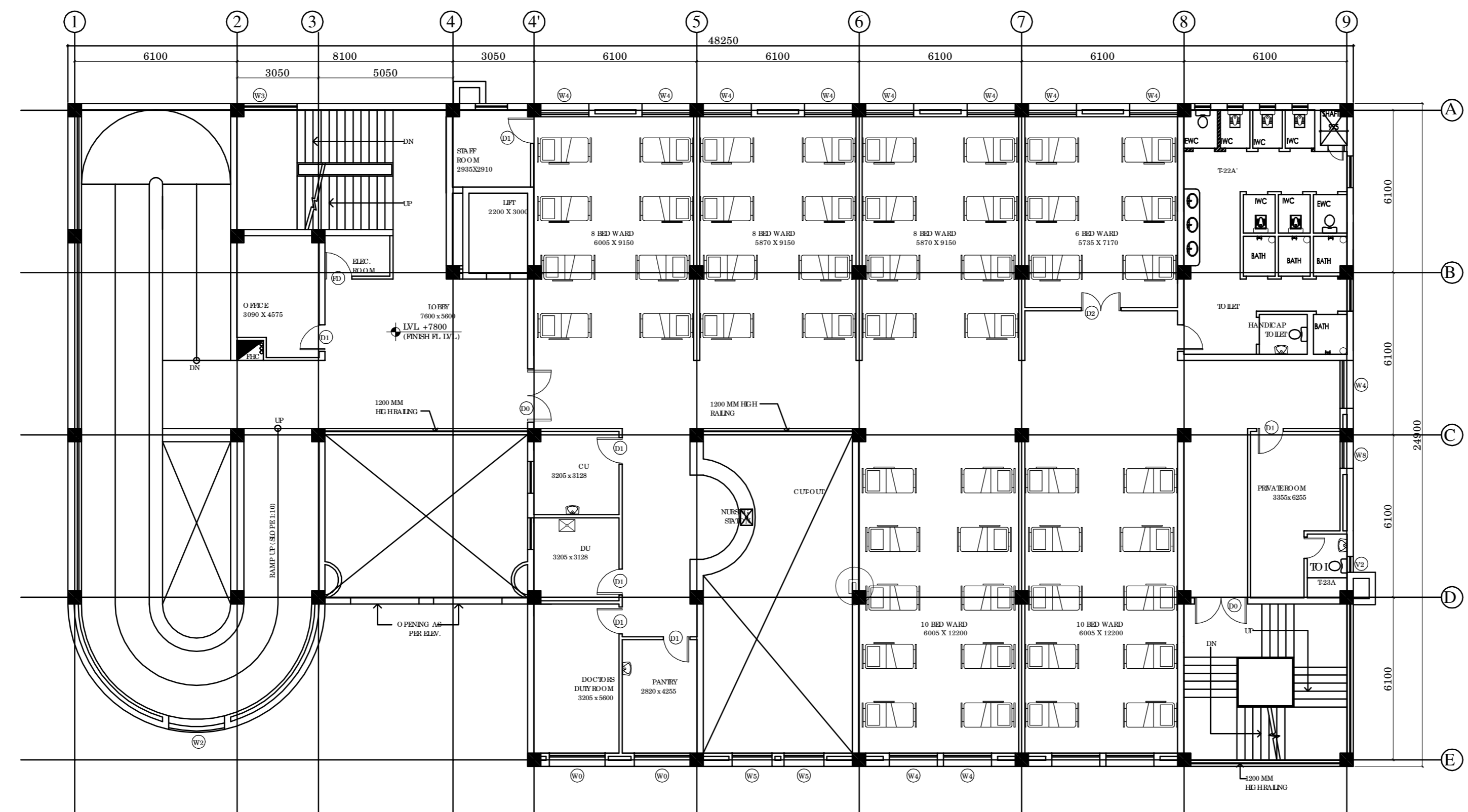
1.	ABC DRY POWDER TYPE FIRE EXTINGUISHER	
2.	CARBON DIOXIDE GAS TYPE FIRE EXTINGUISHER	
3.	WATER TYPE FIRE EXTINGUISHER	
4.	MANUAL CALL BOX	

NOTES ON FIRE FIGHTING

- Every FHC shall be consisting of as per IS following.
 - 63mm dia. single headed Hydrant Valve.
 - 2nos. 63mm dia. 15mts long RRL Hose reel.
 - 20mm dia 36.5mt first aid hose reel with nozzle.
 - 63mm dia. male and female INST type coupling.
 - 20mm dia branch pipe with 20mm nozzle.
 - 2 NOS FIRE EXTINGUISHERS

LEGEND FOR VERTICAL PIPE

- 150Ø MS FIRE RISER
- SPRINKLER RISER
- 50Ø SPRINKLER DRAIN PIPE



SECOND FLOOR PLAN - 50 BEDS

REVISION

NO.	DESCRIPTION

PROJECT

NRHM PROJECT
 Proposed 100 Bedded Hospital at Mandi Town, HP

TITLE

FIRE-TENDER DRAWING
 SECOND FLOOR PLAN
 COVERED AREA - 1006.92 SQM

HSCC / MANDI / TD / HO SP / FF-06 / R-0
 Drawing No.

Job No. 1:100 Scale 11-07-2014 Date

App by Rev. by Prep. by

PRODUCED BY AN AUTODESK EDUCATIONAL PRODUCT

PRODUCED BY AN AUTODESK EDUCATIONAL PRODUCT

This drawing and all its contents is the sole intellectual property of the Hospital Services Consulting Corporation (HSCC) Ltd. Copies of this drawing or part thereof for use in any form whatsoever, without the written permission of HSCC is prohibited.

NOTES
 1. ALL DIMENSIONS ON THIS DRAWING ARE IN MM.
 2. ONLY WRITTEN DIMENSIONS ARE TO BE FOLLOWED. DRAWINGS SHOULD NOT BE SCALED UNDER ANY CIRCUMSTANCES.

LEGEND

S. NO	DESCRIPTION	SYMBOL
1.	FIRE HOSE CABINET	
2.	FIRE PIPE LINE (150Ø)	
3.	AIR RELEASE VALVE	
4.	NON-RETURN VALVE	
5.	SLUCE VALVE	
6.	COLD WATER SUPPLY LINE	
7.	FIRE HOSE REEL	
8.	LANDING VALVE	
9.	TERRACE FIRE PUMP 450 LPM 30 M HEAD	

FIRE EXTINGUISHER

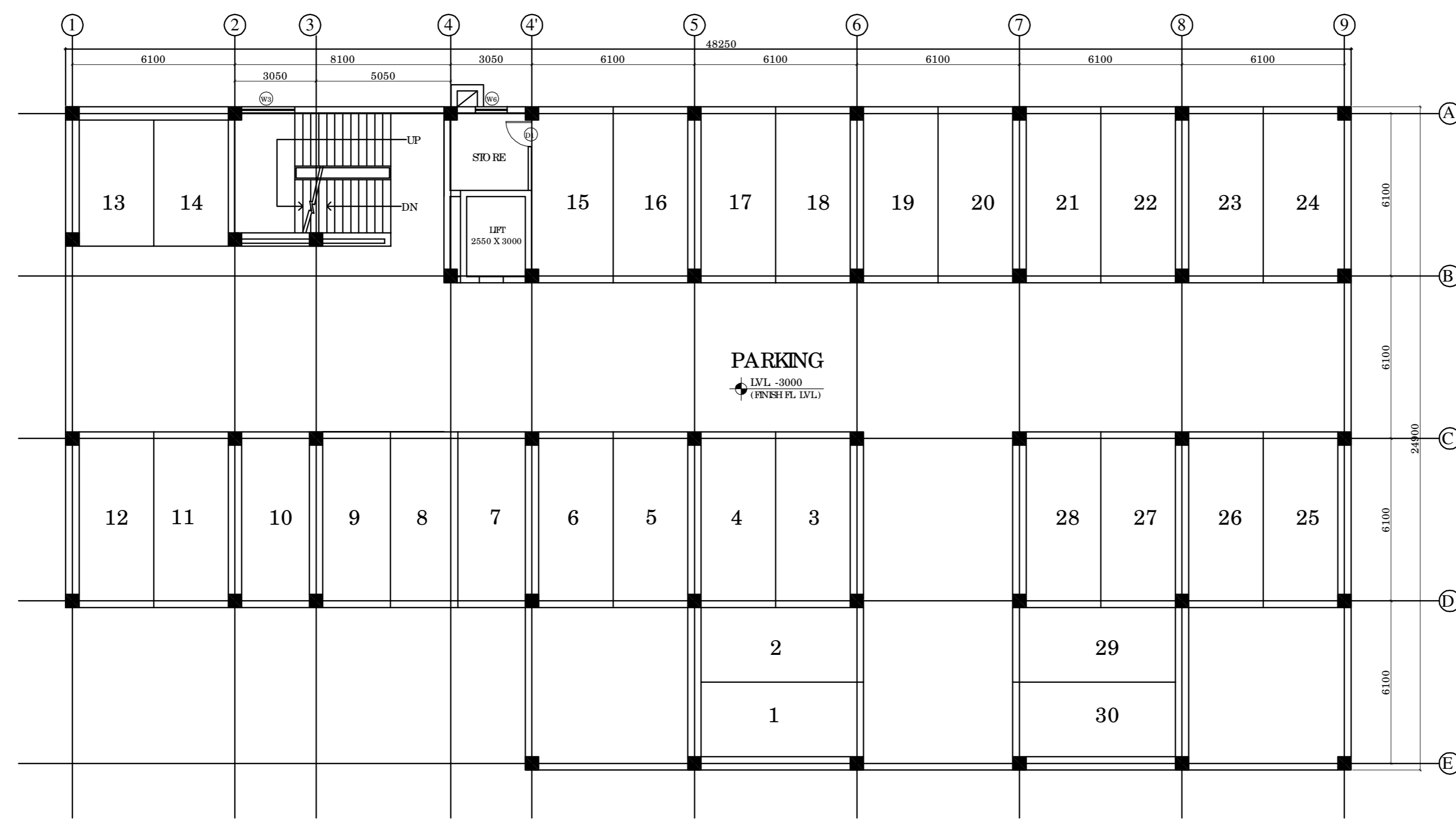
1.	ABC DRY POWDER TYPE FIRE EXTINGUISHER	
2.	CARBON DIOXIDE GAS TYPE FIRE EXTINGUISHER	
3.	WATER TYPE FIRE EXTINGUISHER	
4.	MANUAL CALL BOX	

NOTES ON FIRE FIGHTING

- Every FHC shall be consisting of as per IS following.
 - 63mm dia. single headed Hydrant Valve.
 - 2nos. 63mm dia. 15mts long RRL Hose reel.
 - 20mm dia 36.5mt first aid hose reel with nozzle.
 - 63mm dia. male and female INST type coupling.
 - 20mm dia branch pipe with 20mm nozzle.
 - 2 NOS FIRE EXTINGUISHERS

LEGEND FOR VERTICAL PIPE

- ① 150Ø MS FIRE RISER
- ② SPRI NKLER RISER
- ③ 50Ø SPRI NKLER DRAIN PIPE



STILT PLAN - 1

REVISION

NO.	DESCRIPTION

PROJECT

NRHM PROJECT

Proposed 100 Bedded Hospital at Mandi Town, HP

TITLE

FIRE-TENDER DRAWING

STILT FLOOR - 1 PLAN
 COVERED AREA - 1062 SQM

HSCC / MANDI / TD / HOSP / FF-02 / R-0

Drawing No.

Job No. 1:100 Scale 11-07-2014 Date

App by Rev. by Prep. by

This drawing and its contents is the sole intellectual property of the Hospital Services Consultancy Corporation (HSCC) Ltd. Copying of this drawing or part thereof for use in any form whatsoever without the written permission of HSCC is prohibited.

NOTES
 1. ALL DIMENSIONS ON THIS DRAWING ARE IN MM.
 2. ONLY WRITTEN DIMENSIONS ARE TO BE FOLLOWED. DRAWINGS SHOULD NOT BE SCALED UNDER ANY CIRCUMSTANCES.

LEGEND:

S. NO	DESCRIPTION	SYMBOL
1.	FIRE HOSE CABINET	
2.	FIRE PIPE LINE (150Ø)	
3.	AIR RELEASE VALVE	
4.	NON-RETURN VALVE	
5.	SLUCE VALVE	
6.	COLD WATER SUPPLY LINE	
7.	FIRE HOSE REEL	
8.	LANDING VALVE	
9.	TERRACE FIRE PUMP 450 LPM 30' M.HEAD	

FIRE EXTINGUISHER

1.	ABC DRY POWDER TYPE FIRE EXTINGUISHER	
2.	CARBON DIOXIDE GAS TYPE FIRE EXTINGUISHER	
3.	WATER TYPE FIRE EXTINGUISHER	
4.	MANUAL CALL BOX	

NOTES ON FIRE FIGHTING

- Every FHC shall be consisting of as per listed following.
 - 63mm dia. single headed Hydrant Valve.
 - 2nos. 63mm dia. 15mts long RRL Hose reel.
 - 20mm dia 36.5mt first aid hose reel with 5mm bore nozzle.
 - 63mm dia. male and female INST type coupling.
 - 20mm dia branch pipe with 20mm nozzle.
 - 2 NOS FIRE EXTINGUISHERS

LEGEND FOR VERTICAL PIPE

- ① 150Ø MS FIRE RISER
- ② SPRI NKLER RISER
- ③ 50Ø SPRI NKLER DRAIN PIPE

REVISION

NO.	DESCRIPTION

PROJECT

NRHM PROJECT

Proposed 100 Bedded Hospital at Mandi Town, HP

TITLE

FIRE-TENDER DRAWING

STILT FLOOR - 2 PLAN

COVERED AREA - 1062 SQM

HSCC / MANDI TOWN / HOSPITAL PROJECT / R-0

Drawing No.

Job No.

Scale

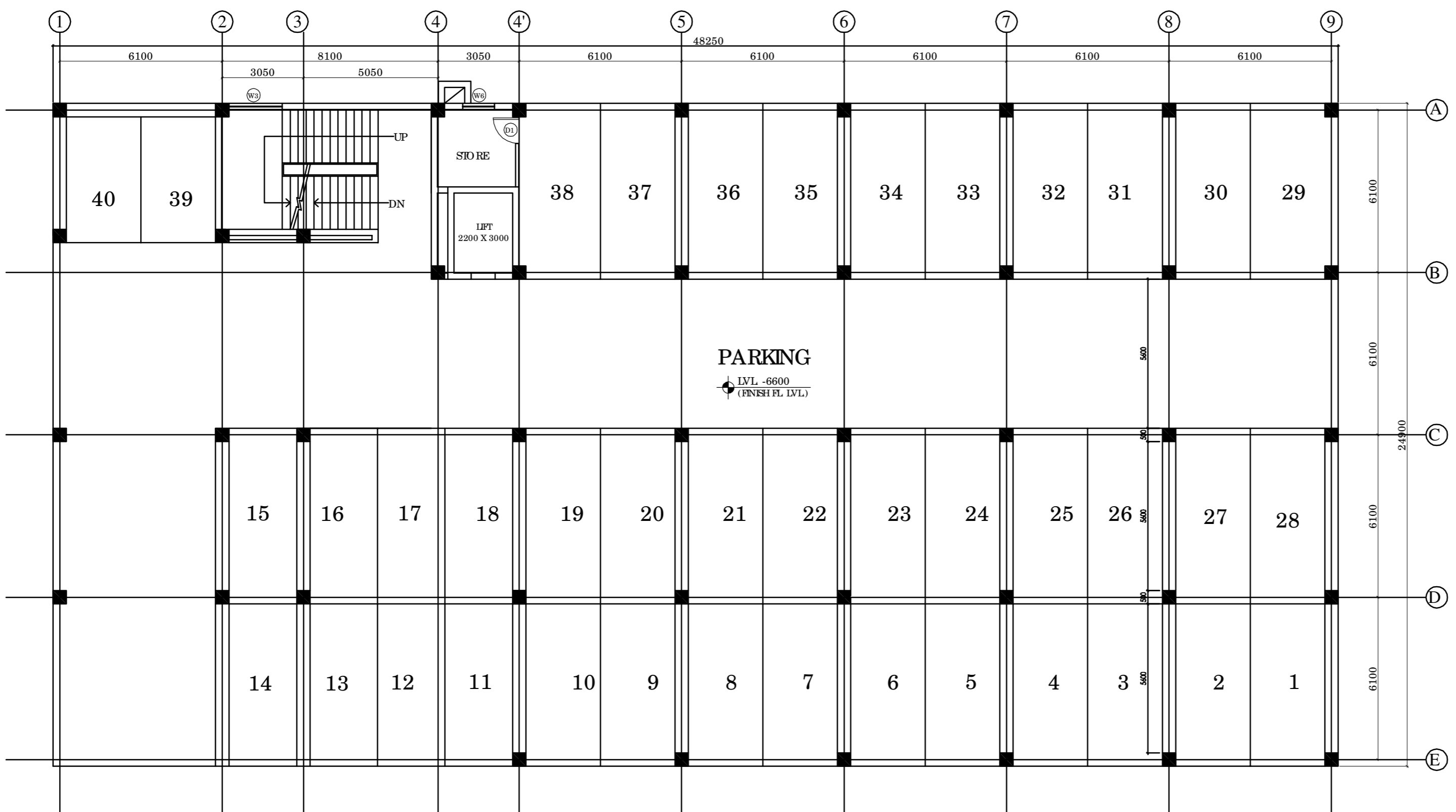
Date

App by

Rev. by

Prep. by

HSCC (INDIA) LIMITED
 (A GOVERNMENT OF INDIA ENTERPRISE)
HSCC
 NEW DELHI INDIA



STILT PLAN - 2

PRODUCED BY AN AUTODESK EDUCATIONAL PRODUCT

PRODUCED BY AN AUTODESK EDUCATIONAL PRODUCT

This drawing and all its contents is the sole intellectual property of the Hospital Services Consultancy Corporation (HSC) Ltd. Copying of this drawing or part thereof for use in any form whatsoever without the written permission of HSC is prohibited.

NOTES
 1. ALL DIMENSIONS ON THIS DRAWING ARE IN MM.
 2. ONLY WRITTEN DIMENSIONS ARE TO BE FOLLOWED. DRAWINGS SHOULD NOT BE SCALED UNDER ANY CIRCUMSTANCES.

LEGEND:

S. NO	DESCRIPTION	SYMBOL
1.	FIRE HOSE CABINET	
2.	FIRE PIPE LINE (150Ø)	
3.	AIR RELEASE VALVE	
4.	NON-RETURN VALVE	
5.	SLUCE VALVE	
6.	COLD WATER SUPPLY LINE	
7.	FIRE HOSE REEL	
8.	LANDING VALVE	
9.	TERRACE FIRE PUMP 450 LPM 30 M HEAD	

FIRE EXTINGUISHER

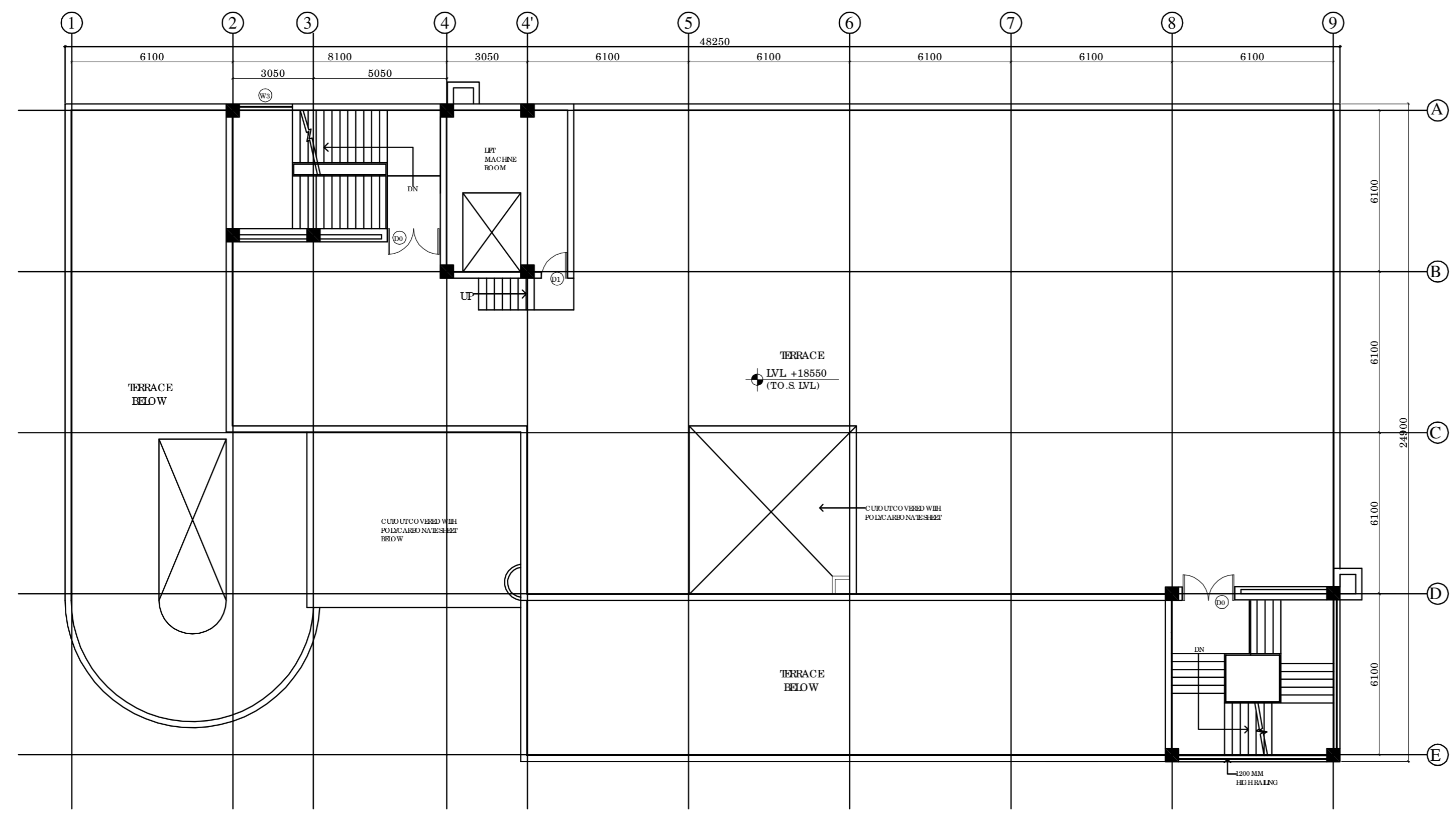
1.	ABC DRY POWDER TYPE FIRE EXTINGUISHER	
2.	CARBON DIOXIDE GAS TYPE FIRE EXTINGUISHER	
3.	WATER TYPE FIRE EXTINGUISHER	
4.	MANUAL CALL BOX	

NOTES ON FIRE FIGHTING

- Every FHC shall be consisting of as per IS 15000 following.
 - 63mm dia. single headed Hydrant Valve.
 - 2nos. 63mm dia. 15mts long RRL Hose reel.
 - 20mm dia 36.5mt first aid hose reel with 5mm bore nozzle.
 - 63mm dia. male and female INST type coupling.
 - 20mm dia branch pipe with 20mm nozzle.
 - 2 NOS FIRE EXTINGUISHERS

LEGEND FOR VERTICAL PIPE

- ① 150Ø MS FIRE RISER
- ② SPRI NKLER RISER
- ③ 50Ø SPRI NKLER DRAIN PIPE



TERRACE PLAN

REVISION

NO.	DESCRIPTION

PROJECT

NRHM PROJECT
 Proposed 100 Bedded Hospital at Mandi Town, HP

TITLE
 FIRE-TENDER DRAWING

TERRACE PLAN

HSC C/ MANDI TOWN/ HOSPITAL/ FF-09/ R-0

Drawing No.

Job No. Scale 1:100 Date 11-07-2014

App by Rev. by Prep. by

This drawing and its contents is the sole intellectual property of the Hospital Services Consulting Corporation (HSCC) Ltd. Copying of this drawing or part thereof for use in any form whatsoever without the written permission of HSCC is prohibited.

NOTES
 1. ALL DIMENSIONS ON THIS DRAWING ARE IN MM.
 2. ONLY WRITTEN DIMENSIONS ARE TO BE FOLLOWED. DRAWINGS SHOULD NOT BE SCALED UNDER ANY CIRCUMSTANCES.

LEGEND:

S. NO	DESCRIPTION	SYMBOL
1.	FIRE HOSE CABINET	
2.	FIRE PIPE LINE 150Ø	
3.	AIR RELEASE VALVE	
4.	NON-RETURN VALVE	
5.	SLUCE VALVE	
6.	COLD WATER SUPPLY LINE	
7.	FIRE HOSE REEL	
8.	LANDING VALVE	
9.	TERRACE FIRE PUMP 450 LPM 30 M HEAD	

FIRE EXTINGUISHER

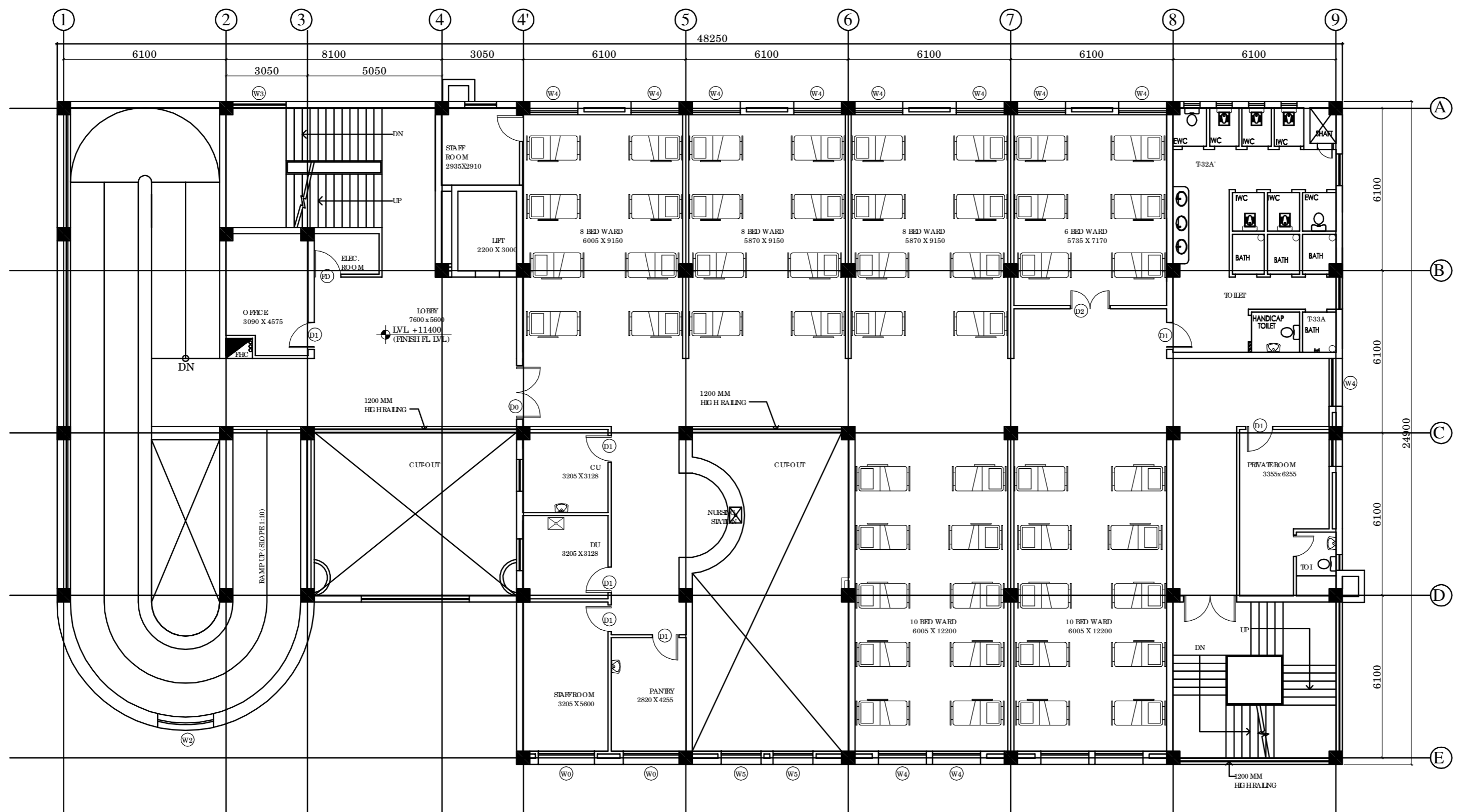
1.	ABC DRY POWDER TYPE FIRE EXTINGUISHER	
2.	CARBON DIOXIDE GAS TYPE FIRE EXTINGUISHER	
3.	WATER TYPE FIRE EXTINGUISHER	
4.	MANUAL CALL BOX	

NOTES ON FIRE FIGHTING

- Every FHC shall be consisting of as per IS following.
 - 63mm dia. single headed Hydrant Valve.
 - 2nos. 63mm dia. 15mts long RRL Hose reel.
 - 20mm dia 36.5mt first aid hose reel with nozzle.
 - 63mm dia. male and female INST type coupling.
 - 20mm dia branch pipe with 20mm nozzle.
 - 2 NOS FIRE EXTINGUISHERS

LEGEND FOR VERTICAL PIPE

- ① 150Ø MS FIRE RISER
- ② SPRINKLER RISER
- ③ 50Ø SPRINKLER DRAIN PIPE



THIRD FLOOR PLAN - 50 BEDS

REVISION

NO.	DESCRIPTION

PROJECT

NRHM PROJECT

Proposed 100 Bedded Hospital at Mandi Town, HP

TITLE

FIRE-TENDER DRAWING

THIRD FLOOR PLAN
 COVERED AREA - 1006.92 SQM

HSCC/MANDI/TD/HOSP/FF-07/R-0

Drawing No.

Job No. 1:100 Scale 11-07-2014 Date

App by Rev. by Prep. by

PRODUCED BY AN AUTODESK EDUCATIONAL PRODUCT

PRODUCED BY AN AUTODESK EDUCATIONAL PRODUCT

This drawing with all its contents is the sole intellectual property of the Hospital Services Consultancy Corporation (India) Ltd. Copying of this drawing or part thereof or its use in any form whatsoever without the written permission of HSCC is prohibited.

- NOTES**
1. ALL DIMENSIONS ON THIS DRAWING ARE IN MM.
 2. ONLY WRITTEN DIMENSIONS ARE TO BE FOLLOWED. DRAWINGS SHOULD NOT BE SCALED UNDER ANY CIRCUMSTANCES.

REVISION

PROJECT
 NRHM PROJECT
 Proposed 100 Bedded Hospital at Mandi Town, HP

TITLE
 TENDER DRAWING

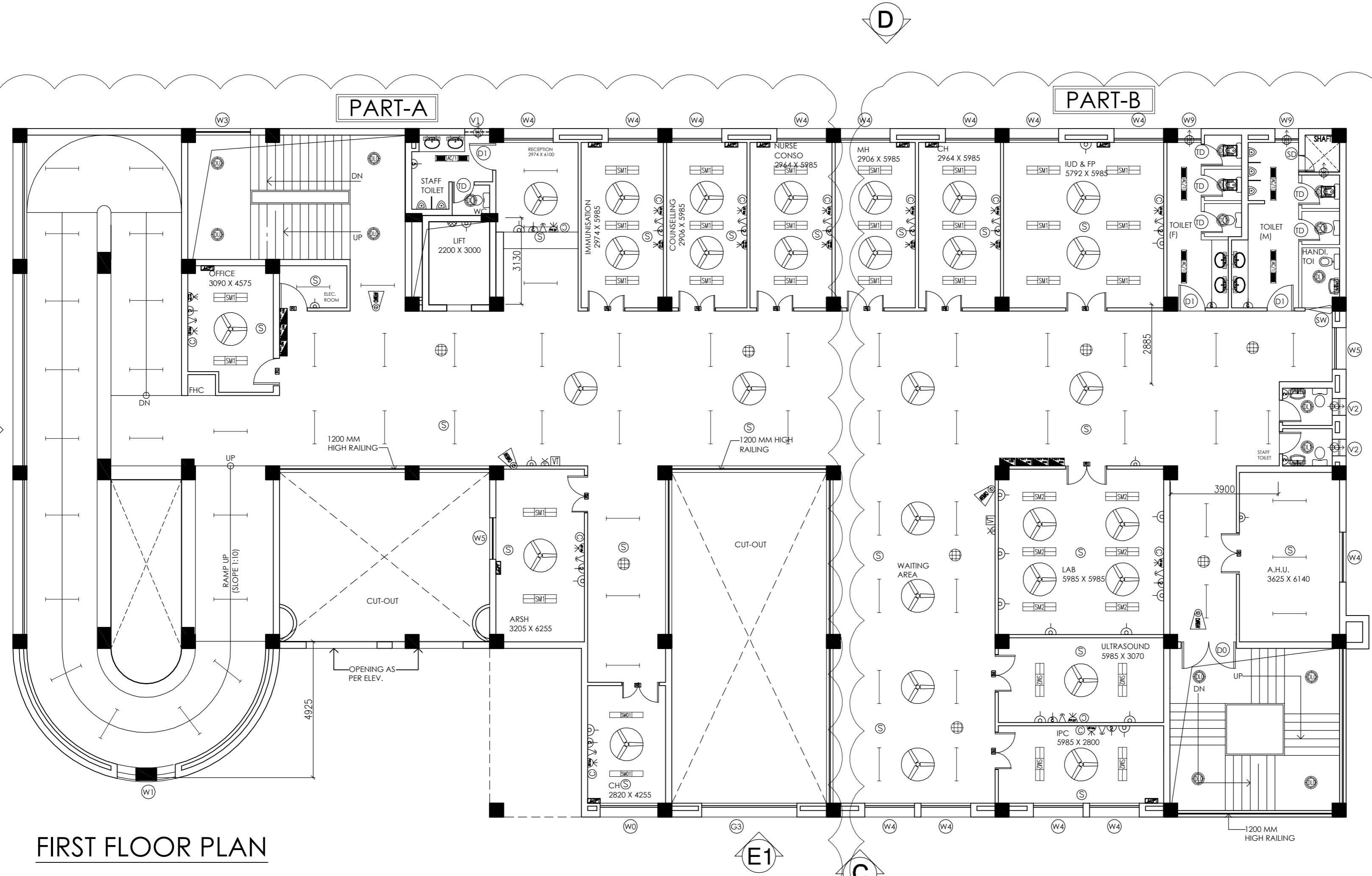
FIRST FLOOR PLAN
 COVERED AREA - 986.42 SQM

ELECTRICAL LAYOUT

HSCC/D&E/MANDI/TD/HOSP/EL-04
 Drawing No.

Job No.	NTS Scale	Date
App by	Rev. by	Prep. by

HSCC (INDIA) LIMITED
 (A GOVERNMENT OF INDIA ENTERPRISE)
HSCC
 NEW DELHI INDIA



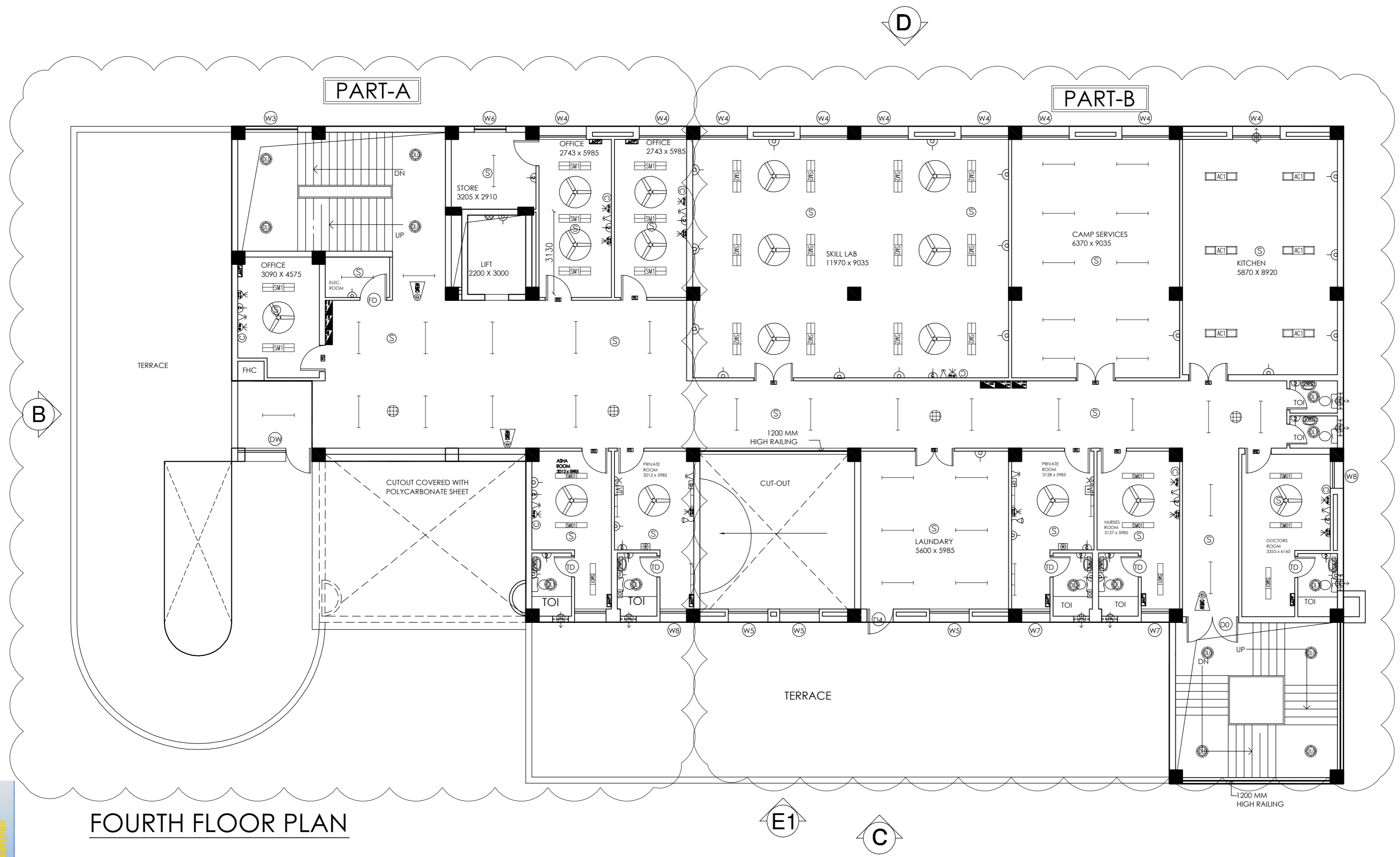
FIRST FLOOR PLAN

Your complimentary use period has ended. Thank you for using PDF Complete. Click Here to Upgrade to Unlimited Pages and Expanded Features

This drawing with all its contents is the sole intellectual property of the Hospital Services Consultancy Corporation (India) Ltd. Copying of this drawing or part thereof or its use in any form whatsoever without the written permission of HSCC is prohibited.

NOTES

1. ALL DIMENSIONS ON THIS DRAWING ARE IN MM.
2. ONLY WRITTEN DIMENSIONS ARE TO BE FOLLOWED. DRAWINGS SHOULD NOT BE SCALED UNDER ANY CIRCUMSTANCES.



FOURTH FLOOR PLAN

REVISION

--	--	--

PROJECT
NRHM PROJECT

Proposed 100 Bedded Hospital at Mandi Town, HP

TITLE
TENDER DRAWING
FOURTH FLOOR PLAN
COVERED AREA - 723.64 SQM

ELECTRICAL LAYOUT
HSCC/D&E/MANDI/TD/HOSP/EL-07
Drawing No.

Job No.	NTS Scale	Date
App by	Rev. by	Prep. by

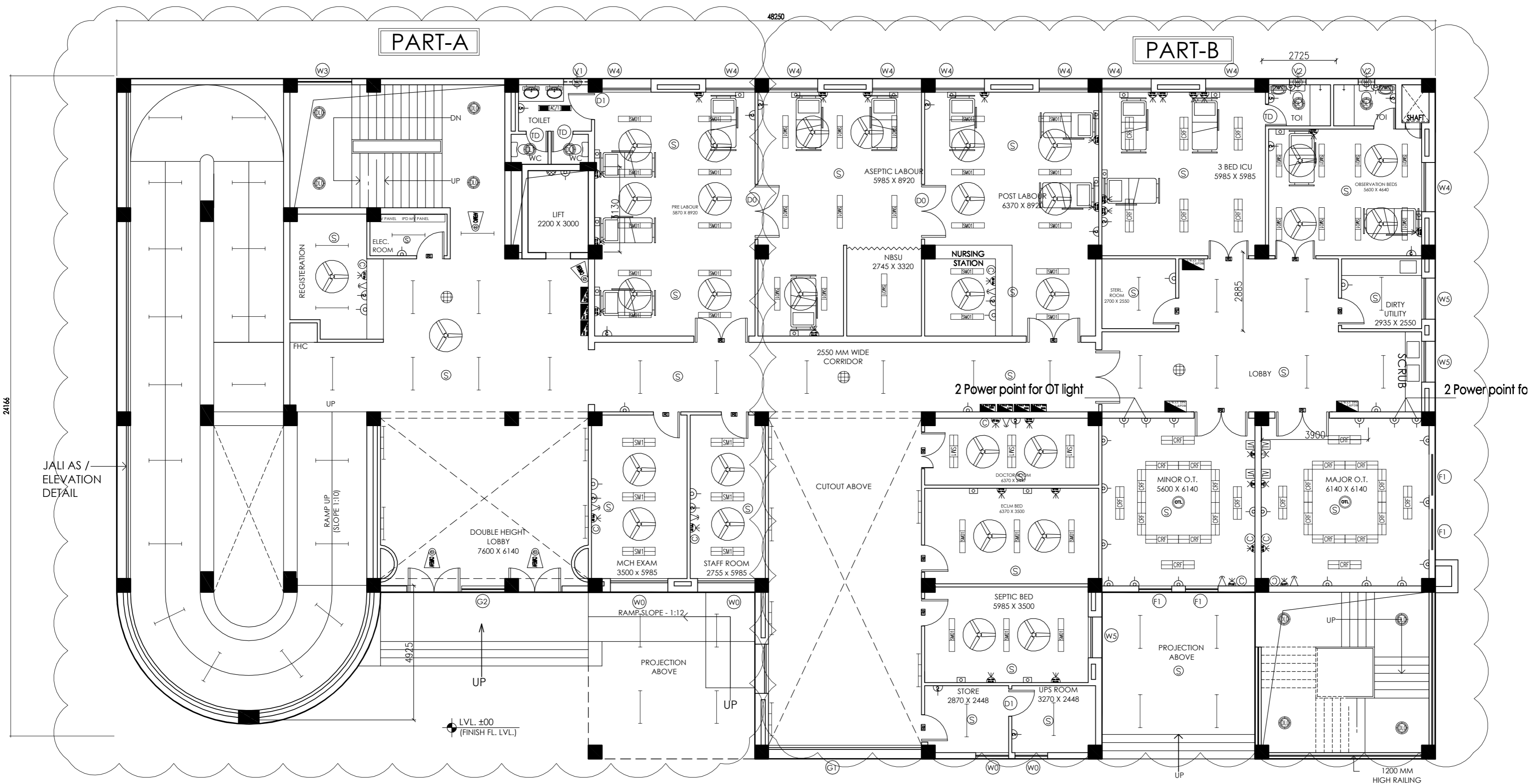
HSCC (INDIA) LIMITED
(A GOVERNMENT OF INDIA ENTERPRISES)
HSCC
NEW DELHI INDIA

Your complimentary use period has ended. Thank you for using PDF Complete. Click Here to Upgrade to Unlimited Pages and Expanded Features

This drawing with all its contents is the sole intellectual property of the Hospital Services Consultancy Corporation (India) Ltd. Copying of this drawing or part thereof or its use in any form whatsoever without the written permission of HSCC is prohibited.

NOTES

1. ALL DIMENSIONS ON THIS DRAWING ARE IN MM.
2. ONLY WRITTEN DIMENSIONS ARE TO BE FOLLOWED. DRAWINGS SHOULD NOT BE SCALED UNDER ANY CIRCUMSTANCES.



GROUND FLOOR PLAN



REVISION

--	--	--

PROJECT
NRHM PROJECT

Proposed 100 Bedded Hospital at Mandi Town, HP

TITLE
TENDER DRAWING

GROUND FLOOR PLAN
COVERED AREA - 1062 SQM

ELECTRICAL LAYOUT
HSCC/D&E/MANDI/TD/HOSP/EL-03
Drawing No.

Job No.	NTS Scale	Date
App by	Rev. by	Prep. by

HSCC (INDIA) LIMITED
(A GOVERNMENT OF INDIA ENTERPRISES)
HSCC
NEW DELHI INDIA