

GROUND FLOOR AREA PLAN
DETAIL OF GROUND FLOOR AREA=
 A= 24.30x11.27 =273.86 Sqm.
 Covd. Area On Ground Floor =
 = 273.86 Sqm.

This drawing with all its contents is the sole intellectual property of the Hospital Services Consultancy Corporation (India) Ltd. Copying of this drawing or part thereof or its use in any form whatsoever without the written permission of HSCC is prohibited.

NOTES

| SCHEDULE OF OPENINGS | | | |
|----------------------|------|-------------|------------------------------------|
| S.NO | TYPE | SIZE | CILL LINTEL REMARKS |
| 1. | GD | 1500 X 2400 | 000 2400 Partly Fixed/ Center Open |
| 2. | RS | 3500 X 3000 | 000 3000 |
| 3. | WI | 2000 X 1500 | 900 2400 Opening Only |
| 4. | W | 1600 X 1500 | 900 2400 Opening Only |
| 5. | LV | 2200 X 750 | 3150 3900 HEIGHT AS/ELEVATION |
| 6. | VI | 1500 X 750 | 3150 3900 HEIGHT AS/ELEVATION |

| REV | DATE | DESCRIPTION |
|----------|------|-------------|
| REVISION | | |

PROJECT
 National Institute of Malaria Research (NIMR) at Dwarka, DELHI

TITLE
 TENDER DRAWING
 AC-Plant Room

Floor Plans,Elevations, Sections,Area chart

HSCC/263/006/MD/ACPT/042/R
 Drawing No.

| | | |
|---------------------|----------------|----------------|
| HSCC/263 Job No. | 1:100 Scale | Sep'14 Date |
| App by | Rev. by | Prep. by |

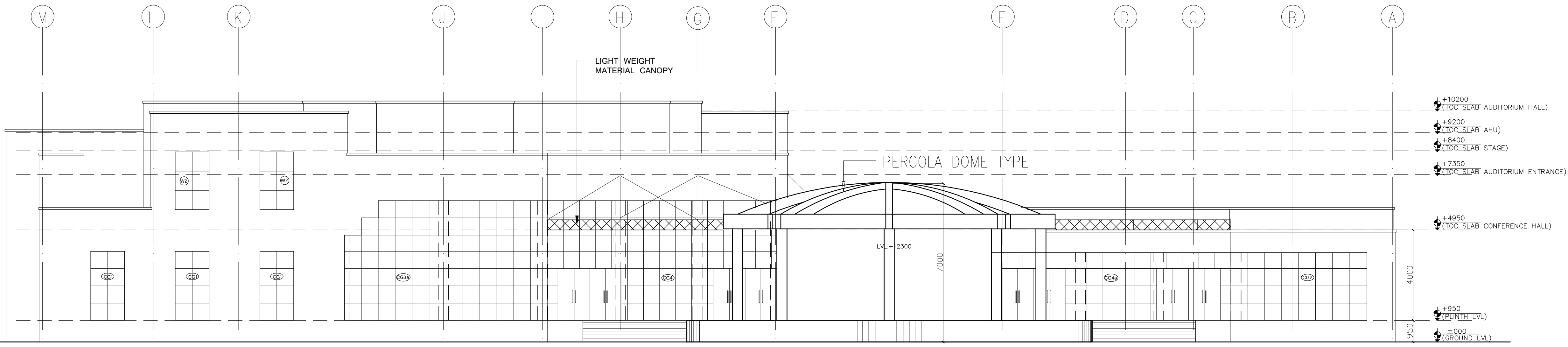
HSCC (INDIA) LIMITED
 (A GOVERNMENT OF INDIA ENTERPRISES)

HSCC
 NEW DELHI INDIA

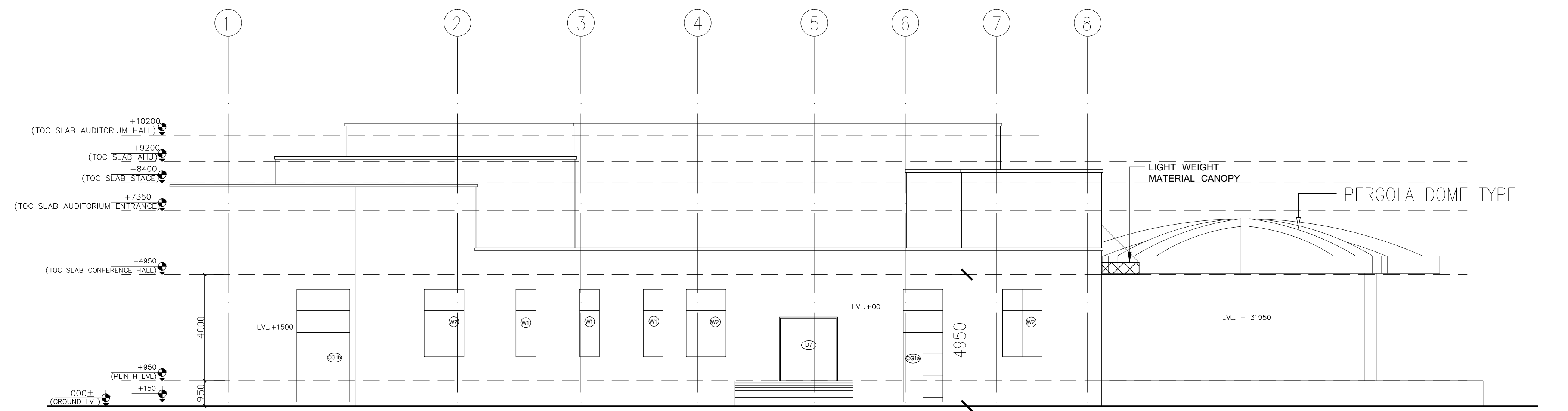
This drawing with all its contents is the sole intellectual property of the Hospital Services Consultancy Corporation (India) Ltd. Copying of this drawing or part thereof or its use in any form whatsoever without the written permission of HSCC is prohibited.

NOTES

| SCHEDULE OF OPENINGS | | | | | |
|----------------------|------|--------------|----------|------------|------------------------|
| S.NO | NAME | SIZE | CELL LVL | LINTEL LVL | REMARK |
| 1 | B1 | 750 x 2100 | 0.00 | 2100 | |
| 2 | B2 | 900 x 2100 | 0.00 | 2100 | |
| 3 | B3 | 1000 x 2100 | 0.00 | 2100 | |
| 4 | B4 | 1500 x 2400 | 0.00 | 2400 | |
| 5 | B5 | 1800 x 2400 | 0.00 | 2400 | |
| 6 | B6 | 2000 x 2400 | 0.00 | 2400 | |
| 7 | B7 | 2200 x 2400 | 0.00 | 2400 | |
| 8 | W1 | 750 x 2500 | 900 | 3400 | |
| 9 | W2 | 1500 x 2500 | 900 | 3400 | |
| 10 | V1 | 750 x 900 | 2500 | 3400 | |
| 11 | V2 | 900 x 900 | 2500 | 3400 | |
| 12 | CG1 | 1500 x 2950 | - | - | |
| 13 | CG1a | 1500 x 4200 | - | - | Door opening 2000x2200 |
| 14 | CG1b | 2000 x 4200 | - | - | Door opening 2000x2200 |
| 15 | CG2 | 6600 x 2950 | - | - | |
| 16 | CG3 | 8985 x 5300 | - | - | Door opening 2000x2200 |
| 17 | CG3a | 8985 x 5300 | - | - | |
| 18 | CG3b | 8985 x 2950 | - | - | Door opening 2000x2200 |
| 19 | CG4 | 15000 x 5300 | - | - | Door opening 2000x2200 |
| 20 | CG4a | 15000 x 2950 | - | - | Door opening 2000x2200 |
| 21 | B3a | 1000 x 2100 | 0.00 | 2100 | |



FRONT ELEVATION -A



SIDE ELEVATION -B

| REV | DATE | DESCRIPTION |
|----------|------|-------------|
| REVISION | | |

PROJECT
National Institute of Malaria Research (NIMR) at Dwarka, DELHI

TITLE
TENDER DRAWING
Auditorium & Conference Hall

Elevations

HSCC/263/006/SD/Audi/005/R1
Drawing No.

| | | |
|---------------------|----------------|--------------------|
| HSCC/263 Job No. | 1:100 Scale | 18/09/2015 Date |
|---------------------|----------------|--------------------|

| | | |
|--------|---------|----------|
| App by | Rev. by | Prep. by |
|--------|---------|----------|

HSCC (INDIA) LIMITED
(A GOVERNMENT OF INDIA ENTERPRISES)
HSCC
NEW DELHI INDIA

This drawing with all its contents is the sole intellectual property of the Hospital Services Consultancy Corporation (India) Ltd. Copying of this drawing or part thereof or its use in any form whatsoever without the written permission of HSCC is prohibited.

NOTES

| SCHEDULE OF OPENINGS | | | | | |
|----------------------|------|--------------|----------|------------|------------------------|
| S.NO | NAME | SIZE | CELL LVL | LINTEL LVL | REMARK |
| 1 | D1 | 750 x 2100 | 0.00 | 2100 | |
| 2 | D2 | 900 x 2100 | 0.00 | 2100 | |
| 3 | D3 | 1000 x 2100 | 0.00 | 2100 | |
| 4 | D4 | 1500 x 2400 | 0.00 | 2400 | |
| 5 | D5 | 1800 x 2400 | 0.00 | 2400 | |
| 6 | D6 | 2000 x 2400 | 0.00 | 2400 | |
| 7 | D7 | 2200 x 2400 | 0.00 | 2400 | |
| 8 | W1 | 750 x 2500 | 900 | 3400 | |
| 9 | W2 | 1500 x 2500 | 900 | 3400 | |
| 10 | V1 | 750 x 900 | 2500 | 3400 | |
| 11 | V2 | 900 x 900 | 2500 | 3400 | |
| 12 | CG1 | 1500 x 2950 | - | - | |
| 13 | CG1a | 1500 x 4200 | - | - | Door opening 2000x2200 |
| 14 | CG1b | 2000 x 4200 | - | - | Door opening 2000x2200 |
| 15 | CG2 | 6600 x 2950 | - | - | |
| 16 | CG3 | 8985 x 5300 | - | - | Door opening 2000x2200 |
| 17 | CG3a | 8985 x 5300 | - | - | Door opening 2000x2200 |
| 18 | CG3b | 8985 x 2950 | - | - | Door opening 2000x2200 |
| 19 | CG4 | 15000 x 5300 | - | - | Door opening 2000x2200 |
| 20 | CG4a | 15000 x 2950 | - | - | Door opening 2000x2200 |
| 21 | D3a | 1000 x 2100 | 0.00 | 2100 | |

| REV | DATE | DESCRIPTION |
|----------|------|-------------|
| REVISION | | |
| | | |
| | | |

PROJECT
National Institute of Malaria Research (NIMR) at Dwarka, DELHI

TITLE
TENDER DRAWING
Auditorium & Conference Hall

First Floor Plan

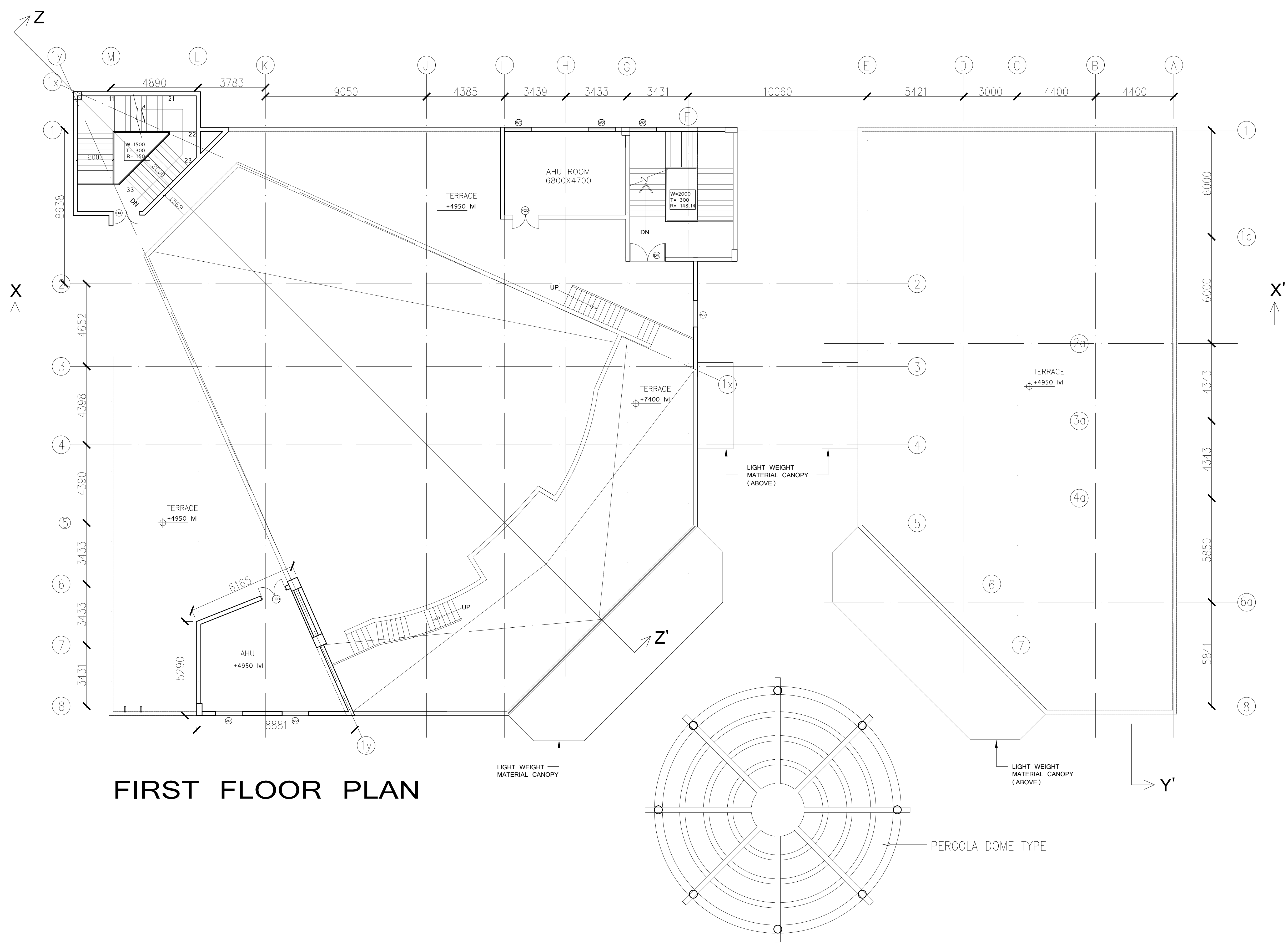
HSCC/263/006/SD/Audi/003/R1
Drawing No.

| | | |
|---------------------|----------------|--------------------|
| HSCC/263 Job No. | 1:100 Scale | 18/09/2015 Date |
|---------------------|----------------|--------------------|

| | | |
|--------|---------|----------|
| App by | Rev. by | Prep. by |
|--------|---------|----------|

HSCC (INDIA) LIMITED
(A GOVERNMENT OF INDIA ENTERPRISES)

HSCC
NEW DELHI INDIA



FIRST FLOOR PLAN