

This drawing with all its contents is the sole intellectual property of the Hospital Services Consultancy Corporation (India) Ltd. Copying of this drawing or part thereof or its use in any form whatsoever without the written permission of HSCC is prohibited.

- NOTES**
1. DRAWINGS TO BE READ NOT MEASURED
 2. PARTITION WALL IN TOILETS UP TO LINTEL HEIGHT



GROUND FLOOR

REVISION - 01
 REVISED AS PER THE GUIDELINES OF VETTING COMMITTEE

PROJECT
 PROPOSED
 100 BEDDED HOSPITAL
 JAUNPUR

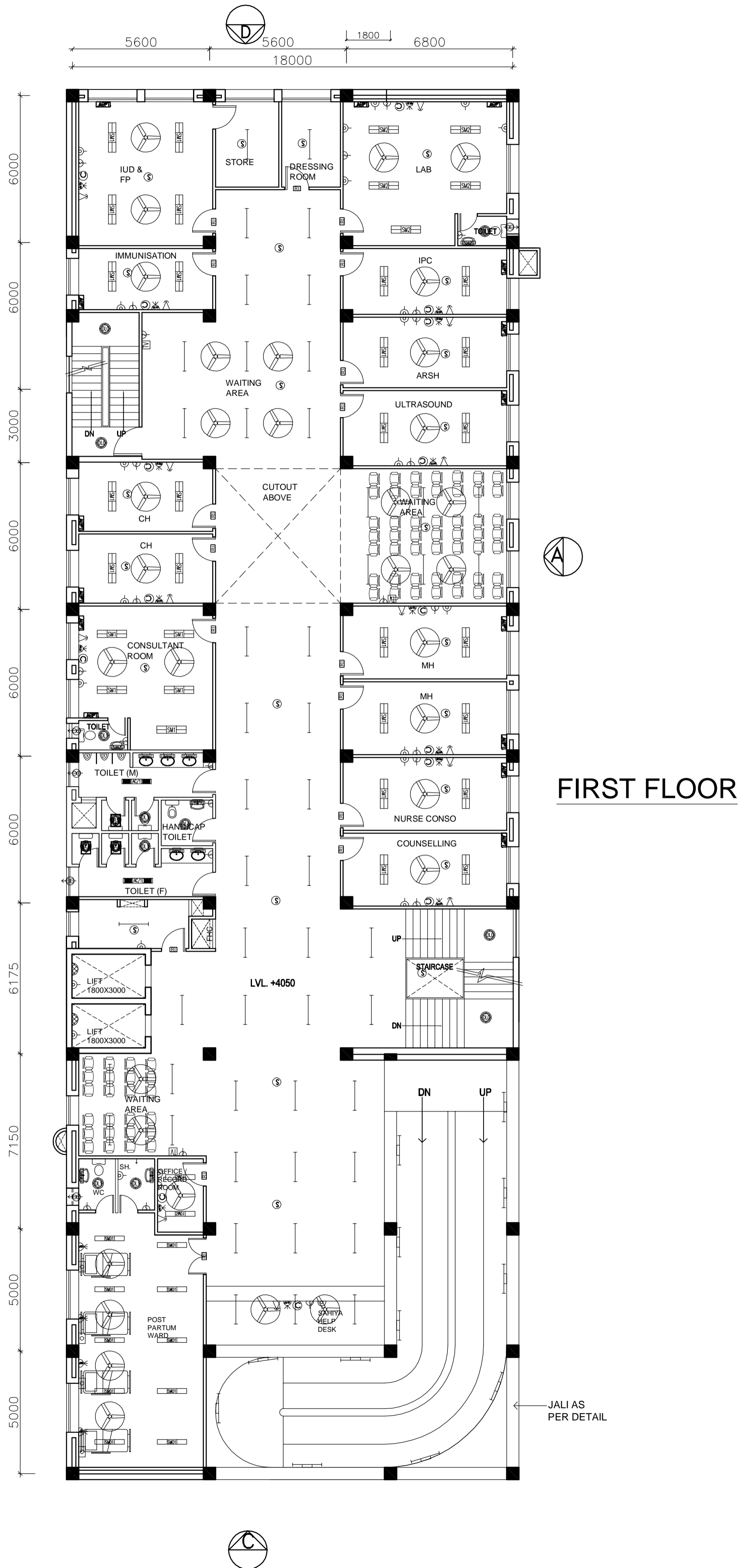
TITLE
 TENDER DRAWING
 GROUND FLOOR PLAN
 AREA - 1051.26 SQM
 (ELECTRICAL LAYOUT)

Drawing No. - HSCC/TD/JAUNPUR/EL-301
 Rev. -

Job No.	NTS Scale	Date
App by	Rev. by	Prep. by

This drawing with all its contents is the sole intellectual property of the Hospital Services Consultancy Corporation (India) Ltd. Copying of this drawing or part thereof or its use in any form whatsoever without the written permission of HSCC is prohibited.

- NOTES**
- DRAWINGS TO BE READ NOT MEASURED
 - PARTITION WALL IN TOILETS UP TO LINTEL HEIGHT



FIRST FLOOR

REVISION - 01
 REVISED AS PER THE GUIDELINES OF VETTING COMMITTEE

PROJECT
 PROPOSED
 100 BEDDED HOSPITAL
 JAUNPUR

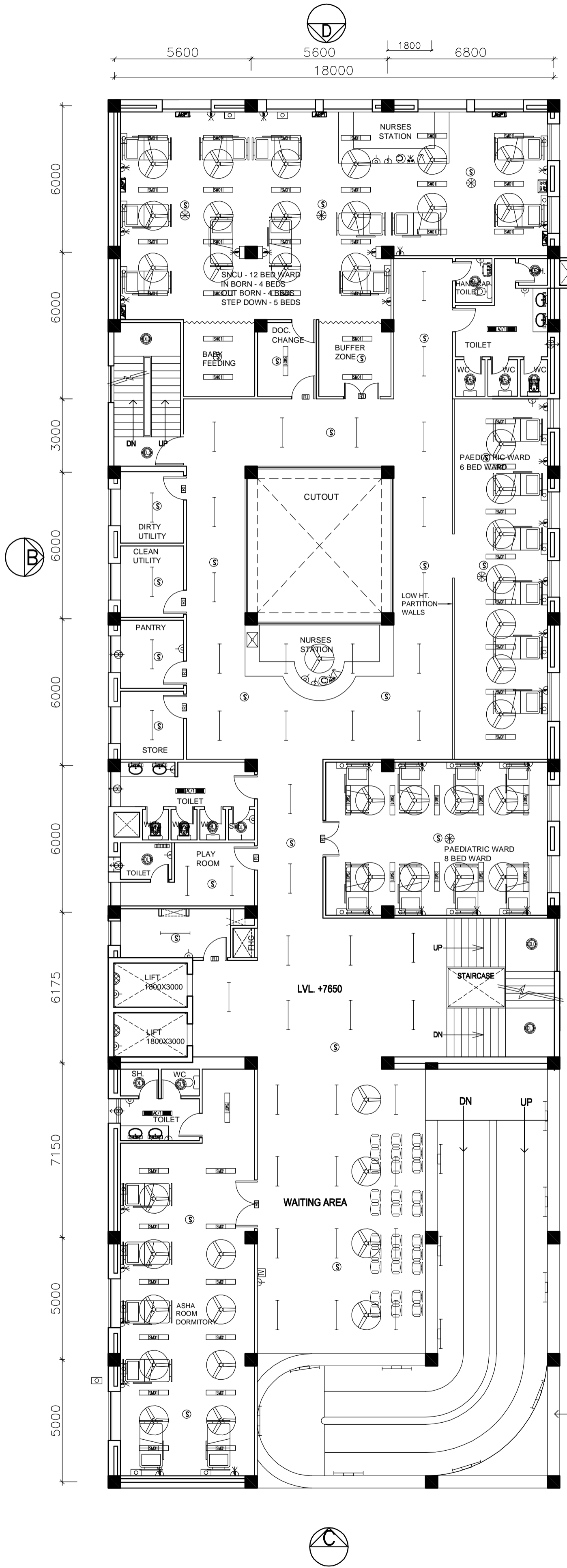
TITLE
 TENDER DRAWING
 FIRST FLOOR PLAN
 AREA - 1051.26 SQM
 (ELECTRICAL LAYOUT)

Drawing No. - HSCC/TD/JAUNPUR/EL-302
 Rev. -

Job No.	NTS Scale	Date
App by	Rev. by	Prep. by

This drawing with all its contents is the sole intellectual property of the Hospital Services Consultancy Corporation (India) Ltd. Copying of this drawing or part thereof or its use in any form whatsoever without the written permission of HSCC is prohibited.

- NOTES**
1. DRAWINGS TO BE READ NOT MEASURED
 2. PARTITION WALL IN TOILETS UP TO LINTEL HEIGHT



**2ND FLOOR -
 PAEDIATRIC CARE**
 14 BEDS - PAEDIATRIC,
 12 BEDS - SNCU
 ASHA ROOM DORMITORY - 6 BEDS

PRODUCED BY AN AUTODESK EDUCATIONAL PRODUCT

REVISION - 01
 REVISED AS PER THE GUIDELINES OF VETTING COMMITTEE

PROJECT
 PROPOSED
 100 BEDDED HOSPITAL
 JAUNPUR

TITLE
 TENDER DRAWING
 SECOND FLOOR PLAN
 AREA - 1051.26 SQM

(ELECTRICAL LAYOUT)

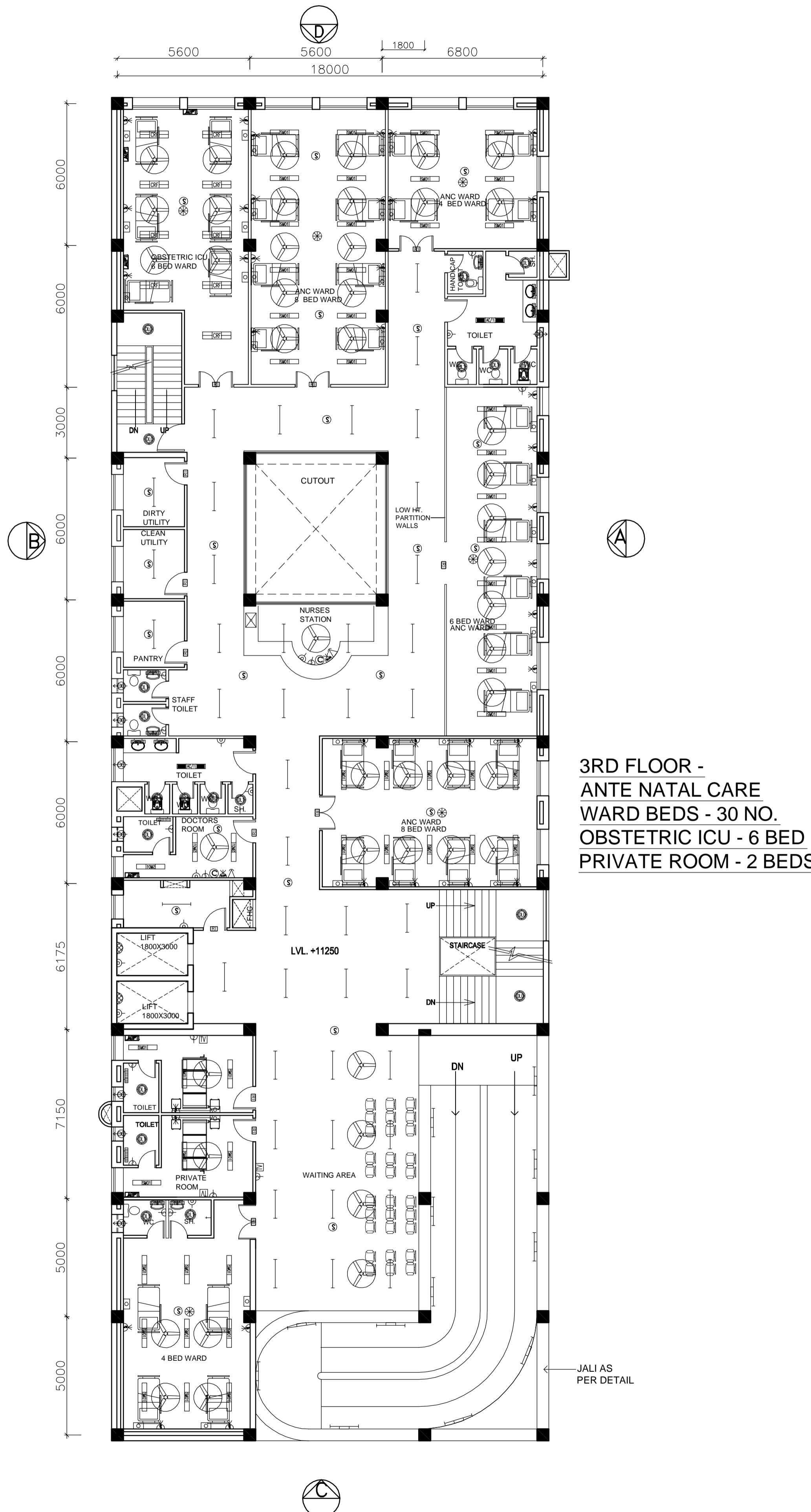
Drawing No. - HSCC/TD/JAUNPUR/EL-303

Job No.	NTS Scale	Date
App by	Rev. by	Prep. by

This drawing with all its contents is the sole intellectual property of the Hospital Services Consultancy Corporation (India) Ltd. Copying of this drawing or part thereof or its use in any form whatsoever without the written permission of HSCC is prohibited.

NOTES

1. DRAWINGS TO BE READ NOT MEASURED
2. PARTITION WALL IN TOILETS UP TO LINTEL HEIGHT



3RD FLOOR -
ANTE NATAL CARE
WARD BEDS - 30 NO.
OBSTETRIC ICU - 6 BED
PRIVATE ROOM - 2 BEDS

REVISION - 01
 REVISED AS PER THE GUIDELINES OF VETTING COMMITTEE

PROJECT

PROPOSED
 100 BEDDED HOSPITAL
 JAUNPUR

TITLE

TENDER DRAWING

THIRD FLOOR PLAN
 AREA - 1051.26 SQM

(ELECTRICAL LAYOUT)

Drawing No. - HSCC/TD/JAUNPUR/EL-304

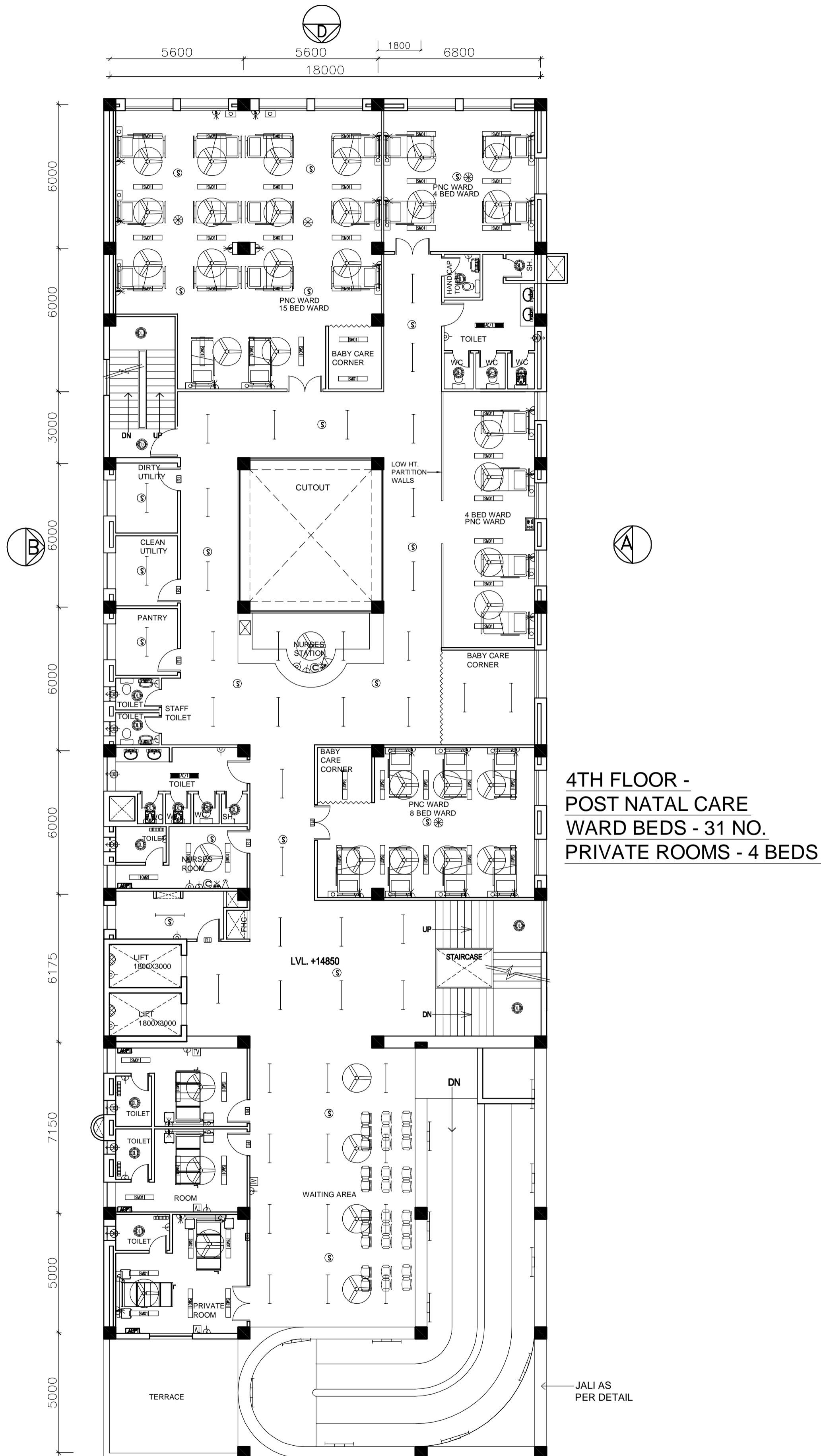
Rev. -

Job No.	NTS Scale	Date
App by	Rev. by	Prep. by

This drawing with all its contents is the sole intellectual property of the Hospital Services Consultancy Corporation (India) Ltd. Copying of this drawing or part thereof or its use in any form whatsoever without the written permission of HSCC is prohibited.

NOTES

1. DRAWINGS TO BE READ NOT MEASURED
2. PARTITION WALL IN TOILETS UP TO LINTEL HEIGHT



**4TH FLOOR -
POST NATAL CARE
WARD BEDS - 31 NO.
PRIVATE ROOMS - 4 BEDS**

REVISION - 01
REVISED AS PER THE GUIDELINES OF VETTING COMMITTEE

PROJECT
PROPOSED
100 BEDDED HOSPITAL
JAUNPUR

TITLE
TENDER DRAWING
FOURTH FLOOR PLAN
AREA - 898 SQM
(ELECTRICAL LAYOUT)

Drawing No. - HSCC/TD/JAUNPUR/EL-305
Rev. -

Job No.	NTS Scale	Date
App by	Rev. by	Prep. by