

**CHHATTISGARH MEDICAL SERVICES CORPORATION
LIMITED**

(Government of Chhattisgarh)

Tender

For

**Construction of District Drug Warehouse at Jashpur (C.G.),
under National Rural Health Mission scheme**

Tender Drawings

VOLUME-VI

October' 2014

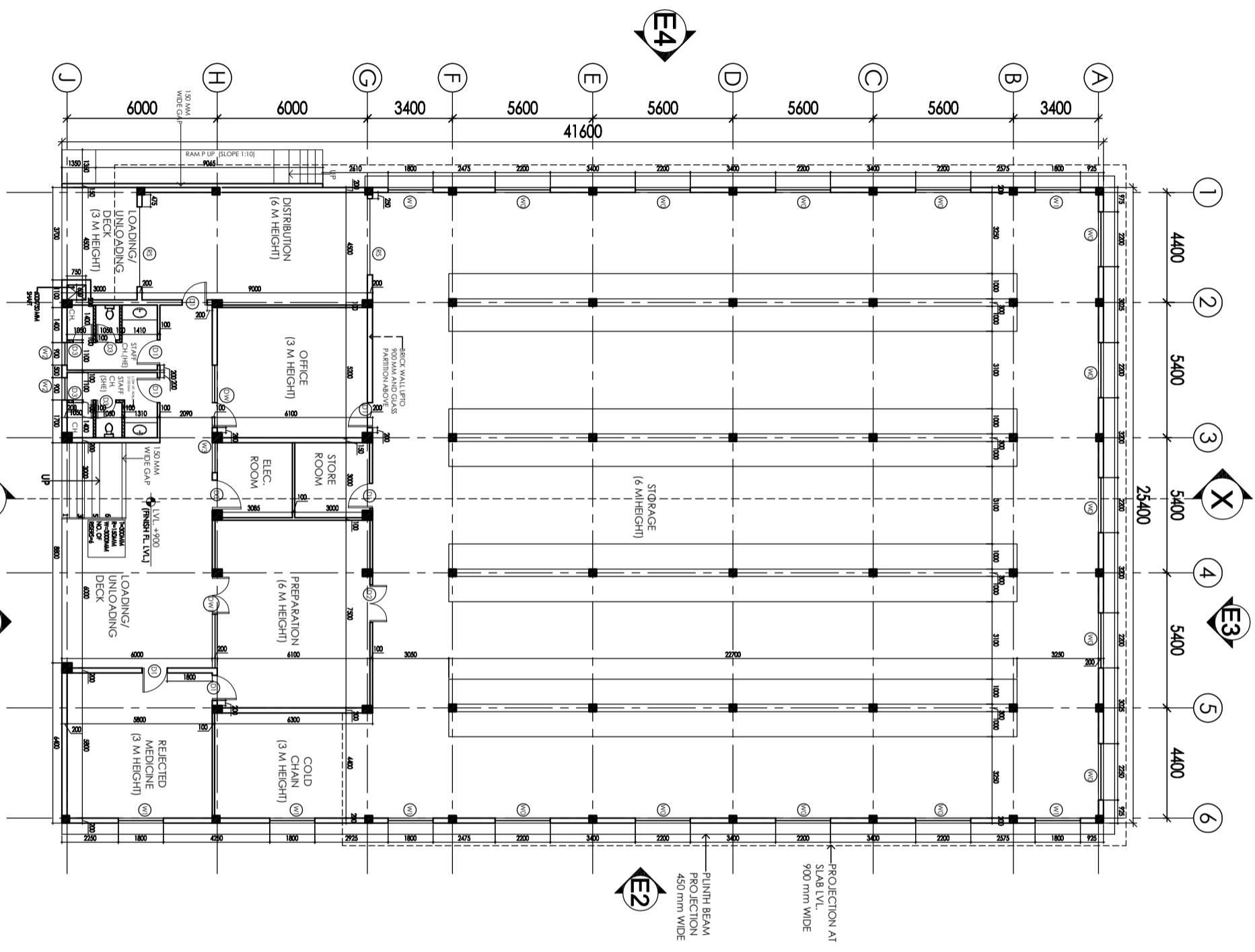


**HSCC (INDIA) LTD.
(CONSULTANTS & ENGINEERS FOR MEGA HOSPITALS & LABORATORIES)
E-6(A), sector-1, NOIDA(U.P) 201301 (India)**

Phone : 0120-2542436-40

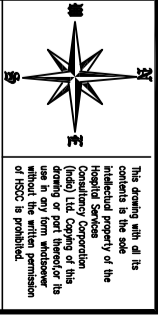
Fax : 0120-2542447

Tender No. HSCC/NRHM/CG/2014 (VI) /11



GROUND FLOOR PLAN

AREA = 1052.48 SQMT.

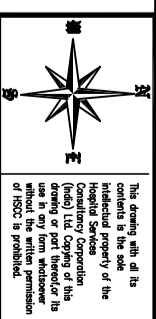


NOTES
 1. DRAWING APPROVED BY CGMS OFFICIALS ON 28-12-2013 AND THE COMMENTS GIVEN HAVE BEEN INCORPORATED IN THESE DRAWINGS.

S.NO.	TYPE	WIDTH	C/CL	INTER.
1	D0	1200	—	2150
2	D1	1000	—	2150
3	D2	1500	—	2150
4	D3	800	—	2150
5	DW	2500	300	2150
6	DW1	2400	300	2150
7	W0	2200	900	(BEAM BOTTOM)
8	W1	1800	900	(BEAM BOTTOM)
9	W1A	1800	1350	(BEAM BOTTOM)
10	W2	900	900	(BEAM BOTTOM)
11	W2A	900	1350	(BEAM BOTTOM)
12	W3	1200	300	(BEAM BOTTOM)
13	W4	1500	1350	(BEAM BOTTOM)
14	W5	1200	900	2150
14	V0	400	2000	(BEAM BOTTOM)
14	RS	3000	900	(BEAM BOTTOM)

REVISION	
PROJECT	Proposed District Drug Warehouse of CHATTISGARH (Area 1053 Sq. M.)
TITLE	ARCHITECTURAL CONCEPT DRAWING GROUND FLOOR PLAN
HSCC/EV210/CD/Tender/001/R-1	
Drawing No.	
HSCC/RT210	1:100
Job No.	Scale
	06-03-2014
	Date
App by	SS
Rev. by	LK
Prep. by	

HSCC (INDIA) LIMITED
 (A GOVERNMENT OF INDIA ENTERPRISE)
HSCC
 NEW DELHI
 INDIA



This drawing, with all its contents is the sole intellectual property of the Hospital Services Corporation (HSCC) Ltd. Copying of this drawing or part thereof for use in any form without the written permission of HSCC is prohibited.

NOTES

1. DRAWING APPROVED BY CGMS OFFICIALS ON 28-12-2013 AND THE COMMENTS GIVEN HAVE BEEN INCORPORATED IN THESE DRAWINGS.

S.NO.	TYPE	WIDTH	C/CL	LINE#
1	D0	1200	—	2150
2	D1	1000	—	2150
3	D2	1500	—	2150
4	D3	800	—	2150
5	DW	2500	300	2150
6	DW1	2400	300	2150
7	W0	2200	900	(BEAM SECTION)
8	W1	1800	900	(BEAM SECTION)
9	W1A	1800	1350	(BEAM SECTION)
10	W2	900	900	(BEAM SECTION)
11	W2A	900	1350	(BEAM SECTION)
12	W3	1200	300	(BEAM SECTION)
13	W4	1500	1350	(BEAM SECTION)
14	W5	1200	900	2150
14	V0	400	2000	(BEAM SECTION)
14	RS	3000	900	(BEAM SECTION)

REVISION

PROJECT

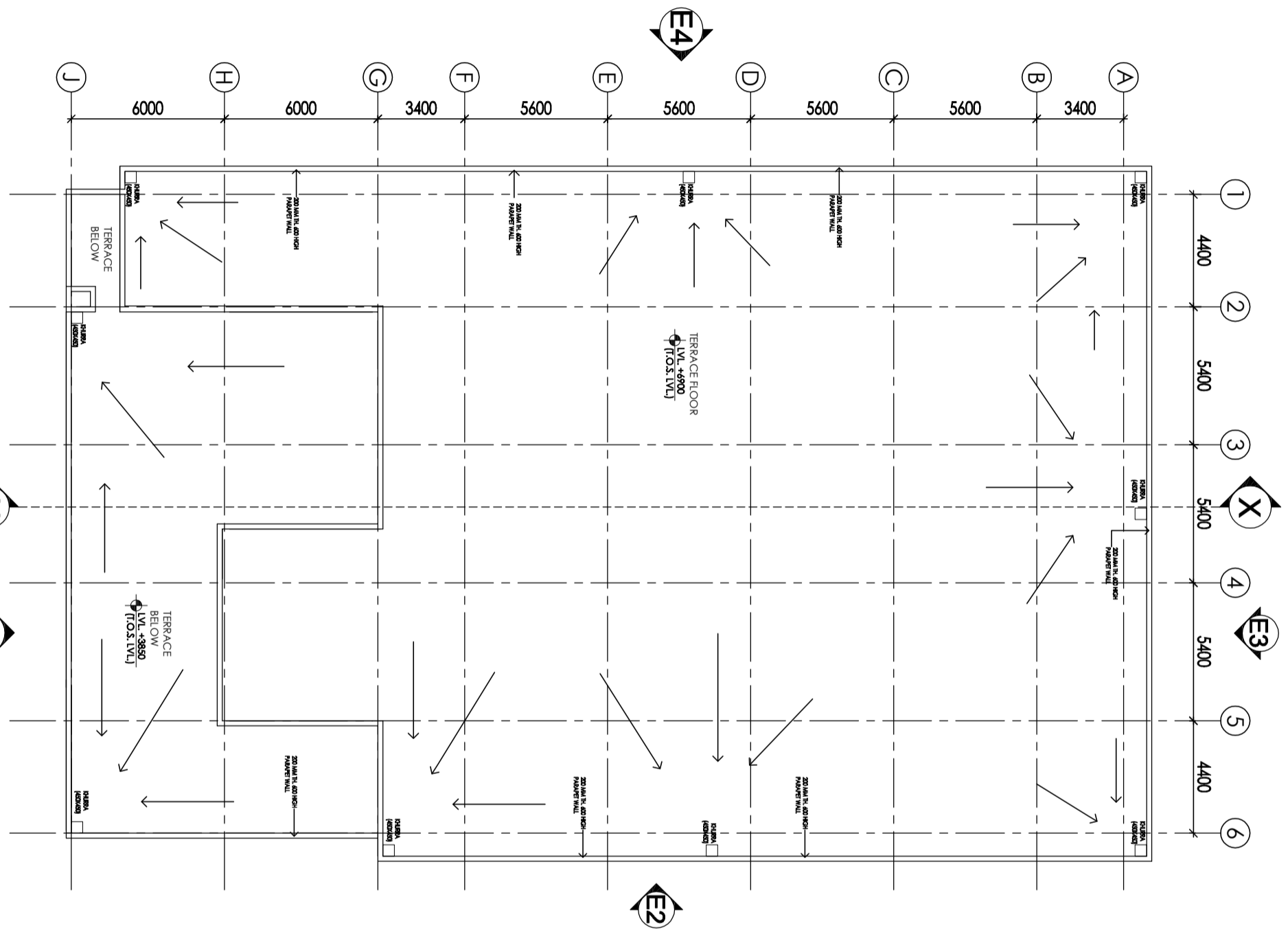
Proposed District Drug Warehouse of CHATTISGARH

TITLE

ARCHITECTURAL CONCEPT DRAWING
TERRACE PLAN

HSCC/EV210/CDV/Tender/002/R-1

Drawing No.	HSCC/RT210	Scale	1:100	Date	05-03-2014
App by	SS	Rev. by	LK	Prep. by	



TERRACE PLAN

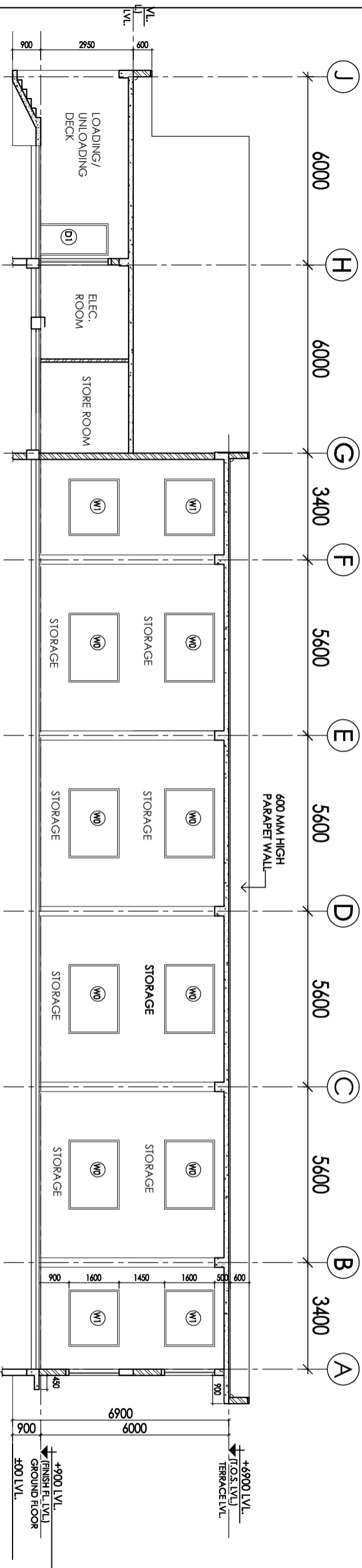


This drawing, with all its contents is the sole intellectual property of the Hospital Services Corporation (HSCC) and its use in any form without the written permission of HSCC is prohibited.

NOTES

1. DRAWING APPROVED BY CGMS OFFICIALS ON 28-12-2013 AND THE COMMENTS GIVEN HAVE BEEN INCORPORATED IN THESE DRAWINGS.

S.NO.	TYPE	WIDTH	C/L	LINE#
1	D0	1200	—	2150
2	D1	1000	—	2150
3	D2	1500	—	2150
4	D3	800	—	2150
5	DW	2500	300	2150
6	DW	2400	300	2150
7	W0	2200	800	BEAM BOTTOM
8	W1	1800	800	BEAM BOTTOM
9	W1A	1800	1350	BEAM BOTTOM
10	W2	900	800	BEAM BOTTOM
11	W2A	900	1350	BEAM BOTTOM
12	W3	1200	300	BEAM BOTTOM
13	W4	1500	1350	BEAM BOTTOM
14	W5	1200	800	2150
14	W0	400	2000	BEAM BOTTOM
14	W5	3000	800	BEAM BOTTOM



SECTION XX

TITLE
ARCHITECTURAL
CONCEPT DRAWING
SECTION XX

Drawing No. HSCC/EV210/CDV/Tender/003/R-1

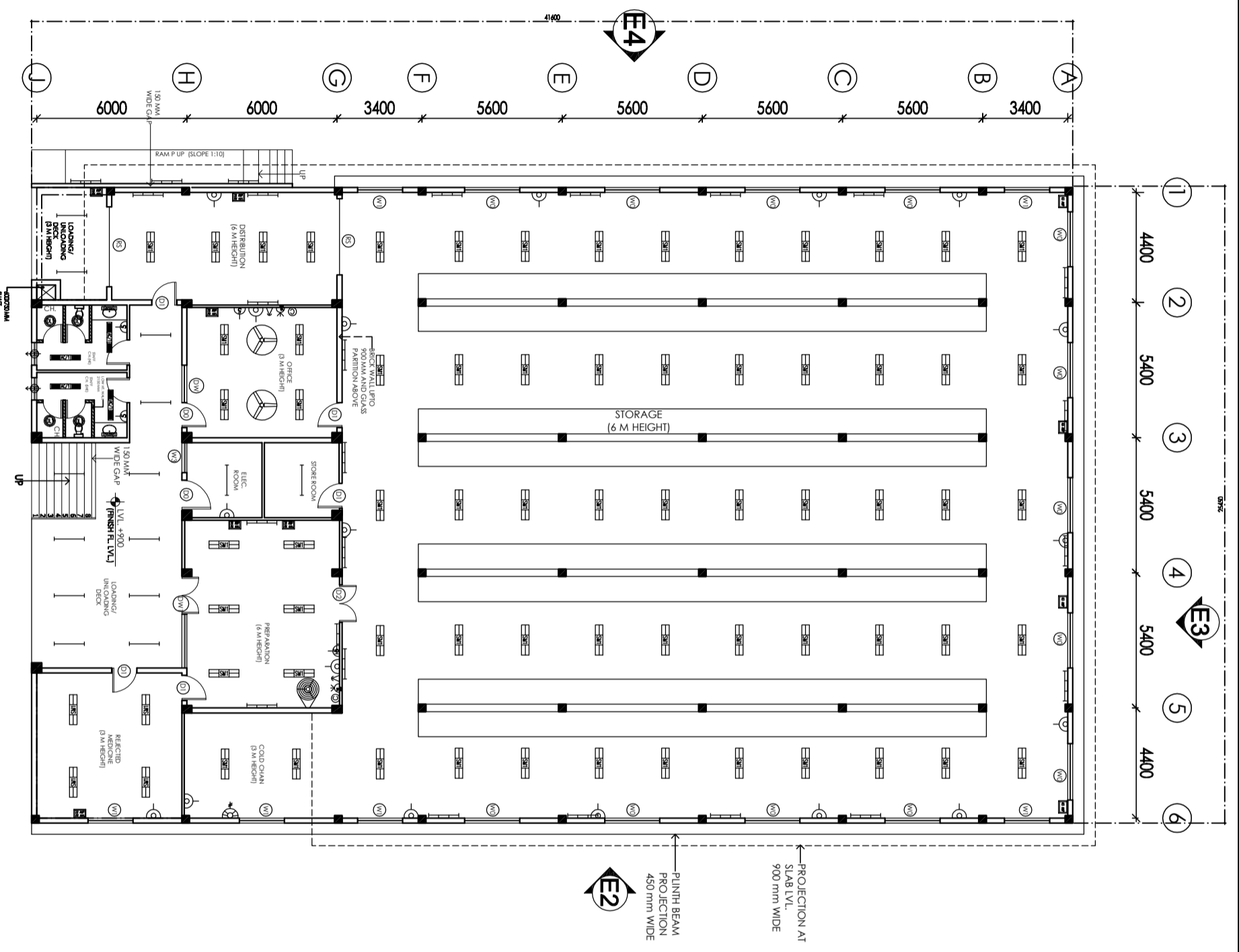
HSCC/RT210
Job No. Scale 1:100
Date 05-03-2014

App. by S.S. Rev. by L.K. Prep. by

PROJECT
Proposed
District Drug
Warehouse
at CHATTISGARH

REVISION

HSCC (INDIA) LIMITED
(A GOVERNMENT OF INDIA ENTERPRISE)
HSCC
NEW DELHI INDIA



GROUND FLOOR PLAN
AREA = 1052.48 SQ.MT.

This drawing, with all its contents is the sole intellectual property of the Hospital Services Corporation (India) Ltd. Copying or reuse of this drawing or part thereof for any purpose without the written permission of HSCC is prohibited.

NOTES
 1. DRAWING APPROVED BY CGMS OFFICIALS ON 28-12-2013 AND THE COMMENTS GIVEN HAVE BEEN INCORPORATED IN THESE DRAWINGS.

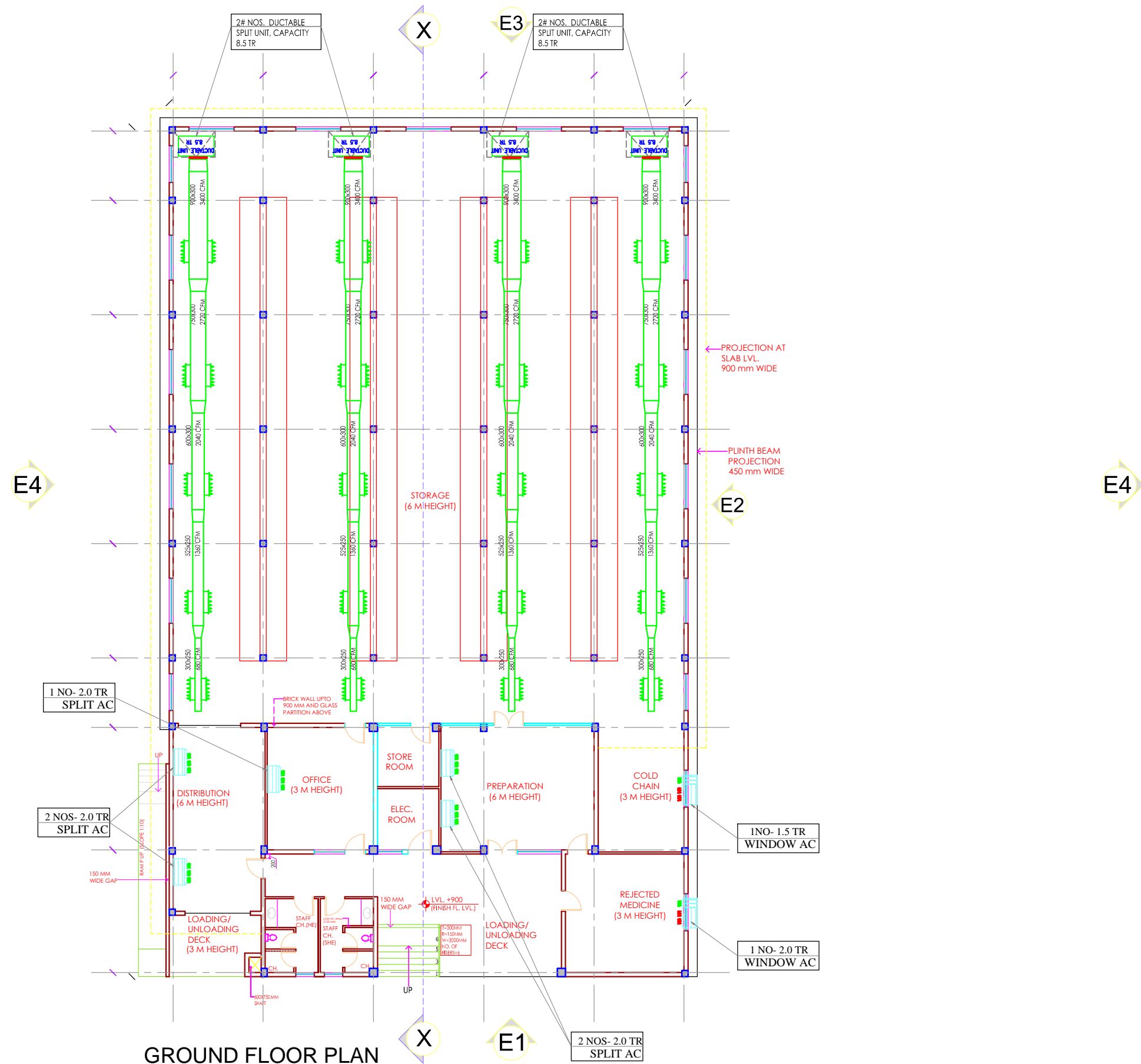
REVISION	DATE	BY

PROJECT
 Proposed Drug Warehouse of CHATTISGARH (Area 1053 Sq. M.)

TITLE
 TENDER DRAWING
 GROUND FLOOR PLAN
 ELECTRICAL LAYOUT

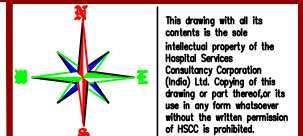
HSCC/EV210/TD/D.W./EL-201		
Drawing No.	HSCC/RT210	
Job No.	Scale	Date
App by	Rev. by	Prep. by

HSCC (INDIA) LIMITED
 (A GOVERNMENT OF INDIA ENTERPRISE)
HSCC
 NEW DELHI
 INDIA



GROUND FLOOR PLAN

AREA = 1052.48 SQMT.



NOTES
 1. DRAWING APPROVED BY CGMS OFFICIALS ON 28-12-2013 AND THE COMMENTS GIVEN HAVE BEEN INCORPORATED IN THESE DRAWINGS.

S.NO.	TYPE	WIDTH	CALL	LINTEL
1	D0	1200	---	2150
2	D1	1000	---	2150
3	D2	1500	---	2150
4	D3	800	---	2150
5	DW	2500	300	2150
6	DW1	2400	300	2150
7	W0	2200	900	(BEAM BOTTOM)
8	W1	1800	900	(BEAM BOTTOM)
9	W1A	1800	1350	(BEAM BOTTOM)
10	W2	900	900	(BEAM BOTTOM)
11	W2A	900	1350	(BEAM BOTTOM)
12	W3	1200	300	(BEAM BOTTOM)
13	W4	1500	1350	(BEAM BOTTOM)
14	W5	1200	900	2150
14	V0	600	2000	(BEAM BOTTOM)
14	B5	3000	900	(BEAM BOTTOM)

REVISION	NO.	DESCRIPTION

PROJECT
 TITLE
 TENDER DRAWING
 Proposed
 Drug Warehouse at Durg, CHATISGARH (Area 1053 Sq. M.)

HVAC LAYOUT (SCHEME PURPOSE)

GROUND FLOOR PLAN

HSCC/D&E/HVAC/DDWH/CG/AC-01		
Drawing No.	HSCC/EV210	05-03-2014
Job No.	1:100	Date
App by	S.S	L.K
Rev. by		Prep. by

HSCC (INDIA) LIMITED
 (A GOVERNMENT OF INDIA ENTERPRISE)
HSCC
 NEW DELHI INDIA