

**CHHATTISGARH MEDICAL SERVICES CORPORATION  
LIMITED**

**(Government of Chhattisgarh)**

**Tender**

**For**

**Construction of District Drug Warehouse at Durg (C.G.), under  
National Rural Health Mission scheme**

**Tender Drawings**

**VOLUME-VI**

**October' 2014**

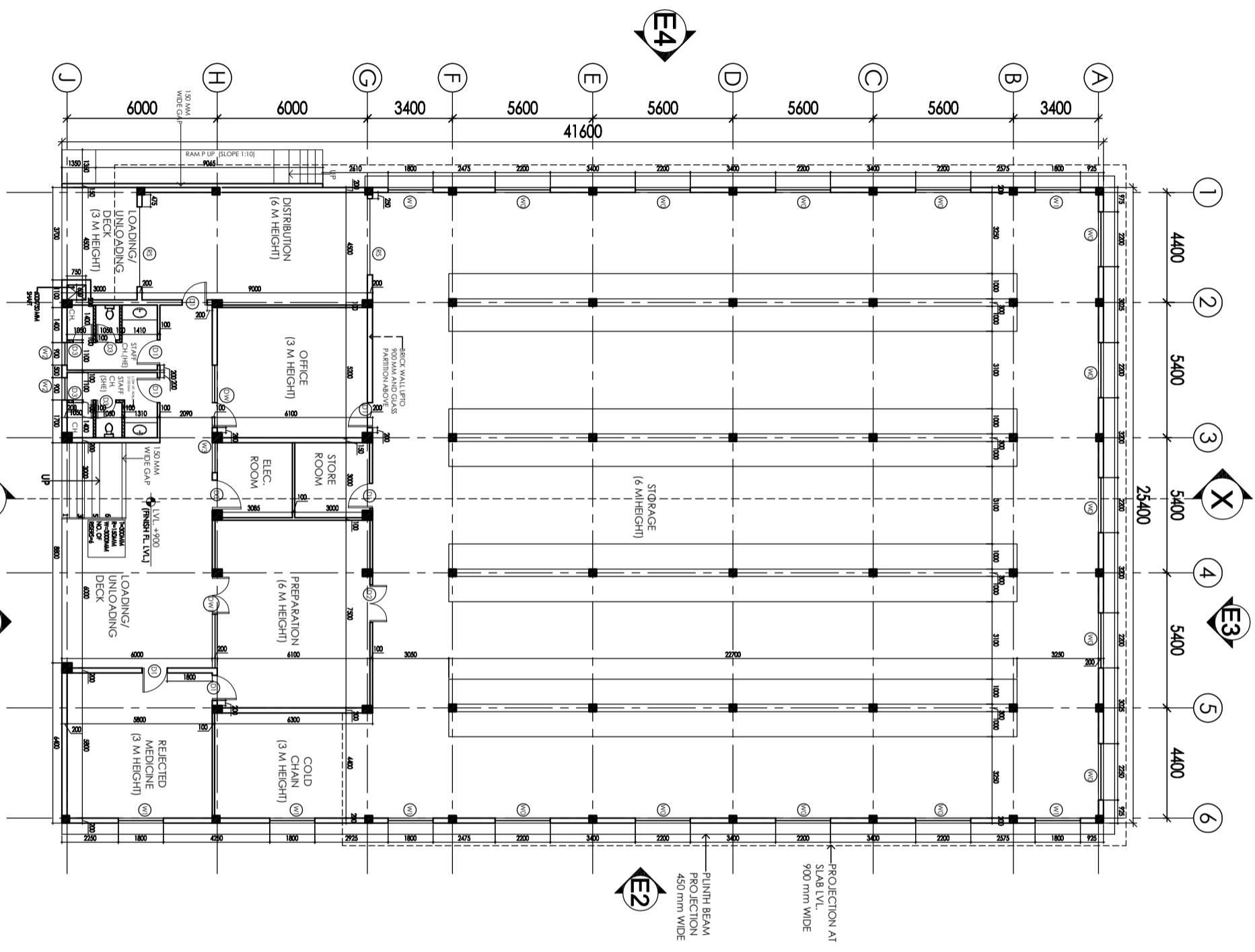


**HSCC (INDIA) LTD.  
(CONSULTANTS & ENGINEERS FOR MEGA HOSPITALS & LABORATORIES)  
E-6(A), sector-1, NOIDA(U.P) 201301 (India)**

Phone : 0120-2542436-40

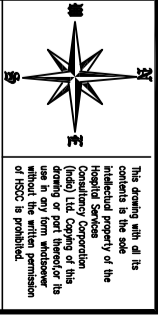
Fax : 0120-2542447

**Tender No. HSCC/NRHM/CG/2014 (VI) /01**



**GROUND FLOOR PLAN**

**AREA = 1052.48 SQMT.**

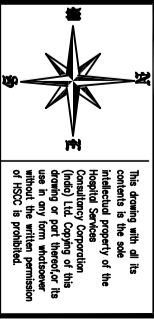


**NOTES**  
 1. DRAWING APPROVED BY CGMS OFFICIALS ON 28-12-2013 AND THE COMMENTS GIVEN HAVE BEEN INCORPORATED IN THESE DRAWINGS.

S.NO.	TYPE	WIDTH	C/CL	INTER.
1	D0	1200	—	2150
2	D1	1000	—	2150
3	D2	1500	—	2150
4	D3	800	—	2150
5	DW	2500	300	2150
6	DW	2400	300	2150
7	W0	2200	900	(BEAM BOTTOM)
8	W1	1800	900	(BEAM BOTTOM)
9	W1A	1800	1350	(BEAM BOTTOM)
10	W2	900	900	(BEAM BOTTOM)
11	W2A	900	1350	(BEAM BOTTOM)
12	W3	1200	300	(BEAM BOTTOM)
13	W4	1500	1350	(BEAM BOTTOM)
14	W5	1200	900	2150
14	W0	400	2000	(BEAM BOTTOM)
14	RS	3000	900	(BEAM BOTTOM)

<b>REVISION</b>	
<b>PROJECT</b>	
Proposed District Drug Warehouse of CHATTISGARH (Area 1053 Sq. M.)	
<b>TITLE</b>	
ARCHITECTURAL CONCEPT DRAWING	
GROUND FLOOR PLAN	
HSCC/EV210/CD/Tender/001/R-1	
Drawing No.	
HSCC/RT210	1:100
Job No.	Scale
	06-03-2014
	Date
App by	Rev. by
SS	LK
	Prep. by

HSCC (INDIA) LIMITED  
 (A GOVERNMENT OF INDIA ENTERPRISE)  
**HSCC**  
 NEW DELHI  
 INDIA



This drawing, with all its contents is the sole intellectual property of the Hospital Services Corporation (HSCC) Ltd. Copying of this drawing or part thereof for use in any form without the written permission of HSCC is prohibited.

**NOTES**

1. DRAWING APPROVED BY CGMS OFFICIALS ON 28-12-2013 AND THE COMMENTS GIVEN HAVE BEEN INCORPORATED IN THESE DRAWINGS.

S.NO.	TYPE	WIDTH	C/CL	LINE#
1	D0	1200	—	2150
2	D1	1000	—	2150
3	D2	1500	—	2150
4	D3	800	—	2150
5	DW	2500	300	2150
6	DW1	2400	300	2150
7	W0	2200	900	(BEAM BOTTOM)
8	W1	1800	900	(BEAM BOTTOM)
9	W1A	1800	1350	(BEAM BOTTOM)
10	W2	900	900	(BEAM BOTTOM)
11	W2A	900	1350	(BEAM BOTTOM)
12	W3	1200	300	(BEAM BOTTOM)
13	W4	1500	1350	(BEAM BOTTOM)
14	W5	1200	900	2150
14	V0	400	2000	(BEAM BOTTOM)
14	V5	3000	900	(BEAM BOTTOM)

**REVISION**


**PROJECT**

Proposed District Drug Warehouse of CHATTISGARH

**TITLE**

ARCHITECTURAL CONCEPT DRAWING  
TERRACE PLAN

HSCC/EV210/CDV/Tender/002/R-1

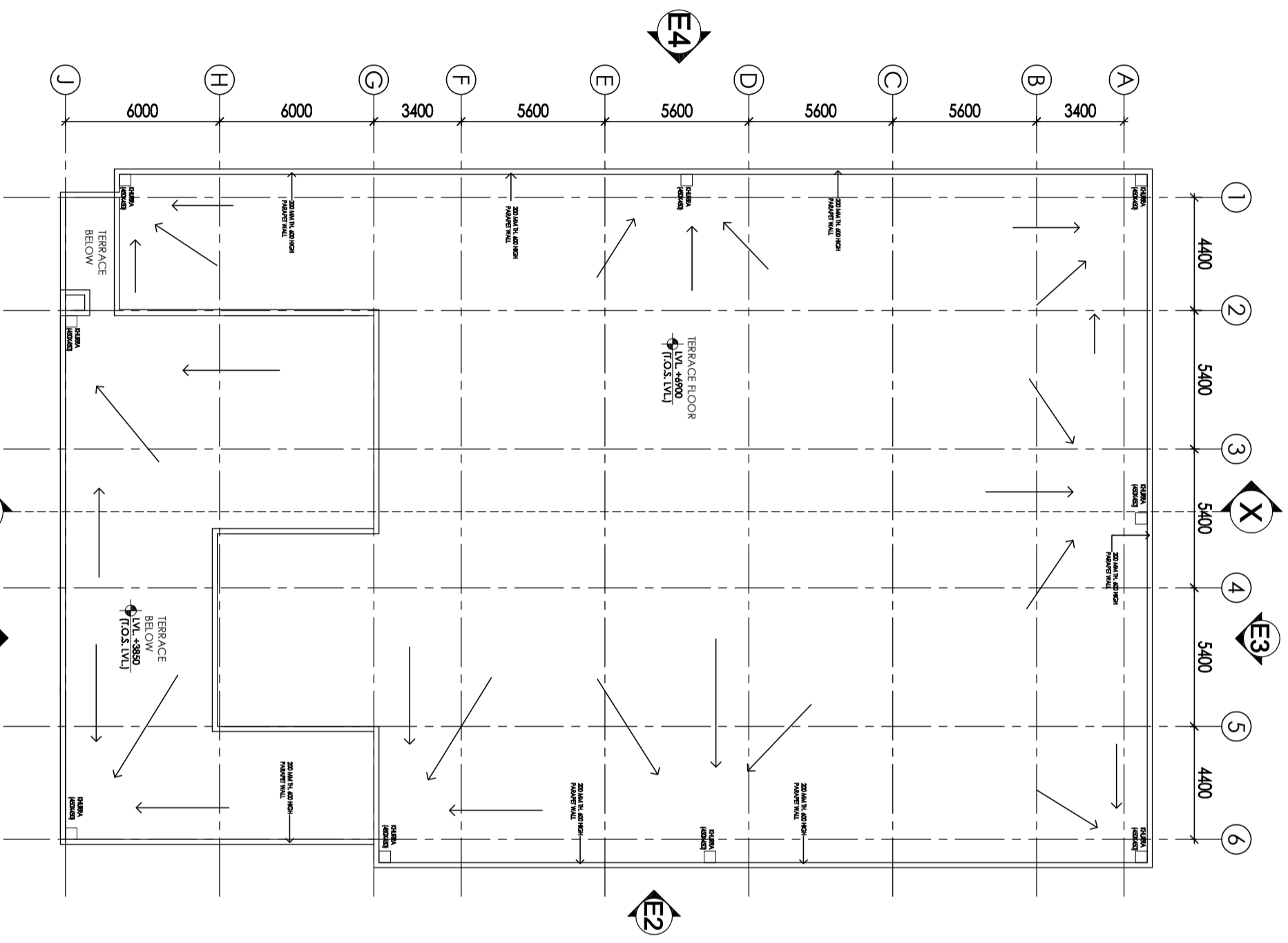
Drawing No.

HSCC/RT210 1:100 Scale 05-03-2014

Job No.

Doc#

App by: S S Rev. by: L K Prep. by:



**TERRACE PLAN**

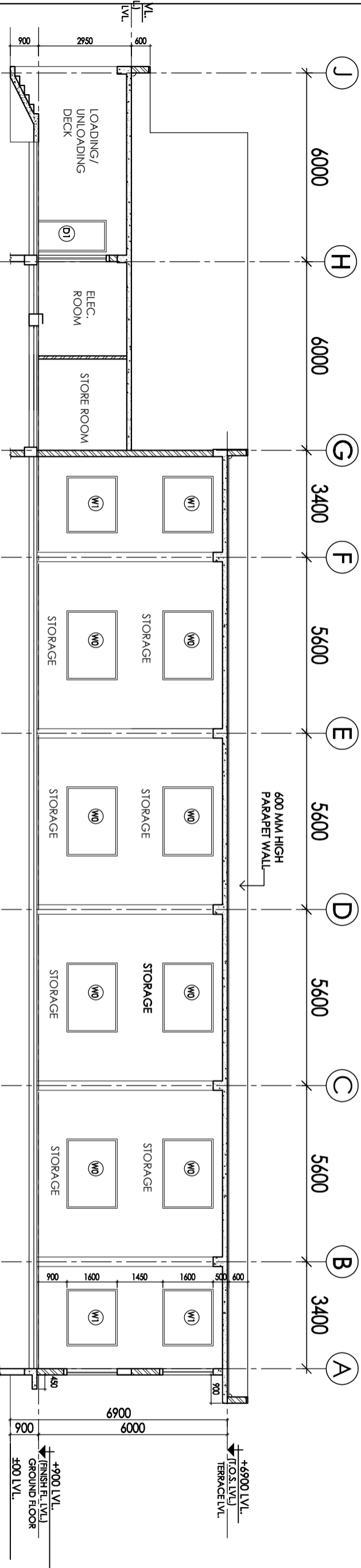


This drawing, with all its contents is the sole intellectual property of the Hospital Services Corporation (HSCC) and shall remain the property of HSCC. No part of this drawing or part hereof or its use in any form without the written permission of HSCC is prohibited.

**NOTES**

1. DRAWING APPROVED BY CGMS OFFICIALS ON 28-12-2013 AND THE COMMENTS GIVEN HAVE BEEN INCORPORATED IN THESE DRAWINGS.

S.NO.	TYPE	WIDTH	C/L	LINE#
1	D0	1200	—	2150
2	D1	1000	—	2150
3	D2	1500	—	2150
4	D3	800	—	2150
5	DW	2500	300	2150
6	DW1	2400	300	2150
7	W0	2200	800	BEAM BOTTOM
8	W1	1800	800	BEAM BOTTOM
9	W1A	1800	1350	BEAM BOTTOM
10	W2	900	800	BEAM BOTTOM
11	W2A	900	1350	BEAM BOTTOM
12	W3	1200	300	BEAM BOTTOM
13	W4	1500	1350	BEAM BOTTOM
14	W5	1200	800	2150
14	W0	400	2000	BEAM BOTTOM
14	W5	3000	800	BEAM BOTTOM



**SECTION XX**

**TITLE**  
**ARCHITECTURAL**  
**CONCEPT DRAWING**  
**SECTION XX**

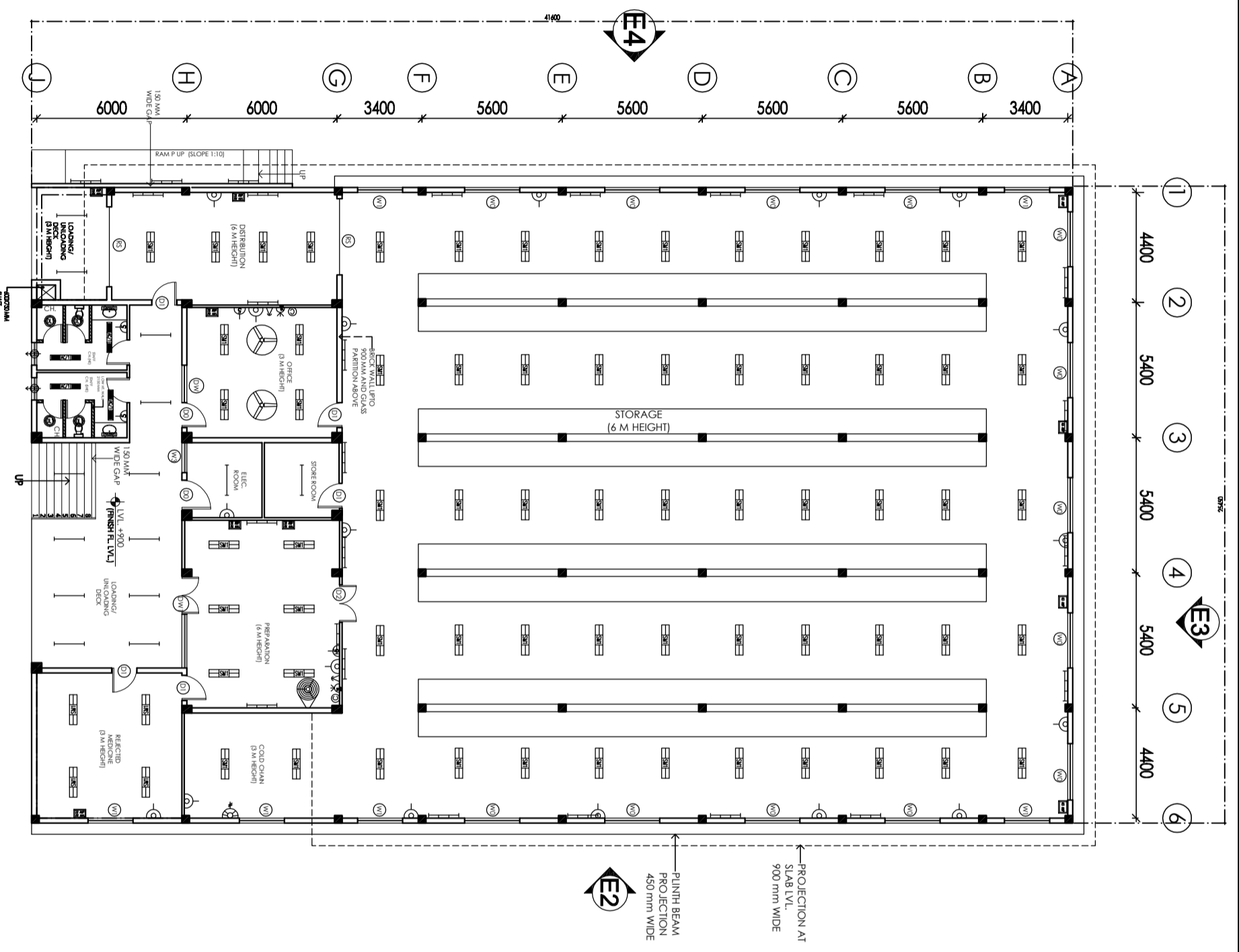
Drawing No. HSCC/EV210/CDV/Tender/003/R-1

HSCC/RT210  
 Job No. Scale 1:100  
 Date 05-03-2014

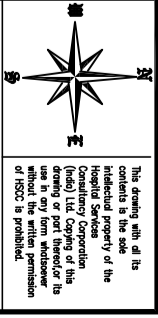
App. by S.S. Rev. by L.K. Prep. by

**PROJECT**  
**Proposed**  
**District Drug**  
**Warehouse**  
**at CHATTISGARH**

**REVISION**



**GROUND FLOOR PLAN**  
**AREA = 1052.48 SQ.MT.**



**NOTES**  
 1. DRAWING APPROVED BY CGMS OFFICIALS ON 28-12-2013 AND THE COMMENTS GIVEN HAVE BEEN INCORPORATED IN THESE DRAWINGS.

REVISION	NO.	DESCRIPTION

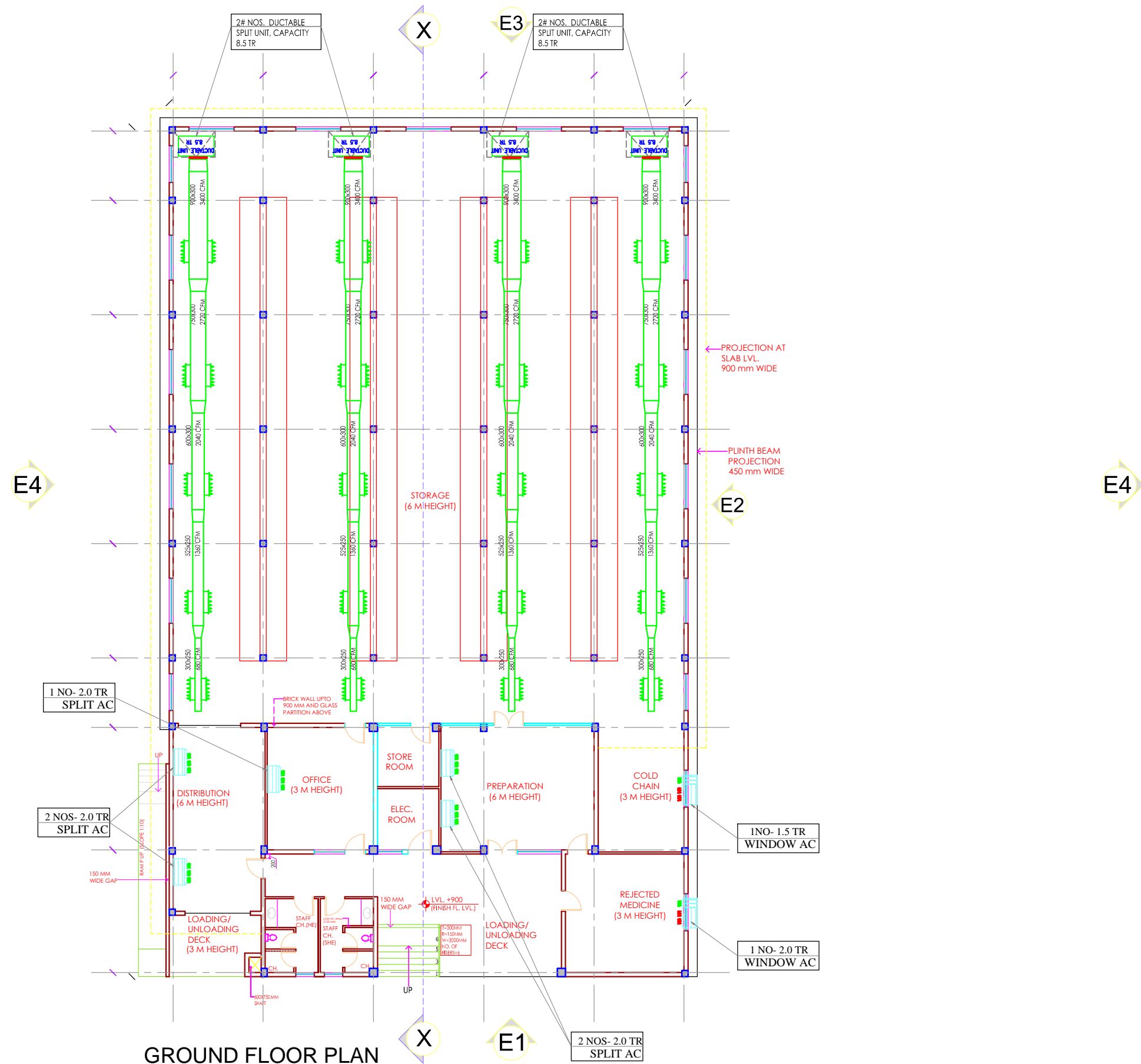
**PROJECT**  
 Proposed Drug Warehouse of CHATTISGARH (Area 1053 Sq. M.)

**TITLE**  
 TENDER DRAWING GROUND FLOOR PLAN ELECTRICAL LAYOUT

HSCC/EV210/TD/D/W/EL-201		
Drawing No.	HSCC/RT210	M/S
Job No.	Scale	Date
App by	Rev. by	Prep. by

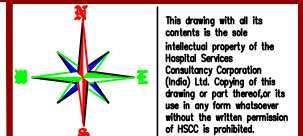


This drawing, with all its contents is the sole intellectual property of the Hospital Services Corporation (India) Ltd. Copying of this drawing or part thereof for use in any form without the permission of HSCC is prohibited.



GROUND FLOOR PLAN

AREA = 1052.48 SQMT.



NOTES  
 1. DRAWING APPROVED BY CGMS OFFICIALS ON 28-12-2013 AND THE COMMENTS GIVEN HAVE BEEN INCORPORATED IN THESE DRAWINGS.

S.NO.	TYPE	WIDTH	CALL	LINTEL
1	D0	1200	---	2150
2	D1	1000	---	2150
3	D2	1500	---	2150
4	D3	800	---	2150
5	DW	2500	300	2150
6	DW1	2400	300	2150
7	W0	2200	900	(BEAM BOTTOM)
8	W1	1800	900	(BEAM BOTTOM)
9	W1A	1800	1350	(BEAM BOTTOM)
10	W2	900	900	(BEAM BOTTOM)
11	W2A	900	1350	(BEAM BOTTOM)
12	W3	1200	300	(BEAM BOTTOM)
13	W4	1500	1350	(BEAM BOTTOM)
14	W5	1200	900	2150
14	V0	600	2000	(BEAM BOTTOM)
14	B5	3000	900	(BEAM BOTTOM)

REVISION

PROJECT  
 TITLE  
 TENDER DRAWING  
 Proposed  
 Drug Warehouse at Durg, CHATISGARH (Area 1053 Sq. M.)

HVAC LAYOUT  
 (SCHEME PURPOSE)

GROUND FLOOR PLAN

HSCC/D&E/HVAC/DDWH/CG/AC-01		
Drawing No.	1:100	05-03-2014
HSCC/EV210 Job No.	Scale	Date
App by	S.S	L.K
	Rev. by	Prep. by

HSCC (INDIA) LIMITED  
 (A GOVERNMENT OF INDIA ENTERPRISE)  
**HSCC**  
 NEW DELHI INDIA