

This drawing with all its contents is the sole intellectual property of the Hospital Services Consultancy Corporation (India) Ltd. Copying of this drawing or part thereof or its use in any form whatsoever without the written permission of HSCC is prohibited.

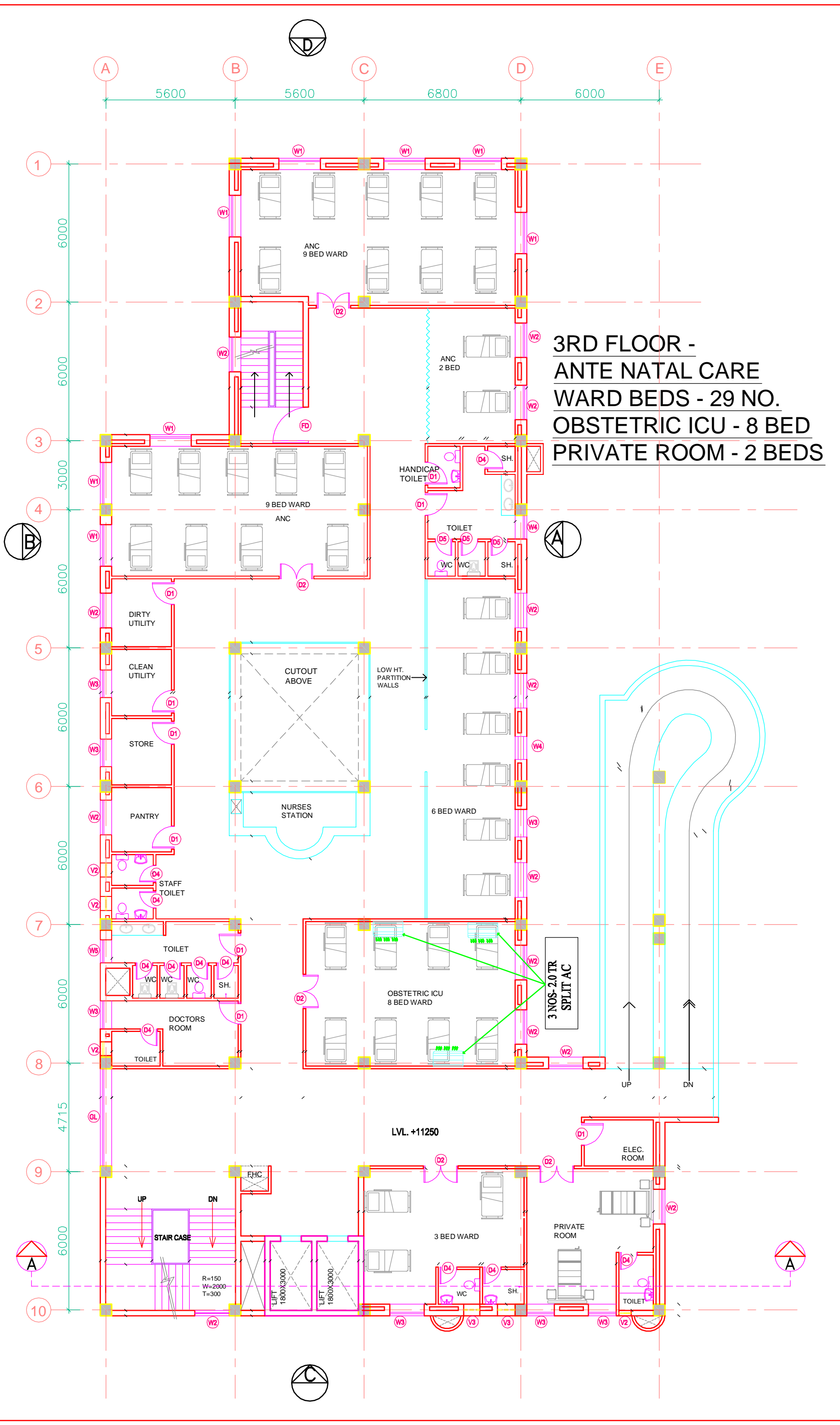
NOTES

1. DRAWINGS TO BE READ NOT MEASURED
2. PARTITION WALL IN TOILETS UP TO LINTEL HEIGHT

DOOR / WINDOW SCHEDULE

S.NO.	TYPE	WIDTH	CILL	LINTE
1	D	2300	—	2100
2	D1	1000	—	2100
3	D2	1500	—	2100
4	FD	1200	—	2250
5	D4	800	—	2100
6	D5	750	—	2100
7	DW1	2200	—	2900
8	W	2000	900	2600
9	W1	1800	900	2600
10	W2	1500	900	2600
11	W3	1200	900	2600
12	W4	1000	900	2600
13	W5	800	900	2600
14	W6	2400	900	2600
15	V1	900	1700	2600
16	V2	600	1700	2600
17	V3	750	1700	2600
18	GL	4500	150	2900

**3RD FLOOR -
ANTE NATAL CARE
WARD BEDS - 29 NO.
OBSTETRIC ICU - 8 BED
PRIVATE ROOM - 2 BEDS**



REVISION - 01
REVISED AS PER THE GUIDELINES OF VETTING COMMITTEE

PROJECT

PROPOSED
100 BEDDED HOSPITAL
MUJAFARNAGAR

TITLE

TENDER DRAWING

HVAC LAYOUT

THIRD FLOOR PLAN

HSCC/D&E/HVAC/UP-MUJAFARNAGAR/AC-04
Rev. - 01

Job No.	1:150 Scale	JUN-2013 Date
---------	----------------	------------------

App by	Rev. by	Prep. by
--------	---------	----------

PRODUCED BY AN AUTODESK EDUCATIONAL PRODUCT

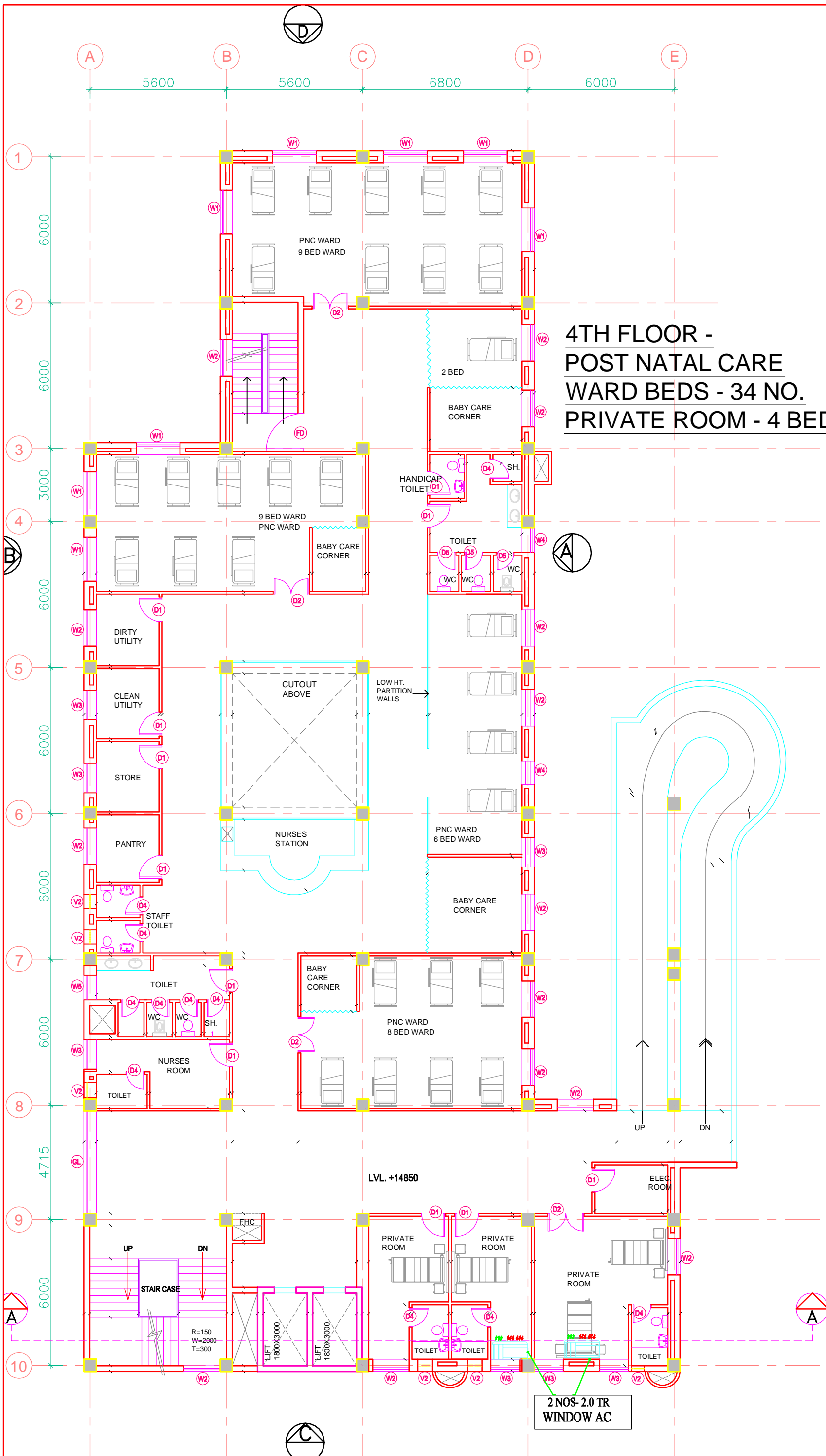
This drawing with all its contents is the sole intellectual property of the Hospital Services Consultancy Corporation (India) Ltd. Copying of this drawing or part thereof or its use in any form whatsoever without the written permission of HSCC is prohibited.

NOTES

1. DRAWINGS TO BE READ NOT MEASURED
2. PARTITION WALL IN TOILETS UP TO LINTEL HEIGHT

DOOR / WINDOW SCHEDULE

S.NO.	TYPE	WIDTH	CILL	LINTE
1	D	2000	—	2100
2	D1	1000	—	2100
3	D2	1500	—	2100
4	FD	1200	—	2250
5	D4	800	—	2100
6	D5	750	—	2100
7	DW1	2200	—	2900
8	W	2000	900	2600
9	W1	1800	900	2600
10	W2	1500	900	2600
11	W3	1200	900	2600
12	W4	1000	900	2600
13	W5	800	900	2600
14	W6	2400	900	2600
15	V1	900	1700	2600
16	V2	600	1700	2600
17	V3	750	1700	2600
18	GL	4500	150	2900



**4TH FLOOR -
POST NATAL CARE
WARD BEDS - 34 NO.
PRIVATE ROOM - 4 BEDS**

2 NOS- 2.0 TR WINDOW AC

REVISION - 01
REVISED AS PER THE GUIDELINES OF VETTING COMMITTEE

PROJECT
PROPOSED
100 BEDDED HOSPITAL
MUJAFFARNAGAR

TITLE
TENDER DRAWING
HVAC LAYOUT
FOURTH FLOOR PLAN

HSCC/D&E/HVAC/UP-MUJAFFARNAGAR/AC-05
Rev. - 01

Job No.	1:150 Scale	JUN-2013 Date
---------	----------------	------------------

App by	Rev. by	Prep. by
--------	---------	----------

HSCC (INDIA) LIMITED
(A GOVERNMENT OF INDIA ENTERPRISES)
HSCC
NEW DELHI INDIA

PRODUCED BY AN AUTODESK EDUCATIONAL PRODUCT

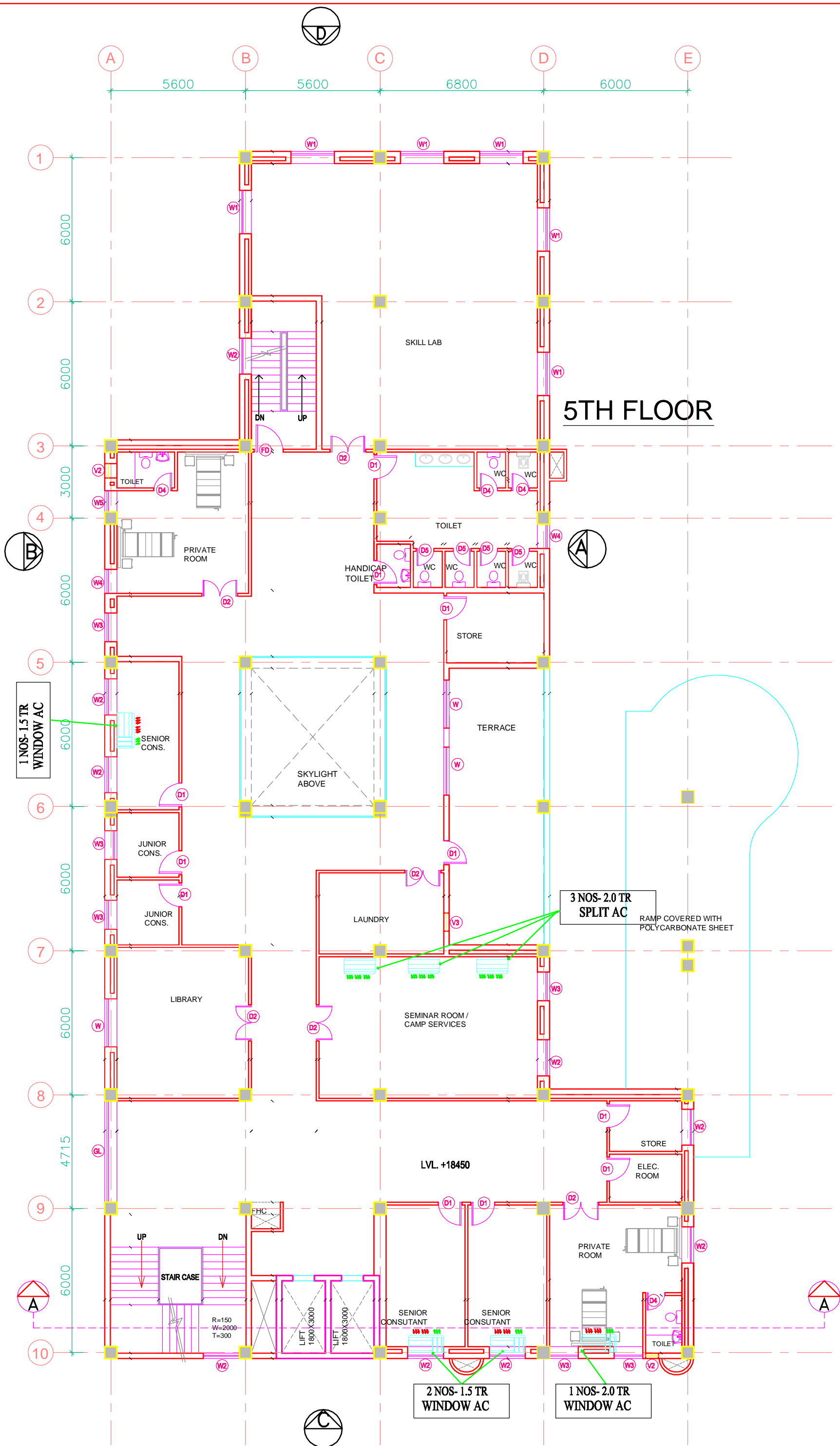
This drawing with all its contents is the sole intellectual property of the Hospital Services Consultancy Corporation (India) Ltd. Copying of this drawing or part thereof or its use in any form whatsoever without the written permission of HSCC is prohibited.

NOTES

1. DRAWINGS TO BE READ NOT MEASURED
2. PARTITION WALL IN TOILETS UP TO LINTEL HEIGHT

DOOR / WINDOW SCHEDULE

S.NO.	TYPE	WIDTH	CILL	LINTE
1	D	2000	—	2100
2	D1	1000	—	2100
3	D2	1500	—	2100
4	FD	1200	—	2250
5	D4	800	—	2100
6	D5	750	—	2100
7	DW1	2200	—	2900
8	W	2000	900	2600
9	W1	1800	900	2600
10	W2	1500	900	2600
11	W3	1200	900	2600
12	W4	1000	900	2600
13	W5	800	900	2600
14	W6	2400	900	2600
15	V1	900	1700	2600
16	V2	600	1700	2600
17	V3	750	1700	2600
18	GL	4500	150	2900



REVISION - 01
REVISED AS PER THE GUIDELINES OF VETTING COMMITTEE

PROJECT
PROPOSED
100 BEDDED HOSPITAL
MUJAFFARNAGAR

TITLE
TENDER DRAWING
HVAC LAYOUT
FIFTH FLOOR PLAN

HSCC/D&E/HVAC/UP-MUJAFFARNAGAR/AC-06
Rev. - 01

Job No.	1:150 Scale	JUNE-2013 Date
---------	----------------	-------------------

App by	Rev. by	Prep. by
--------	---------	----------

HSCC (INDIA) LIMITED
(A GOVERNMENT OF INDIA ENTERPRISES)
HSCC
NEW DELHI INDIA

PRODUCED BY AN AUTODESK EDUCATIONAL PRODUCT