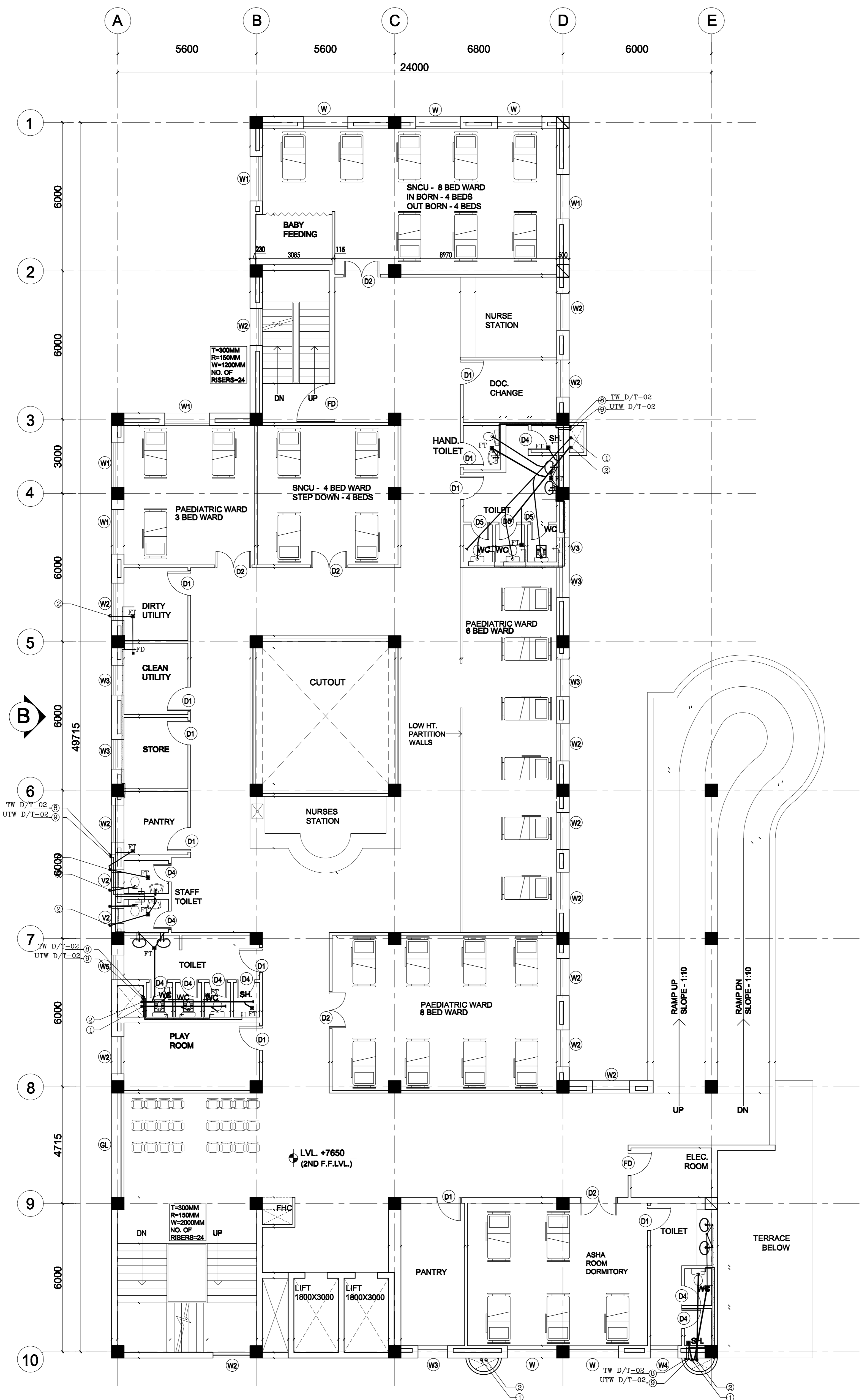


2ND FLOOR -  
PAEDIATRIC CARE



**NORTH**

This drawing with all its contents is the sole intellectual property of the Hospital Services Consulting Corporation (HSCC) and shall not be used, copied, reproduced, or otherwise disseminated without the written permission of HSCC. It is prohibited.

**LEGEND:**

|     |                           |
|-----|---------------------------|
| 1   | 100 Ø CI SOIL & VENT PIPE |
| 2   | 100Ø CLWASTE & VENT PIPE  |
| 3   | 100Ø CI SOIL PIPE         |
| 4   | 100Ø CI WASTE PIPE        |
| 5   | 50Ø uPVC SOIL PIPE        |
| 6   | 40Ø uPVC WASTE PIPE       |
| 7   | 32Ø uPVC WASTE PIPE       |
| 8   | TW DN / TAKE              |
| 9   | UTW DN / TAKE             |
| 10  | 150 Ø S.W. PIPE           |
| F.1 | FLOOR TRAP 100X100        |
| F.D | FLOOR DRAIN 50Ø           |
| FCO | FLOOR CLEAN OUT VALVE     |
| MH  | MANHOLE (900X800)mm       |
| GT  | GULLY TRAP (300X300)mm    |

**PROJECT**

**PROPOSED  
100 BEDED  
HOSPITAL  
MUJAFARNAGAR  
(UP)**

**TITLE PLUMBING  
TENDER DRAWING**

**SECOND FLOOR PLAN**

HSCC/DAE/M/HS/TP/PL-03  
Drawing No.

|         |         |          |
|---------|---------|----------|
| Job No. | Scale   | Date     |
| App by  | Rev. by | Prep. by |