

**NATIONAL RURAL HEALTH MISSION SCHEME,  
UTTAR PRADESH**

**(Government of Uttar Pradesh)**

**Tender**

**For**

Construction of 100 bedded MCH wing at District Hospital  
Aligarh (Uttar Pradesh) under National Rural Health Mission scheme

**Tender Drawings**

**VOLUME-VI**

**March' 2014**



HSCC (INDIA) LTD.  
(CONSULTANTS & ENGINEERS FOR MEGA HOSPITALS & LABORATORIES)  
E-6(A), sector-1, NOIDA(U.P) 201301 (India)

Phone : 0120-2542436-40

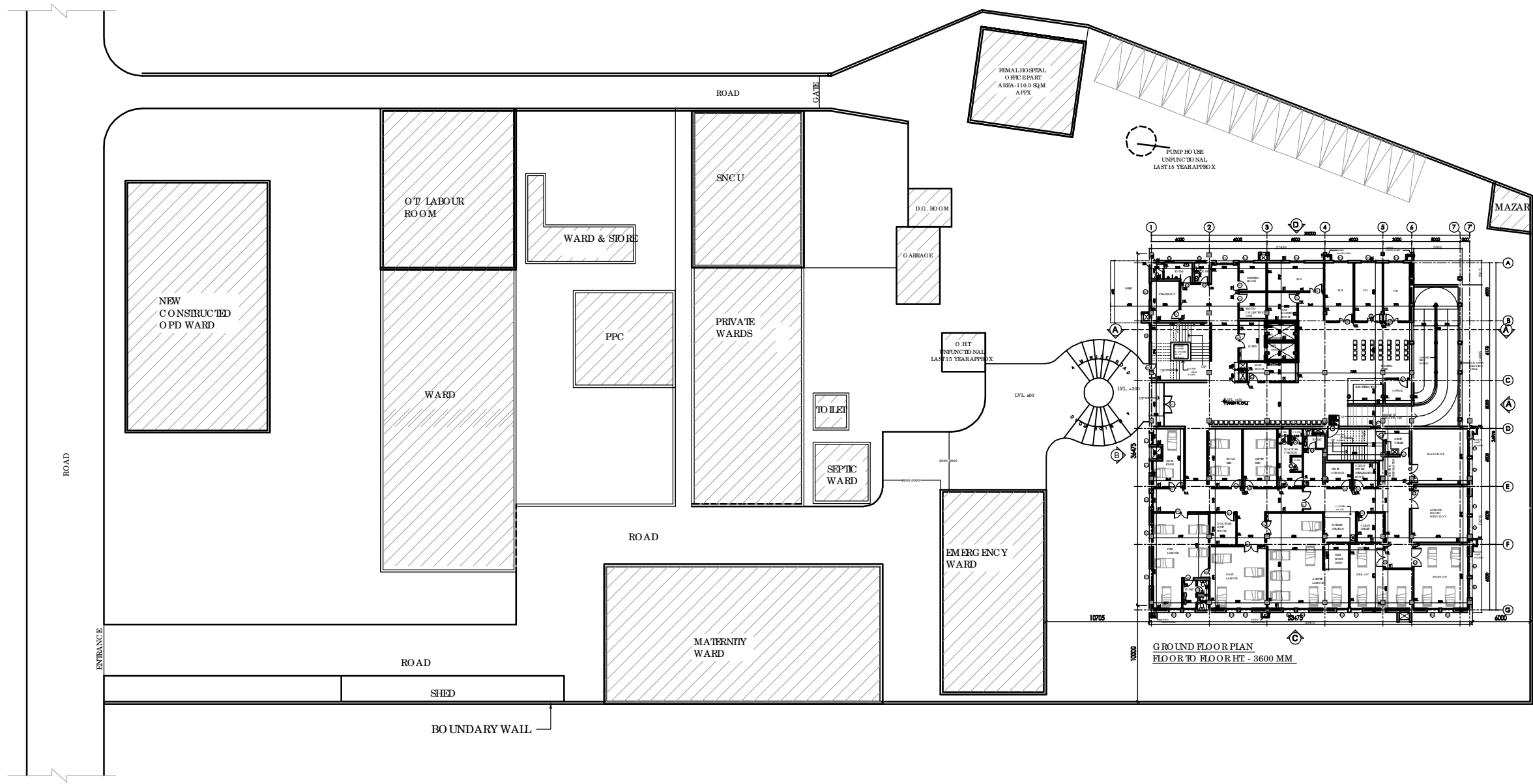
Fax : 0120-2542447

**Tender No. HSCC/NRHM/UP/Tender/2014 /04**

This drawing with its contents is the sole Hospital Services Consultancy Corporation intellectual property of the (India) LTD. Copying of this drawing or part thereof or its use in any form whatsoever without the written permission of HSCC is prohibited.

**NOTES**

1. ALL DIMENSIONS ARE IN MM.
2. ALL DIMENSIONS ARE TO BE READ AND NOT MEASURED.



REV	DATE	DESCRIPTION
01	09-01-14	REVISED AS PER THE COMMENTS OF VETTING COMMITTEE

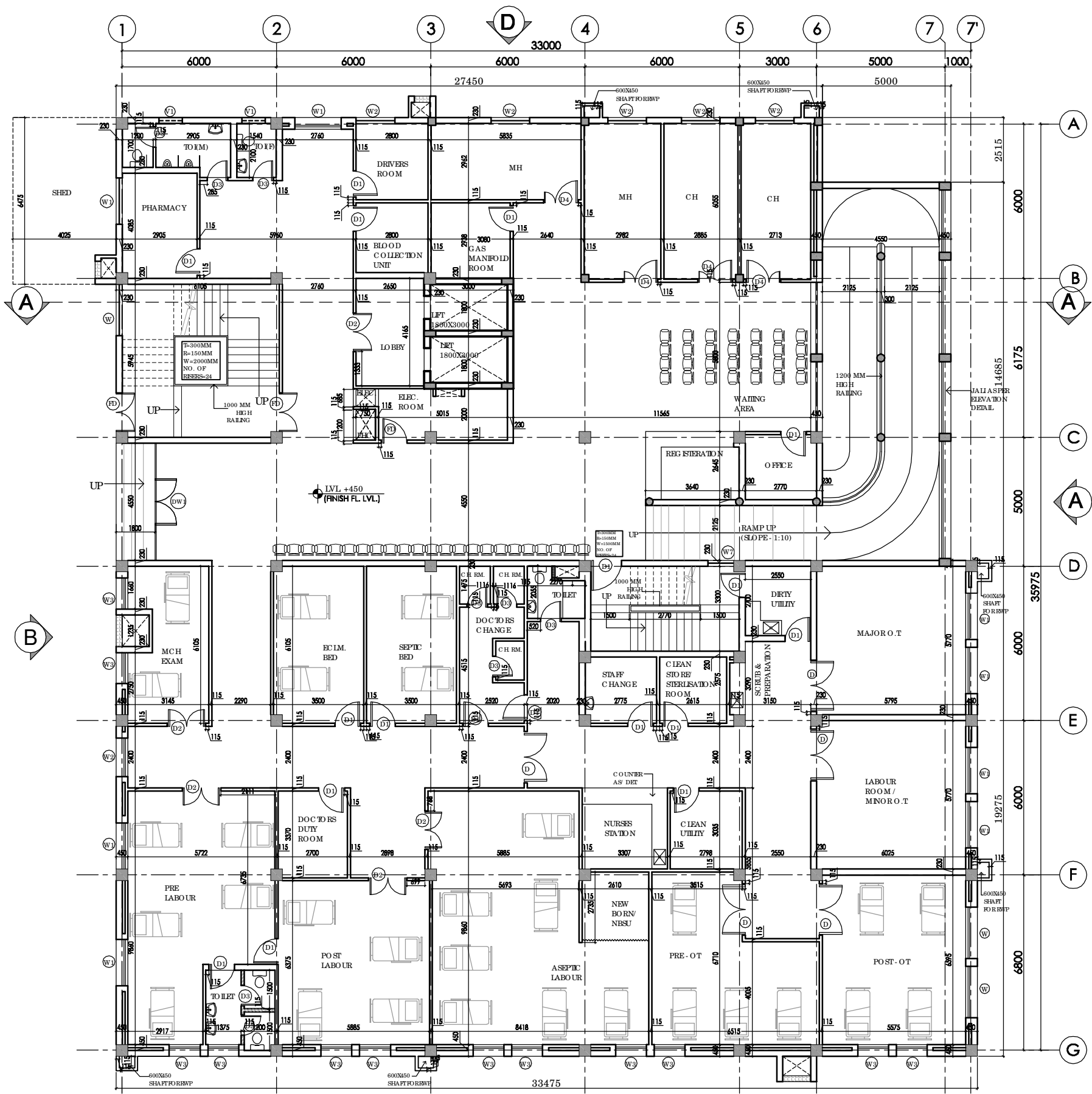
**PROJECT**  
PROPOSED  
100 BEDDED HOSPITAL  
ALIGARH, U.P.

**TITLE**  
TENDER DRAWING  
(ARCHITECTURE)

**SITE PLAN**  
HSCC/ALIGARH/TD/HOSP/001/R-1  
Drawing No.

Job No.	1:500 Scale	FEB 14, 2014 Date
RK App by	SS Rev. by	LK Prep. by

This drawing with all its contents is the sole Hospital Services Consultancy Corporation Intellectual property of the (India) LTD. Copying of this drawing or part thereof, or its use in any form whatsoever without the written permission of HSCC is prohibited.



**GROUND FLOOR PLAN**  
**FLOOR TO FLOOR HT - 3600 MM**

**NOTES**

1. ALL DIMENSIONS ARE IN MM.
2. ALL DIMENSIONS ARE TO BE READ AND NOT MEASURED.

SNO.	TYPE	WE/HT	CBL.	LN/BL.
1	D	2000	—	2150
2	D1	1000	—	2150
3	D2	1500	—	2150
4	D3	800	—	2150
5	D4	1350	—	2150
6	D5	1200	—	2150
7	D6	1000	150	2300
8	D7	1000	—	2150
9	DW1	4500	—	2500
10	DW2	2015	900	2600
11	W	2000	900	2600
12	W1	1800	900	2600
13	W2	1500	900	2600
14	W3	1300	900	2600
15	W4	2400	900	2600
16	W5	900	900	2600
17	W6	600	900	2600
18	W7	1000	900	2600
19	W8	800	900	2600
20	W9	775	900	2600
21	V1	900	1700	2600
22	V2	600	1700	2600

RI	DATE	REVISION AS PER THE COMMENTS OF VETTING COMMITTEE

**PROJECT**  
 PROPOSED  
 100 BEDDED HOSPITAL  
 ALIGARH, U.P.

**TITLE**  
 TENDER DRAWING  
 (ARCHITECTURE)

**GROUND FLOOR PLAN**  
 AREA - 1216.85 SQM

HSCC/ALIGARH/TD/HOSP/002/R-1  
 Drawing No.

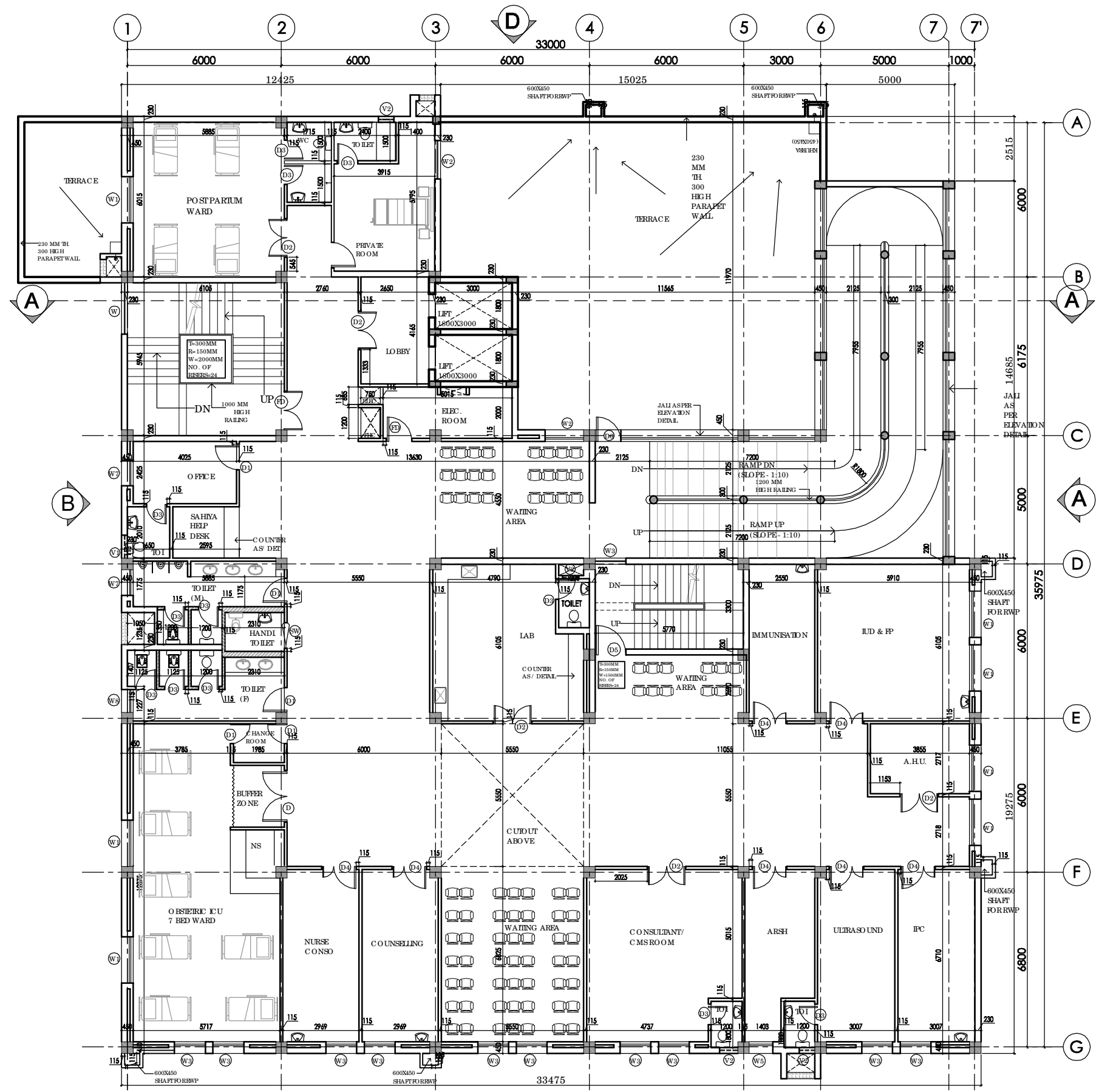
Job No.	1:175 Scale	FEB 14, 2014 Date
---------	----------------	----------------------

RK App by	SS Rev. by	LK Prep. by
--------------	---------------	----------------

This drawing with all its contents is the sole property of HSCC (India) Limited. Copying of this drawing or part thereof, or its use in any form whatsoever without the written permission of HSCC is prohibited.

**NOTES**  
 1. ALL DIMENSIONS ARE IN MM.  
 2. ALL DIMENSIONS ARE TO BE READ AND NOT MEASURED.

S.NO.	TYPE	WEIGHT	C.L.	L.N.B.
1	D	2000	—	2150
2	D1	1000	—	2150
3	D2	1500	—	2150
4	D3	800	—	2150
5	D4	1350	—	2150
6	D5	1200	—	2150
7	D6	1000	150	2300
8	SW	1000	—	2150
9	DW1	4500	—	2500
10	DW2	2015	900	2600
11	W	2000	900	2600
12	W1	1800	900	2600
13	W2	1500	900	2600
14	W3	1300	900	2600
15	W4	2400	900	2600
16	W5	900	900	2600
17	W6	600	900	2600
18	W7	1000	900	2600
19	W8	800	900	2600
20	W9	775	900	2600
21	V1	900	1700	2600
22	V2	600	1700	2600



**FIRST FLOOR PLAN**  
**OPD + OBSTETRIC ICU**  
**PRIVATE ROOM - 1 BED**  
**FLOOR TO FLOOR HT. - 3600 MM**

RI	DATE	REVISION AS PER THE COMMENTS OF VETTING COMMITTEE

**PROJECT**  
 PROPOSED  
 100 BEDDED HOSPITAL  
 ALIGARH, U.P.

**TITLE**  
 TENDER DRAWING  
 (ARCHITECTURE)

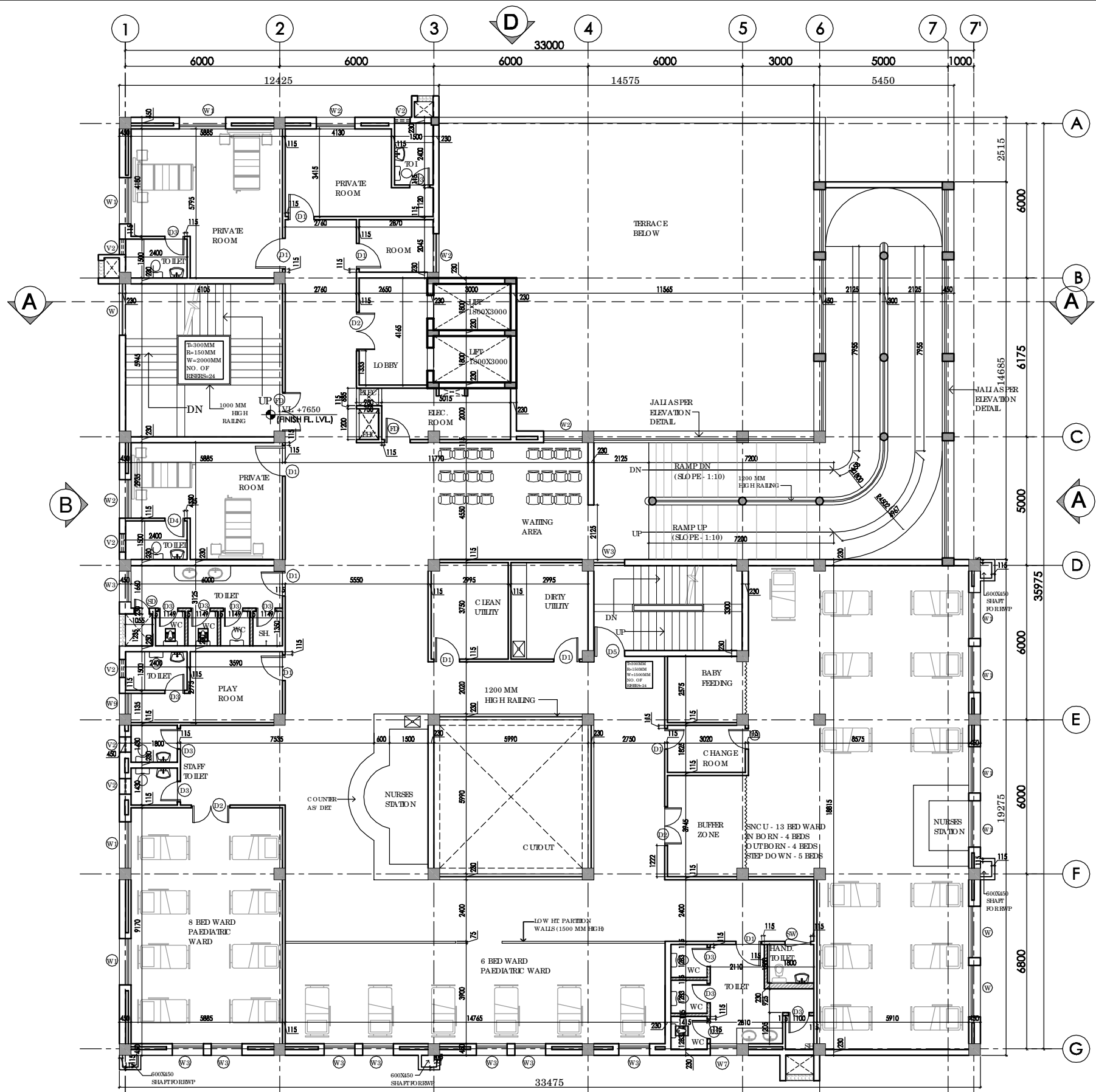
FIRST FLOOR PLAN  
 AREA - 1030 SQM  
 HSCC/ALIGARH/TD/HOSP/003/R-1  
 Drawing No.

Job No.	1:175 Scale	FEB 14, 2014 Date
App by	SS Rev. by	LK Prep. by

This drawing with its contents is the sole property of HSCC (India) Limited. Copying of this drawing or part thereof without the written permission of HSCC is prohibited.

**NOTES**  
 1. ALL DIMENSIONS ARE IN MM.  
 2. ALL DIMENSIONS ARE TO BE READ AND NOT MEASURED.

S.NO.	TYPE	WEIGHT	C.L.	L.N.B.E.
1	D	2000	—	2150
2	D1	1000	—	2150
3	D2	1500	—	2150
4	D3	800	—	2150
5	D4	1350	—	2150
6	D5	1200	—	2150
7	D6	1000	150	2300
8	SW	1000	—	2150
9	DW1	4500	—	2500
10	DW2	2515	900	2600
11	W	2000	900	2600
12	W1	1800	900	2600
13	W2	1500	900	2600
14	W3	1300	900	2600
15	W4	2400	900	2600
16	W5	900	900	2600
17	W6	600	900	2600
18	W7	1000	900	2600
19	W8	892.50	900	2600
20	W9	775	900	2600
21	V1	900	1700	2600
22	V2	600	1700	2600



**2ND FLOOR  
 PAEDIATRIC CARE  
 SNCU WARD - 13 BEDS  
 PAEDIATRIC WARD - 14 BEDS, PRIVATE ROOMS - 5 BEDS  
 FLOOR TO FLOOR HT - 3600 MM**

REV	DATE	DESCRIPTION

**PROJECT**  
 PROPOSED  
 100 BEDDED HOSPITAL  
 ALIGARH, U.P.

**TITLE**  
 TENDER DRAWING  
 (ARCHITECTURE)

**SECOND FLOOR PLAN**  
 AREA - 1030 SQM

HSCC/ALIGARH/TD/HOSP/004/R-1  
 Drawing No.

Job No. 1:175 Scale FEB 14, 2014 Date

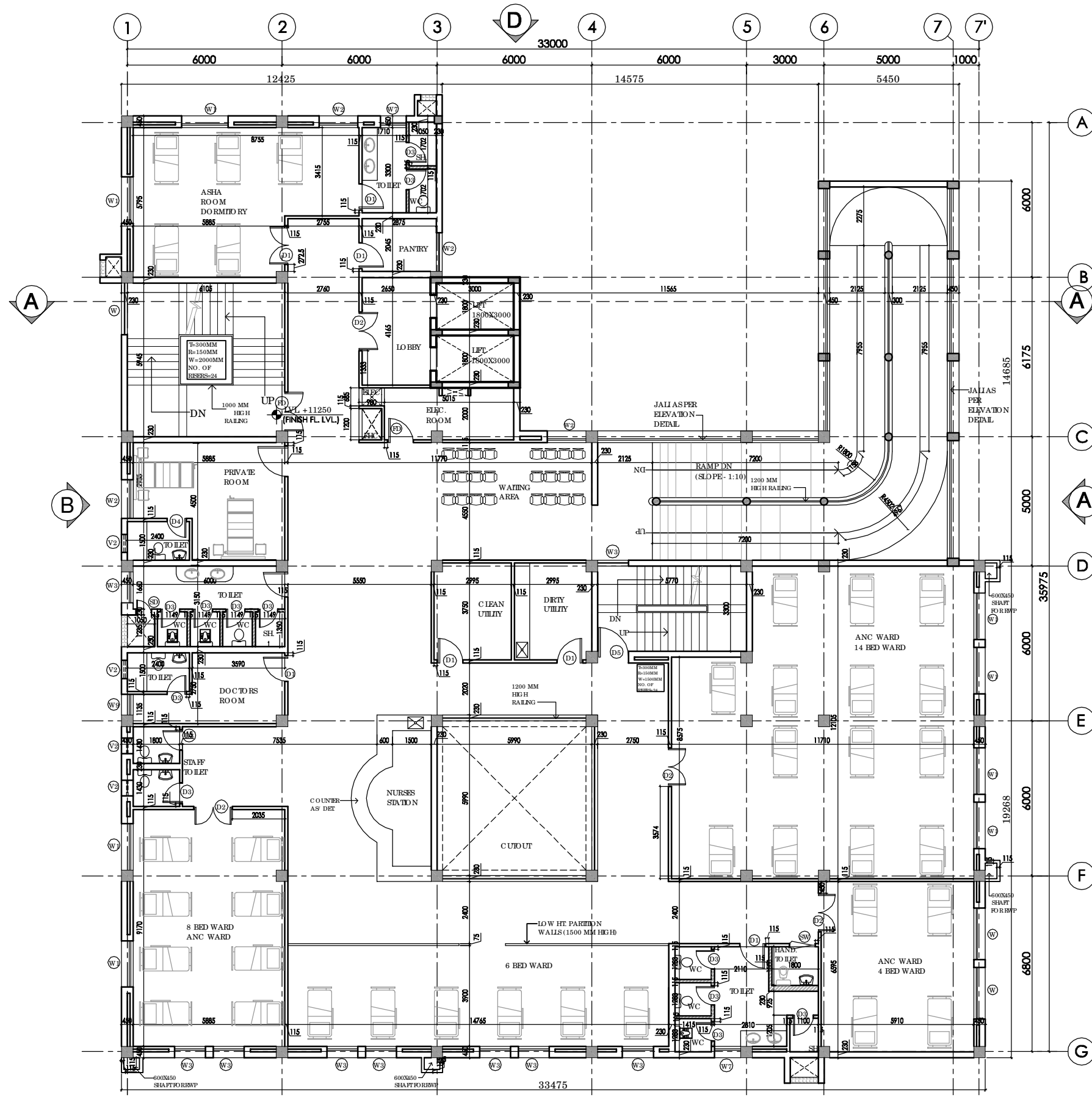
App by SS Rev. by LK Prep. by

**HSCC (INDIA) LIMITED**  
 (A GOVERNMENT OF INDIA ENTERPRISE)  
**HSCC**  
 NEW DELHI INDIA

This drawing with its contents is the sole Hospital Services Consultancy Corporation intellectual property of the (India) LTD. Copying of this drawing or part thereof or its use in any form whatsoever without the written permission of HSCC is prohibited.

**NOTES**  
 1. ALL DIMENSIONS ARE IN MM.  
 2. ALL DIMENSIONS ARE TO BE READ AND NOT MEASURED.

S.NO.	TYPE	WE/HT	CEL.	LN/BE.
1	D	2000	—	2150
2	D1	1000	—	2150
3	D2	1500	—	2150
4	D3	800	—	2150
5	D4	1350	—	2150
6	D5	1200	—	2150
7	D6	1000	150	2300
8	SW	1000	—	2150
9	DW1	4500	—	2500
10	DW2	2015	900	2600
11	W	2000	900	2600
12	W1	1800	900	2600
13	W2	1500	900	2600
14	W3	1300	900	2600
15	W4	2400	900	2600
16	W5	900	900	2600
17	W6	600	900	2600
18	W7	1000	900	2600
19	W8	892.50	900	2600
20	W9	775	900	2600
21	V1	900	1700	2600
22	V2	600	1700	2600



**3RD FLOOR -**  
**ANTENATAL CARE WARD - 32 BEDS**  
**ASHA ROOM DORMITORY - 5 BEDS**  
**PRIVATE ROOM - 2 BEDS**  
**FLOOR TO FLOOR HT. - 3600 MM**

REV.	DATE	DESCRIPTION

**PROJECT**  
 PROPOSED  
 100 BEDDED HOSPITAL  
 ALIGARH, U.P.

**TITLE**  
 TENDER DRAWING  
 (ARCHITECTURE)

**THIRD FLOOR PLAN**  
 AREA - 1030 SQM  
 HSCC/ALGARH/TD/HOSP/005/R-1  
 Drawing No.

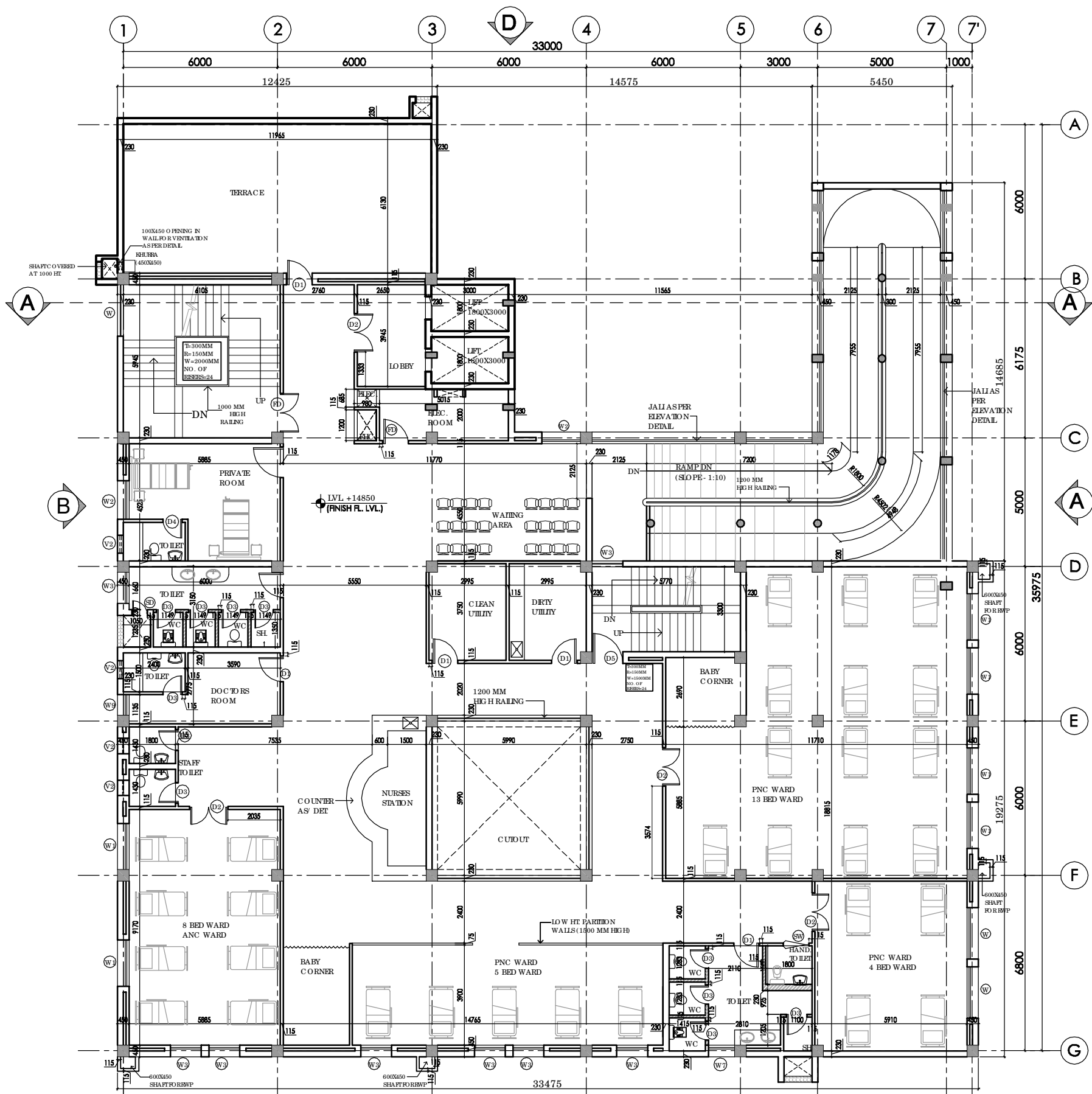
Job No.	1:175 Scale	FEB 14, 2014 Date
App. by	SS Rev. by	LK Prep. by

**HSCC (INDIA) LIMITED**  
 (A GOVERNMENT OF INDIA ENTERPRISE)  
**HSCC**  
 NEW DELHI INDIA

This drawing with all its contents is the sole Hospital Services Consultancy Corporation intellectual property of the (India) LTD. Copying of this drawing or part thereof, or its use in any form whatsoever without the written permission of HSCC is prohibited.

**NOTES**  
 1. ALL DIMENSIONS ARE IN MM.  
 2. ALL DIMENSIONS ARE TO BE READ AND NOT MEASURED.

S.NO.	TYPE	WE/BE	CEL.	LN/BE.
1	D	2000	—	2150
2	D1	1000	—	2150
3	D2	1500	—	2150
4	D3	800	—	2150
5	D4	1350	—	2150
6	D5	1200	—	2150
7	D6	1000	150	2300
8	SW	1000	—	2150
9	DW1	4500	—	2500
10	DW2	2015	900	2600
11	W	2000	900	2600
12	W1	1800	900	2600
13	W2	1500	900	2600
14	W3	1300	900	2600
15	W4	2400	900	2600
16	W5	900	900	2600
17	W6	600	900	2600
18	W7	1000	900	2600
19	W8	892.50	900	2600
20	W9	775	900	2600
21	V1	900	1700	2600
22	V2	600	1700	2600



**4TH FLOOR -**  
**POSTNATAL CARE WARD - 30 BEDS**  
**PRIVATE ROOM - 2 BEDS**  
**FLOOR TO FLOOR HT. - 3600 MM**

RI	DATE	REVISION AS PER THE COMMENTS OF VETTING COMMITTEE

**PROJECT**  
 PROPOSED  
 100 BEDDED HOSPITAL  
 ALIGARH, U.P.

**TITLE**  
 TENDER DRAWING  
 (ARCHITECTURE)

**FOURTH FLOOR PLAN**  
 AREA - 832.13 SQM  
 HSCC/ALGARH/TD/HOSP/004/R-1  
 Drawing No.

Job No.	1:175 Scale	FEB 14, 2014 Date

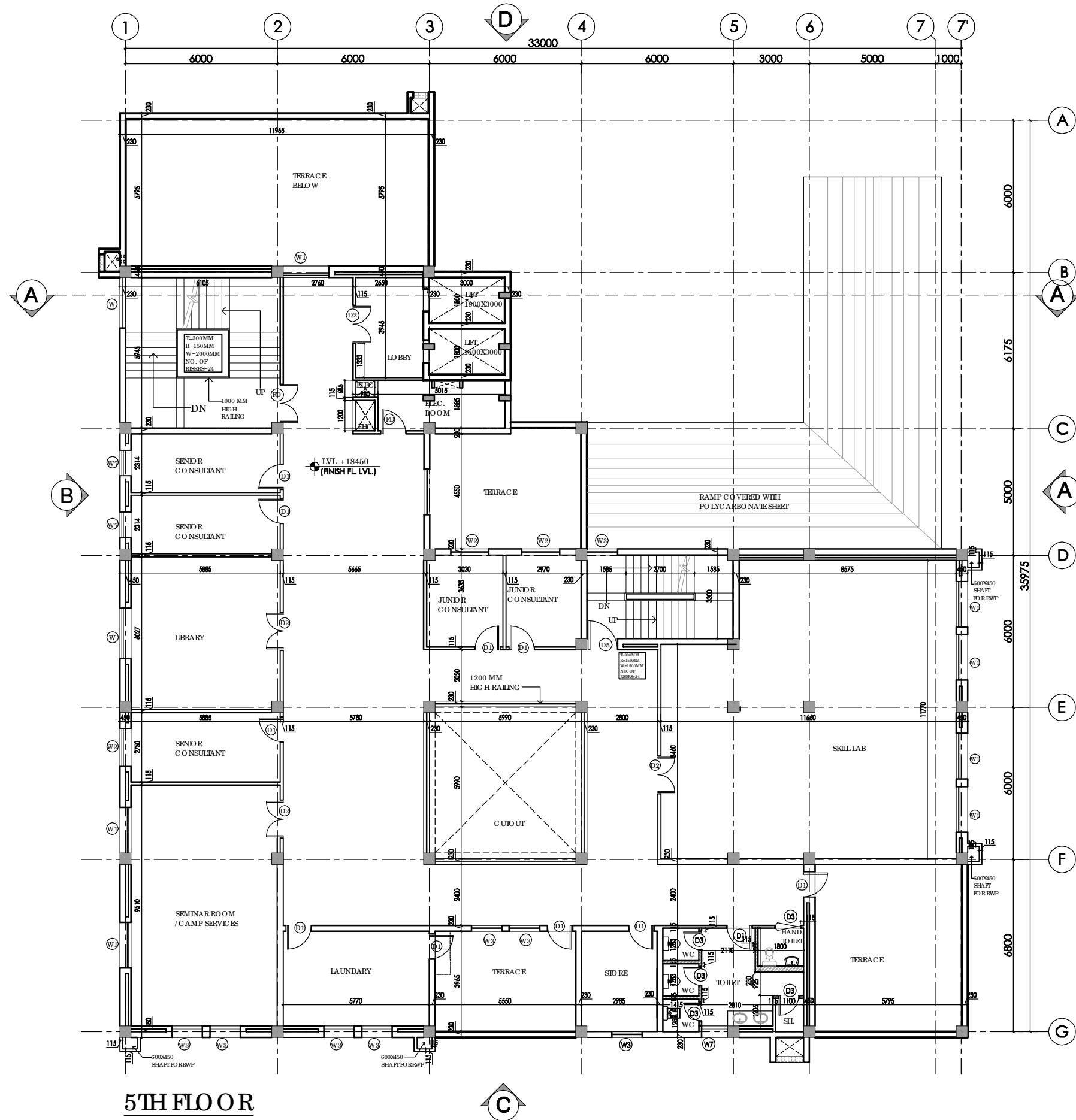
App by	Rev. by	Prep. by

HSCC (INDIA) LIMITED  
 (A GOVERNMENT OF INDIA ENTERPRISE)  
**HSCC**  
 NEW DELHI INDIA

This drawing with its contents is the sole property of HSCC (India) Limited. Copying or its use in any form whatsoever without the written permission of HSCC is prohibited.

**NOTES**  
 1. ALL DIMENSIONS ARE IN MM.  
 2. ALL DIMENSIONS ARE TO BE READ AND NOT MEASURED.

S.NO.	TYPE	WEIGHT	C.B.L.	L.N.B.L.
1	D	2000	—	2150
2	D1	1000	—	2150
3	D2	1500	—	2150
4	D3	800	—	2150
5	D4	1350	—	2150
6	D5	1200	—	2150
7	D6	1000	150	2300
8	SW	1000	—	2150
9	DW1	4500	—	2500
10	DW2	2815	900	2600
11	W	2000	900	2600
12	W1	1800	900	2600
13	W2	1500	900	2600
14	W3	1300	900	2600
15	W4	2400	900	2600
16	W5	900	900	2600
17	W6	600	900	2600
18	W7	1000	900	2600
19	W8	892.50	900	2600
20	W9	775	900	2600
21	V1	900	1700	2600
22	V2	600	1700	2600



**5TH FLOOR**

REV.	DATE	DESCRIPTION

**PROJECT**  
 PROPOSED  
 100 BEDDED HOSPITAL  
 ALIGARH, U.P.

**TITLE**  
 TENDER DRAWING  
 (ARCHITECTURE)

FIFTH FLOOR PLAN  
 AREA - 738.13 SQM  
 HSCC/ALIGARH/TD/HOSP/007/R-1  
 Drawing No.

Job No. 1:175 Scale FEB 14, 2014 Date

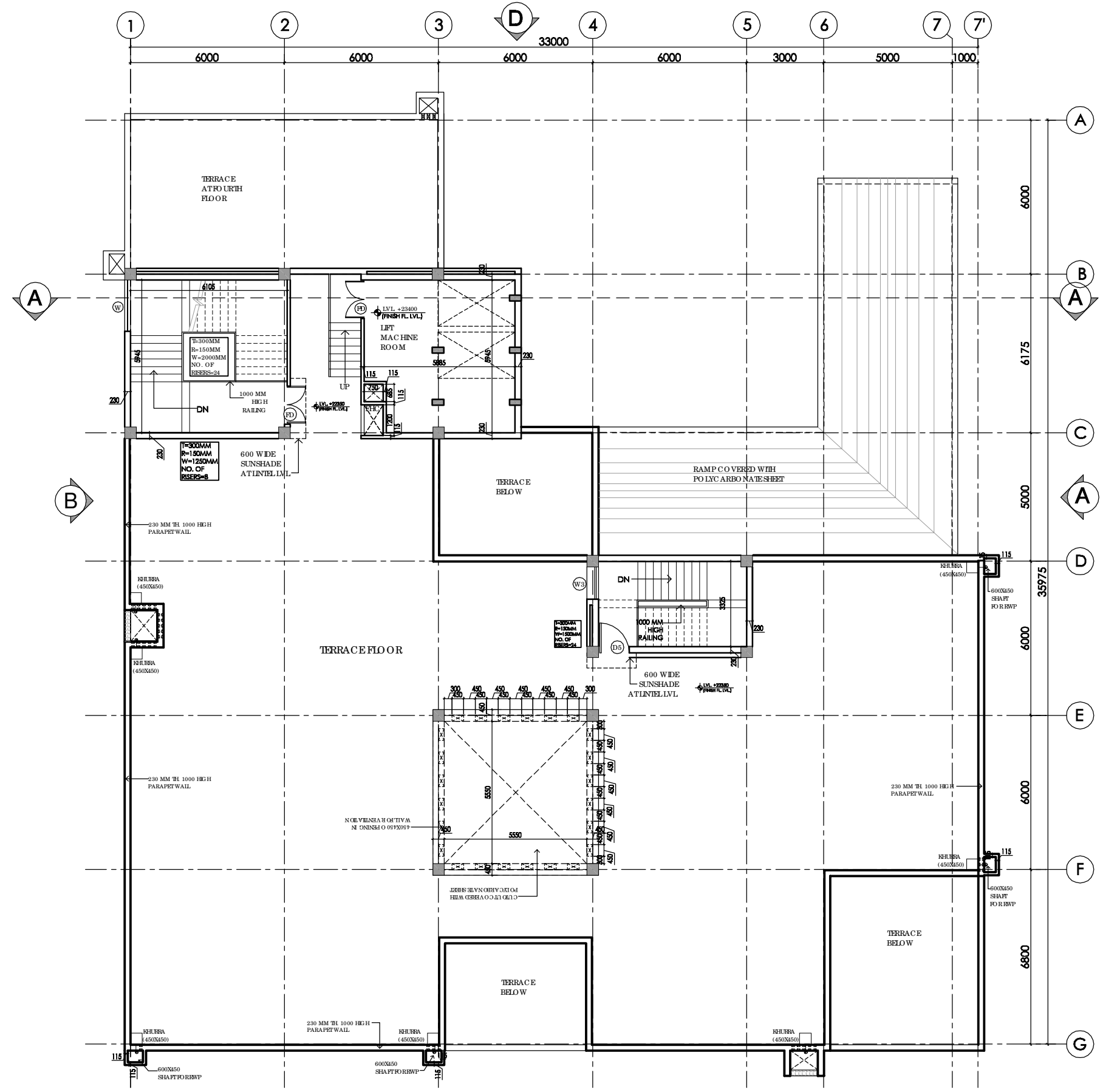
RK App by SS Rev. by LK Prep. by



This drawing with all its contents is the sole property of HSCC (India) Limited. Copying or reproduction in any form without the written permission of HSCC is prohibited.

**NOTES**  
 1. ALL DIMENSIONS ARE IN MM.  
 2. ALL DIMENSIONS ARE TO BE READ AND NOT MEASURED.

S.NO.	TYPE	WEIGHT	C.L.	LNTH.
1	D	2000	—	2150
2	D1	1000	—	2150
3	D2	1500	—	2150
4	D3	800	—	2150
5	D4	1350	—	2150
6	D5	1200	—	2150
7	D6	1000	150	2300
8	SW	1000	—	2150
9	DW1	4500	—	2500
10	DW2	2815	900	2600
11	W	2000	900	2600
12	W1	1800	900	2600
13	W2	1500	900	2600
14	W3	1300	900	2600
15	W4	2400	900	2600
16	W5	900	900	2600
17	W6	600	900	2600
18	W7	1000	900	2600
19	W8	892.50	900	2600
20	W9	775	900	2600
21	V1	900	1700	2600
22	V2	600	1700	2600



**TERRACE FLOOR**  
**FLOOR TO FLOOR HT - 3600 MM**

REV.	DATE	DESCRIPTION

**PROJECT**  
 PROPOSED  
 100 BEDDED HOSPITAL  
 ALIGARH, U.P.

**TITLE**  
 TENDER DRAWING  
 (ARCHITECTURE)

**TERRACE PLAN**  
 AREA - 104.38 SQM  
 HSCC/ALIGARH/TD/HOSP/008/R-1  
 Drawing No.

Job No.	1:175 Scale	FEB 14, 2014 Date

App by	Rev. by	Prep. by

This drawing with all its contents is the sole Hospital Services Consultancy Corporation intellectual property of the (India) LTD. Copying of this drawing or part thereof, or its use in any form whatsoever without the written permission of HSCC is prohibited.

- NOTES**
1. ALL DIMENSIONS ARE IN MM.
  2. ALL DIMENSIONS ARE TO BE READ AND NOT MEASURED.

SNO.	TYPE	WEIGHT	CBL.	LNTH.
1	D	2000	—	2150
2	D1	1000	—	2150
3	D2	1500	—	2150
4	D3	800	—	2150
5	D4	1350	—	2150
6	D5	1200	—	2150
7	D6	1000	150	2300
8	SW	1000	—	2150
9	DW1	4500	—	2900
10	DW2	2015	900	2600
11	W	2000	900	2600
12	W1	1800	900	2600
13	W2	1500	900	2600
14	W3	1300	900	2600
15	W4	2400	900	2600
16	W5	900	900	2600
17	W6	600	900	2600
18	W7	1000	900	2600
19	W8	892.50	900	2600
20	W9	775	900	2600
21	V1	900	1700	2600
22	V2	600	1700	2600



**ELEVATION B**

SI	DATE	REVISION

**PROJECT**  
 PROPOSED  
 100 BEDDED HOSPITAL  
 ALIGARH, U.P.

**TITLE**  
 TENDER DRAWING  
 (ARCHITECTURE)

ELEVATION B

HSCC/ALIGARH/TD/HOSP/010/R-1  
 Drawing No.

Job No.	1:175 Scale	FEB 14, 2014 Date
---------	----------------	----------------------

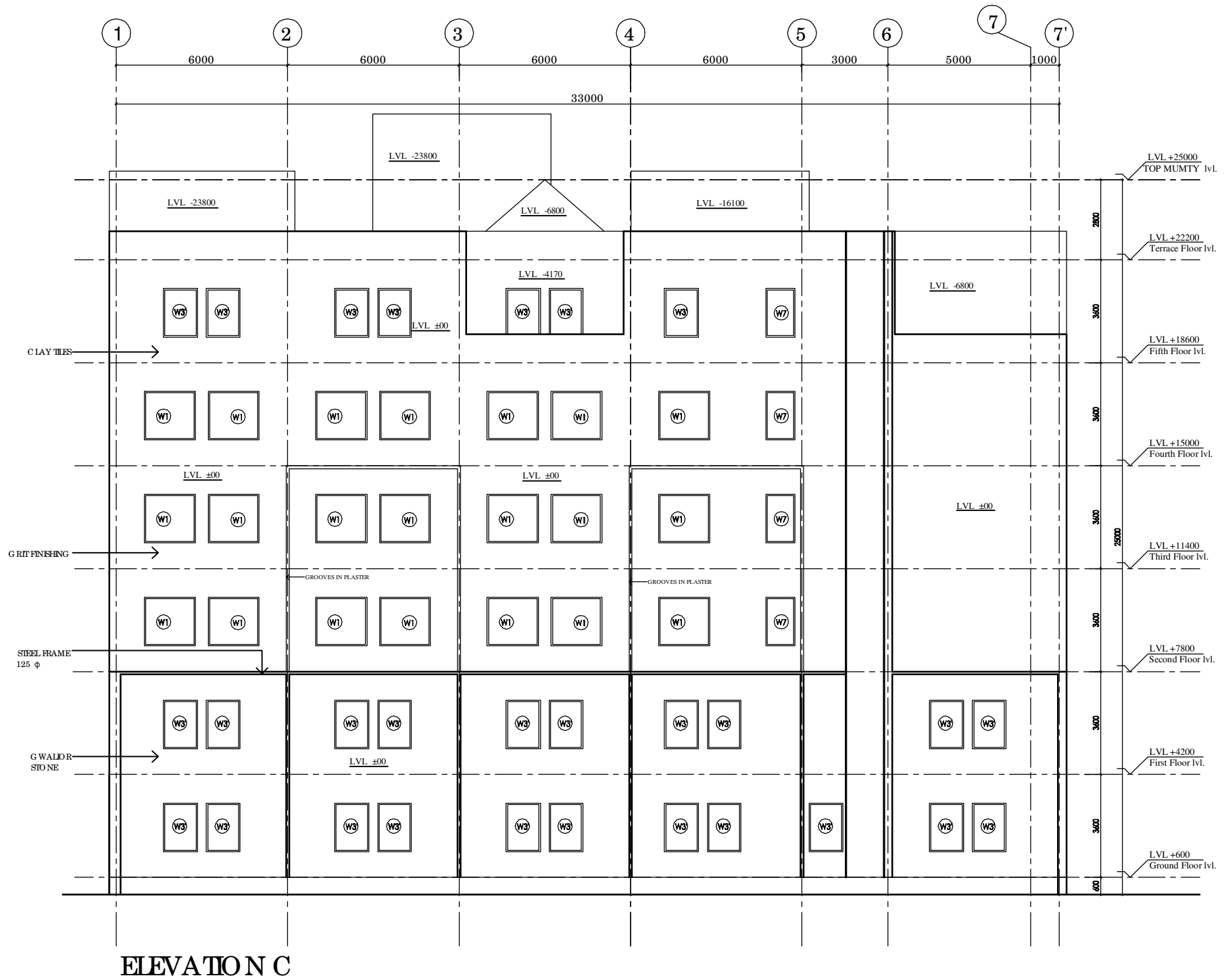
RK App by	SS Rev. by	LK Prep. by
--------------	---------------	----------------

This drawing with its contents is the sole Hospital Services Consultancy Corporation intellectual property of the (India) LTD. Copying of this drawing or part thereof, or its use in any form whatsoever without the written permission of HSCC is prohibited.

**NOTES**

1. ALL DIMENSIONS ARE IN MM.
2. ALL DIMENSIONS ARE TO BE READ AND NOT MEASURED.

S.NO.	TYPE	WEIGHT	C.B.L.	LNTH.
1	D	2000	—	2150
2	D1	1000	—	2150
3	D2	1500	—	2150
4	D3	800	—	2150
5	D4	1350	—	2150
6	D5	1200	—	2150
7	D6	1000	150	2300
8	DW	1000	—	2150
9	DW1	4500	—	2900
10	DW2	2015	900	2600
11	W	2000	900	2600
12	W1	1800	900	2600
13	W2	1500	900	2600
14	W3	1300	900	2600
15	W4	2400	900	2600
16	W5	900	900	2600
17	W6	600	900	2600
18	W7	1000	900	2600
19	W8	892.50	900	2600
20	W9	775	900	2600
21	V1	900	1700	2600
22	V2	600	1700	2600



**ELEVATION C**

SI	DATE	REVISION AS PER THE COMMENTS OF VETTING COMMITTEE

**PROJECT**  
 PROPOSED  
 100 BEDDED HOSPITAL  
 ALIGARH, U.P.

**TITLE**  
 TENDER DRAWING  
 (ARCHITECTURE)

ELEVATION C

HSCC/ALIGARH/TD/HOSP/009/R-1  
 Drawing No.

Job No.	1:175 Scale	FEB 14, 2014 Date
---------	----------------	----------------------

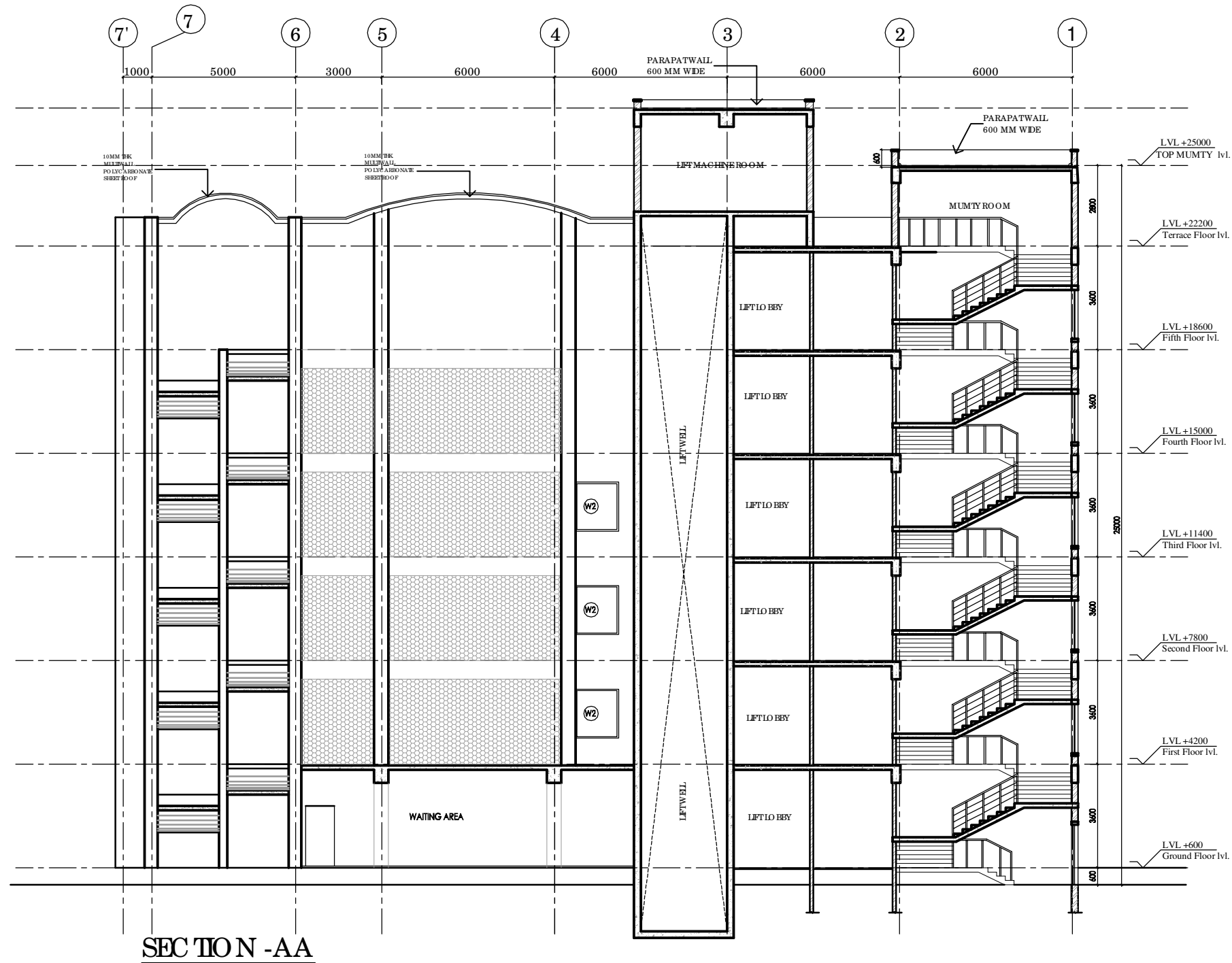
RK App by	SS Rev. by	LK Prep. by
--------------	---------------	----------------

This drawing with all its contents is the sole Hospital Services Consultancy Corporation intellectual property of the (India) LTD. Copying of this drawing or part thereof, or its use in any form whatsoever without the written permission of HSCC is prohibited.

**NOTES**

1. ALL DIMENSIONS ARE IN MM.
2. ALL DIMENSIONS ARE TO BE READ AND NOT MEASURED.

S.NO.	TYPE	WEIGHT	C.B.L.	L.N.B.E.
1	D	2000	—	2150
2	D1	1000	—	2150
3	D2	1500	—	2150
4	D3	800	—	2150
5	D4	1350	—	2150
6	D5	1200	—	2150
7	D6	1000	150	2300
8	SW	1000	—	2150
9	DW1	4500	—	2500
10	DW2	2015	900	2600
11	W	2000	900	2600
12	W1	1800	900	2600
13	W2	1500	900	2600
14	W3	1300	900	2600
15	W4	2400	900	2600
16	W5	900	900	2600
17	W6	600	900	2600
18	W7	1000	900	2600
19	W8	892.50	900	2600
20	W9	775	900	2600
21	V1	900	1700	2600
22	V2	600	1700	2600



RI	DATE	REVISION AS PER THE COMMENTS OF VETTING COMMITTEE
REV	DATE	DESCRIPTION
REVISION		

**PROJECT**

PROPOSED  
100 BEDDED HOSPITAL  
ALIGARH, U.P.

**TITLE**

TENDER DRAWING  
(ARCHITECTURE)

**SECTION AA**

HSCC/ALIGARH/TD/HOSP/011/R-1

Drawing No.

Job No.	1:175 Scale	FEB 14, 2014 Date
---------	----------------	----------------------

App by	SS Rev. by	LK Prep. by
--------	---------------	----------------