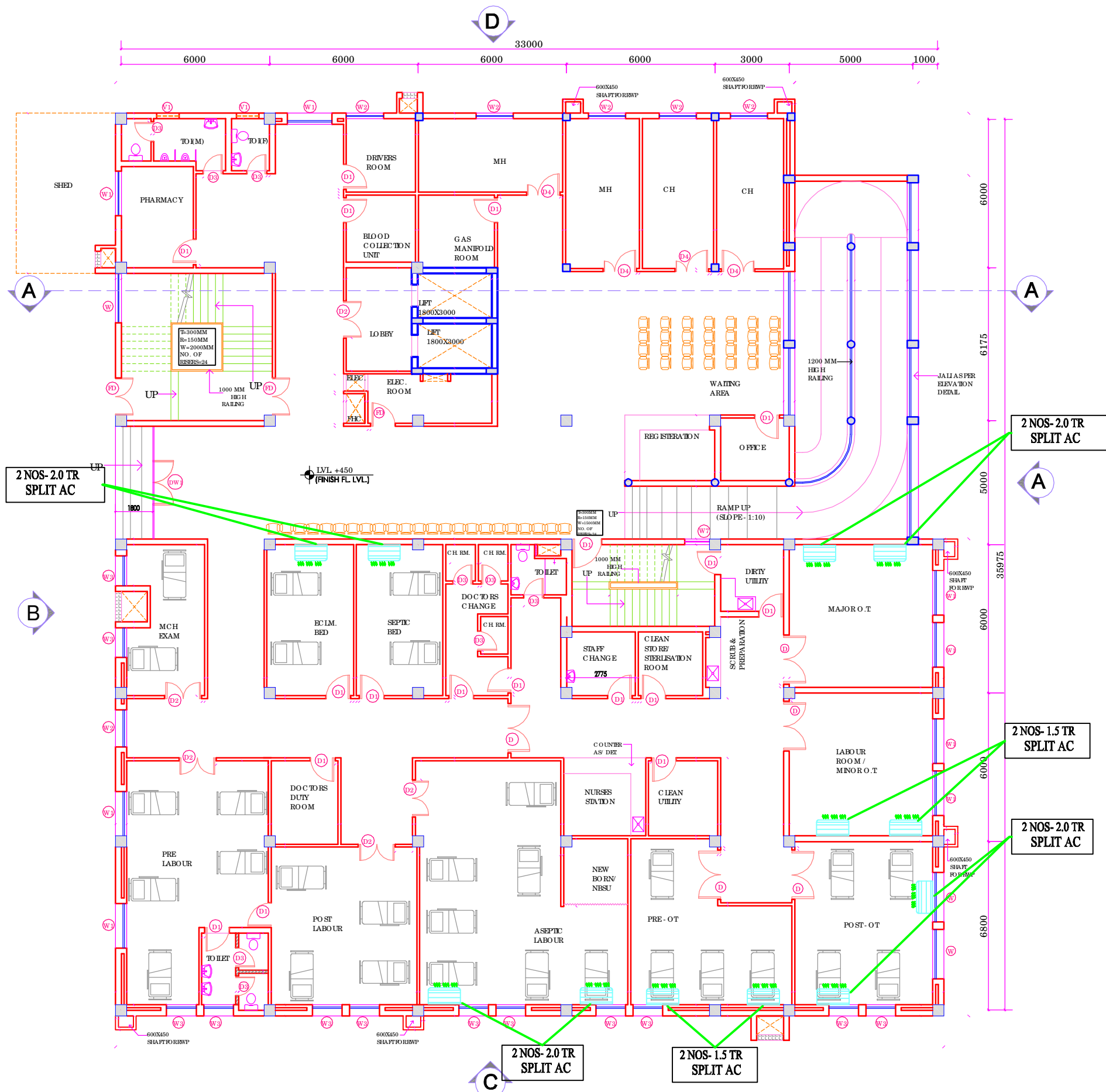


This drawing with all its contents is the sole property of the (HSCC) LTD. Copying of this drawing or part thereof or its use in any form whatsoever without the written permission of HSCC is prohibited.

**NOTES**  
 1. ALL DIMENSIONS ARE IN MM.  
 2. ALL DIMENSIONS ARE TO BE READ AND NOT MEASURED.

S.NO.	TYPE	W X H	C. EL.	LEVEL
1	D	2000	—	2150
2	D1	1000	—	2150
3	D2	1500	—	2150
4	D3	800	—	2150
5	D4	1350	—	2150
6	D5	1200	—	2150
7	D6	1000	150	2300
8	DW	1000	—	2150
9	DW1	4500	—	2900
10	DW2	2615	900	2900
11	W	2000	900	2600
12	W1	1800	900	2600
13	W2	1500	900	2600
14	W3	1200	900	2600
15	W4	2400	900	2600
16	W5	900	900	2600
17	W6	600	900	2600
18	W7	1000	900	2600
19	W8	892.50	900	2600
20	W9	775	900	2600
21	V1	900	1700	2600
22	V2	600	1700	2600



**GROUND FLOOR PLAN**  
**FLOOR TO FLOOR HT - 3600 MM**

REV	DATE	DESCRIPTION
01	09-14	REVISED AS PER THE COMMENTS OF TESTING COMMITTEE

**PROJECT**  
 PROPOSED  
 100 BEDDED HOSPITAL  
 ALIGARH, U.P.

**TITLE**  
 TENDER DRAWING  
 (HVAC LAYOUT)  
**GROUND FLOOR PLAN**

HSCC/D/BE/HVAC/UP-AUGARH/AC-01		
Drawing No.		
Job No.	1:175	18 FEB 14, 2014
App by	Rev. by	Prep. by

HSCC (INDIA) LIMITED  
 (A GOVERNMENT OF INDIA ENTERPRISE)  
**HSCC**  
 NEW DELHI INDIA

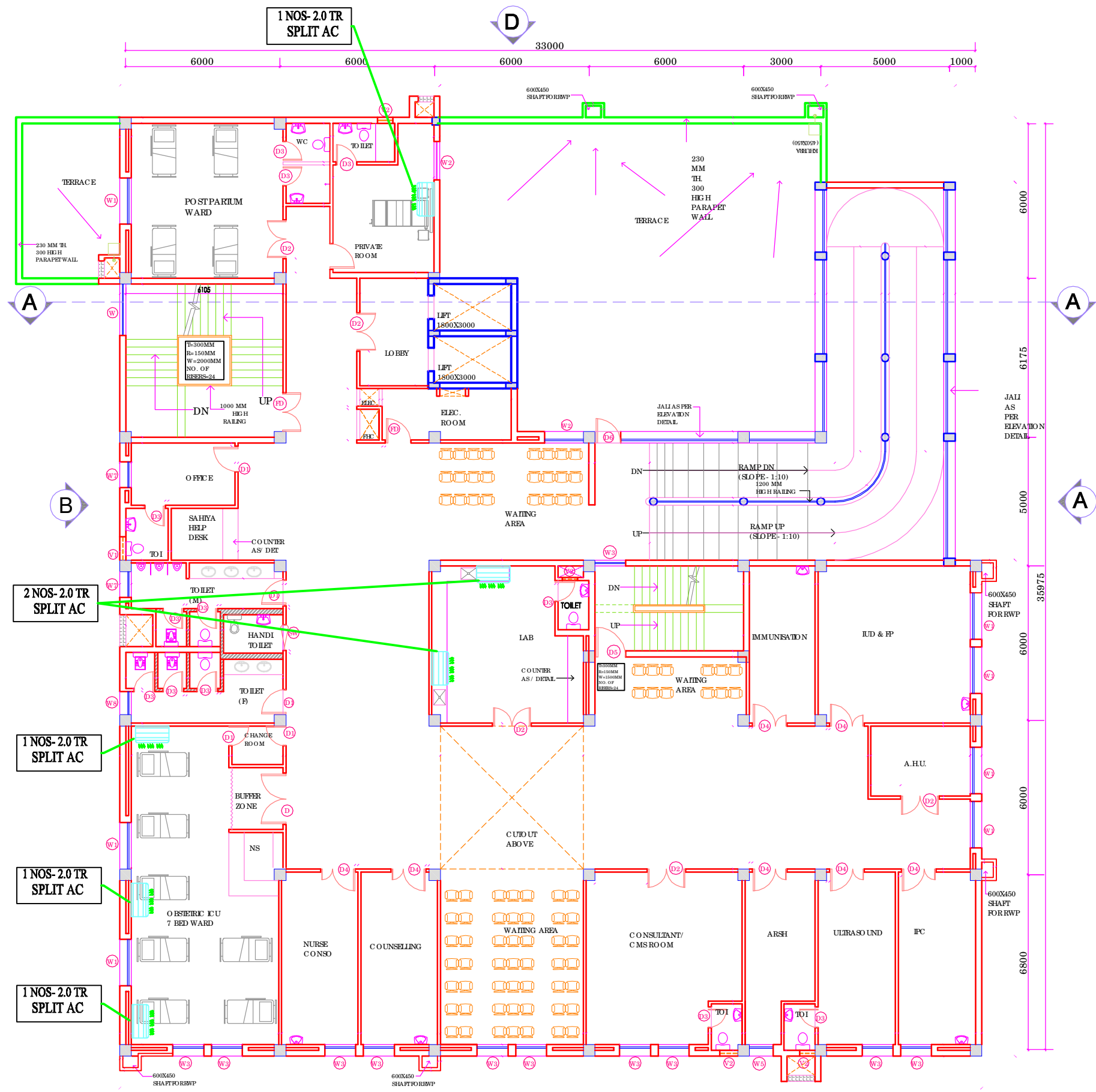
PRODUCED BY AN AUTODESK EDUCATIONAL PRODUCT

PRODUCED BY AN AUTODESK EDUCATIONAL PRODUCT

This drawing with all its contents is the sole property of the Hospital Services Consultancy Corporation Intellectual property of the (HSCC) LTD. Copying of this drawing or part thereof for its use in any form whatsoever without the written permission of HSCC is prohibited.

**NOTES**  
 1. ALL DIMENSIONS ARE IN MM.  
 2. ALL DIMENSIONS ARE TO BE READ AND NOT MEASURED.

SNO	TYPE	W/HT	C.B.L.	LFT/HT
1	D1	2000	---	2150
2	D2	1500	---	2150
3	D3	800	---	2150
4	D4	1350	---	2150
5	D5	1200	---	2150
6	D6	1000	150	2300
7	D7	1000	---	2150
8	D8	4500	---	2900
9	DW1	2815	900	2600
10	DW2	2815	900	2600
11	W1	1800	900	2600
12	W2	1500	900	2600
13	W3	1200	900	2600
14	W4	2400	900	2600
15	W5	900	900	2600
16	W6	600	900	2600
17	W7	1000	900	2600
18	W8	892.50	900	2600
19	W9	775	900	2600
20	V1	900	1700	2600
21	V2	600	1700	2600



**FIRST FLOOR PLAN**  
**OPD + OBSTETRIC ICU**  
**PRIVATE ROOM - 1 BED**  
**FLOOR TO FLOOR HT - 3600 MM**

REV	DATE	DESCRIPTION
01	09-01-14	REVISED AS PER THE COMMENTS OF VETTING COMMITTEE

**PROJECT**  
 PROPOSED  
 100 BEDDED HOSPITAL  
 ALIGARH, U.P.

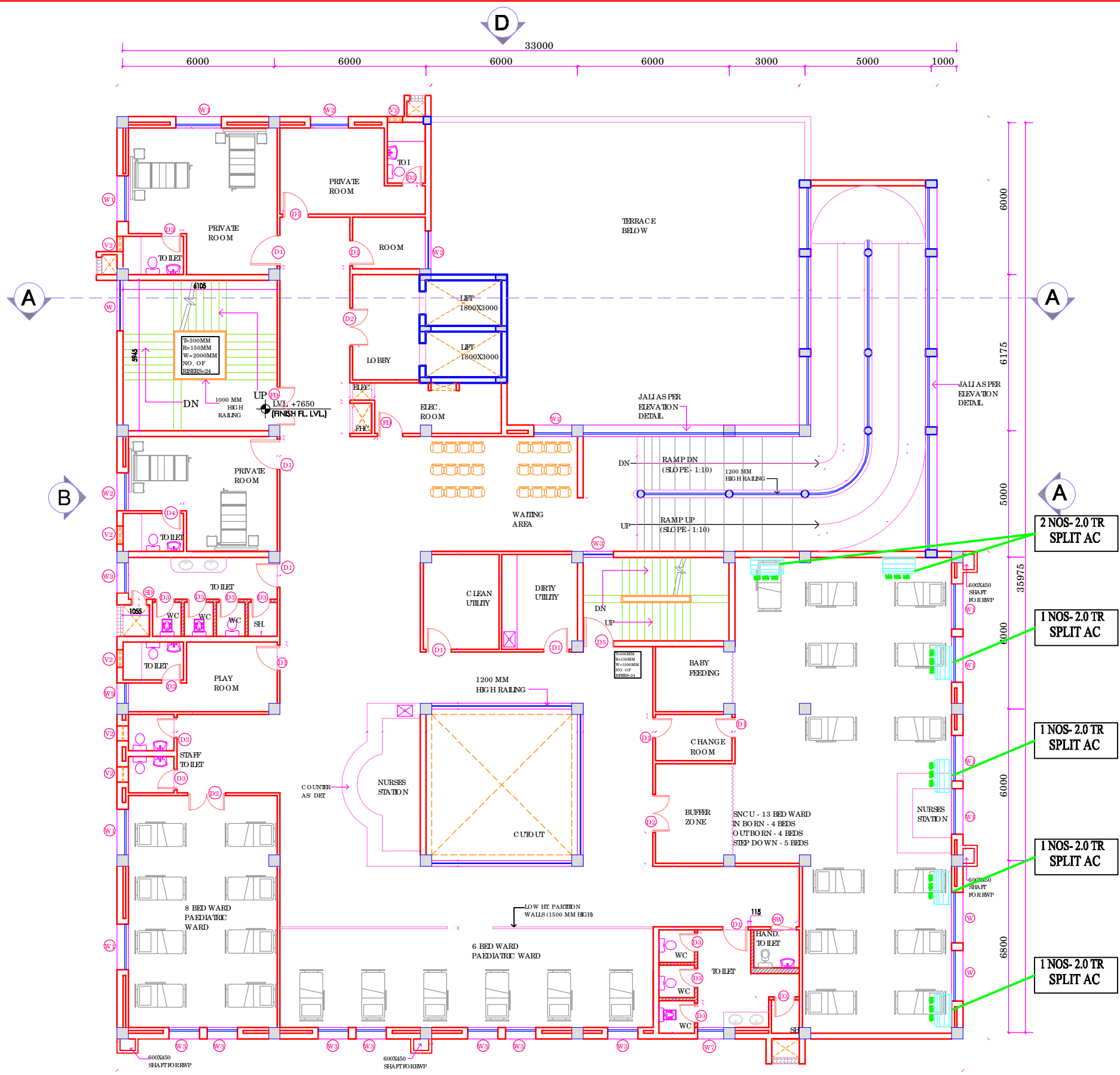
**TITLE**  
**TENDER DRAWING**  
 (HVAC LAYOUT)  
**FIRST FLOOR PLAN**

HSCC/D&E/HVAC/UP-ALIGARH/AC-05		
Drawing No.	1:175	FEB 14, 2014
Job No.	Scale	Date
App by	Rev. by	Prep. by

HSCC (INDIA) LIMITED  
 (A GOVERNMENT OF INDIA ENTERPRISE)  
**HSCC**  
 NEW DELHI INDIA

PRODUCED BY AN AUTODESK EDUCATIONAL PRODUCT

PRODUCED BY AN AUTODESK EDUCATIONAL PRODUCT



**2ND FLOOR**  
**PAEDIA TRIC CARE**  
**SNC U WARD - 13 BEDS**  
**PAEDIA TRIC WARD - 14 BEDS, PRIVATE ROOMS - 5 BEDS**  
**FLOOR TO FLOOR HT - 3600 MM**

This drawing with all its contents is the sole property of the (India) Ltd. Copying of this drawing or part thereof or its use in any form whatsoever without the written permission of HSCC is prohibited.

**NOTES**  
 1. ALL DIMENSIONS ARE IN MM.  
 2. ALL DIMENSIONS ARE TO BE READ AND NOT MEASURED.

S.NO.	TYPE	WIDTH	C. EL.	LEVEL
1	D	2000	---	2150
2	D1	1000	---	2150
3	D2	1500	---	2150
4	D3	800	---	2150
5	D4	1350	---	2150
6	D5	1200	---	2150
7	D6	1000	---	2150
8	DW	1000	---	2150
9	DW1	4500	---	2900
10	DW2	2615	900	2900
11	W	2000	900	2600
12	W1	1800	900	2600
13	W2	1500	900	2600
14	W3	1200	900	2600
15	W4	2400	900	2600
16	W5	900	900	2600
17	W6	600	900	2600
18	W7	1000	900	2600
19	W8	892.50	900	2600
20	W9	775	900	2600
21	V1	900	1700	2600
22	V2	600	1700	2600

REV.	DATE	DESCRIPTION

**PROJECT**  
 PROPOSED  
 100 BEDDED HOSPITAL  
 ALIGARH, U.P.

**TITLE**  
 TENDER DRAWING  
 (HVAC LAYOUT)  
 SECOND FLOOR PLAN

HSCC/D&E/HVAC/UP-ALIGARH/AC-02  
 Drawing No.

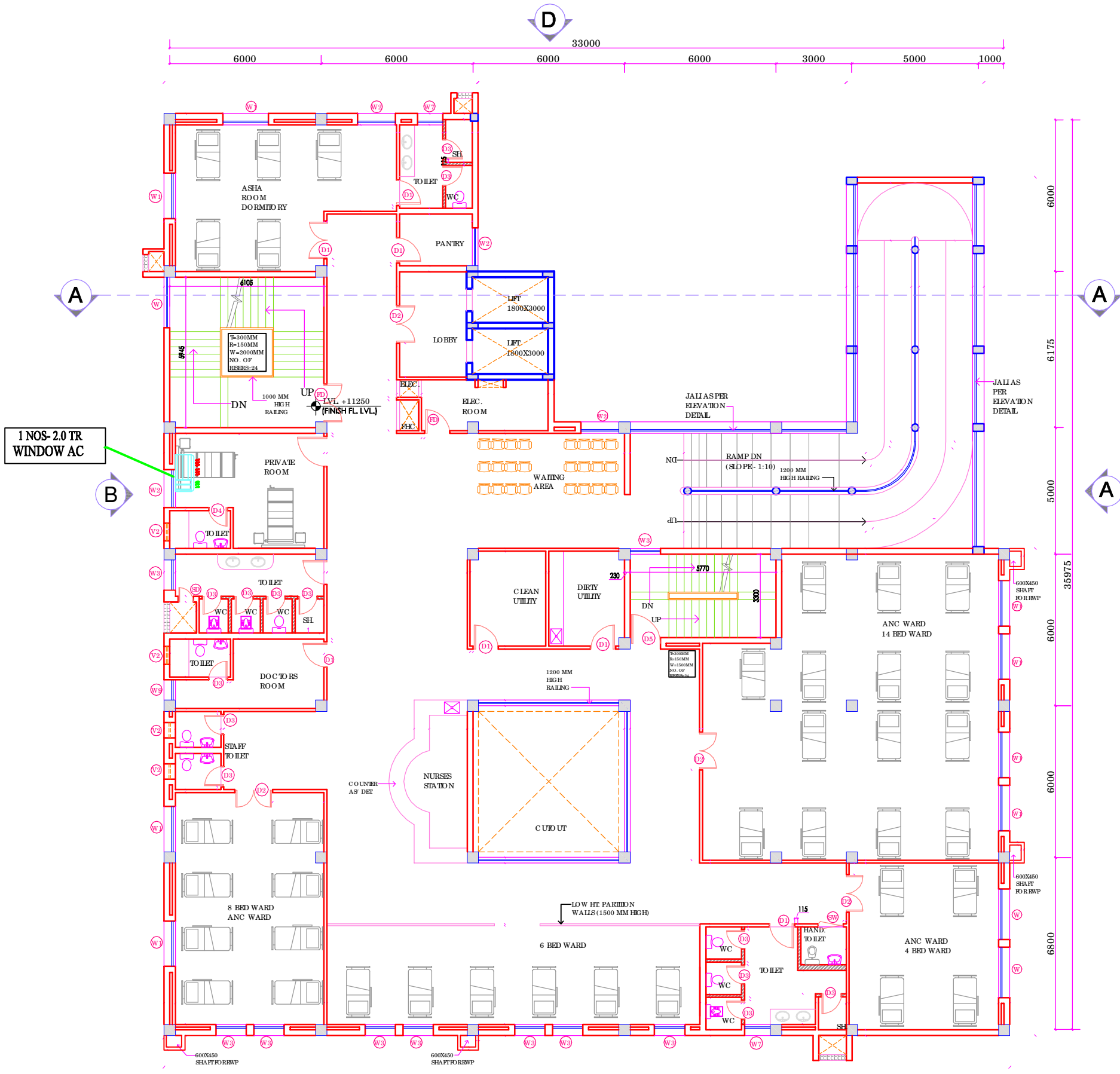
Job No.	1:175 Scale	FEB 14, 2014 Date
App by	Rev. by	Prep. by

HSCC (INDIA) LIMITED  
 (A GOVERNMENT OF INDIA ENTERPRISE)  
**HSCC**  
 NEW DELHI INDIA

This drawing with all its contents is the sole property of the Hospital Services Consultancy Corporation Intellectual property of the (HSCC) LTD. Copying of this drawing or part thereof or its use in any form whatsoever without the written permission of HSCC is prohibited.

**NOTES**  
 1. ALL DIMENSIONS ARE IN MM.  
 2. ALL DIMENSIONS ARE TO BE READ AND NOT MEASURED.

S.NO.	TYPE	W*H*E	C.EL.	LEVEL
1	D	2000	---	2150
2	D1	1000	---	2150
3	D2	1500	---	2150
4	D3	800	---	2150
5	D4	1350	---	2150
6	D5	1200	---	2150
7	D6	1000	150	2300
8	DW	1000	---	2150
9	DW1	4500	---	2900
10	DW2	2615	900	2900
11	W	2000	900	2600
12	W1	1800	900	2600
13	W2	1500	900	2600
14	W3	1200	900	2600
15	W4	2400	900	2600
16	W5	900	900	2600
17	W6	600	900	2600
18	W7	1000	900	2600
19	W8	892.50	900	2600
20	W9	775	900	2600
21	V1	900	1700	2600
22	V2	600	1700	2600



1 NOS- 2.0 TR WINDOW AC

**3RD FLOOR -**  
**ANTE NATAL CARE WARD - 32 BEDS**  
**ASHA ROOM DORMITORY - 5 BEDS**  
**PRIVATE ROOM - 2 BEDS**  
**FLOOR TO FLOOR HT - 3600 MM**

REV	DATE	DESCRIPTION

**PROJECT**  
 PROPOSED  
 100 BEDDED HOSPITAL  
 ALIGARH, U.P.

**TITLE**  
 TENDER DRAWING  
 (HVAC LAYOUT)  
 THIRD FLOOR PLAN

HSCC/D&E/HVAC/UP-ALIGARH/AC-06		
Drawing No.		
Job No.	1:175	FEB 14, 2014
	Scale	Date
App by	Rev. by	Prep. by

HSCC (INDIA) LIMITED  
 (A GOVERNMENT OF INDIA ENTERPRISE)  
**HSCC**  
 NEW DELHI INDIA

PRODUCED BY AN AUTODESK EDUCATIONAL PRODUCT

PRODUCED BY AN AUTODESK EDUCATIONAL PRODUCT

This drawing with all its contents is the sole property of the (India) LTD. Copying of this drawing or part thereof or its use in any form whatsoever without the written permission of HSCC is prohibited.

**NOTES**  
 1. ALL DIMENSIONS ARE IN MM.  
 2. ALL DIMENSIONS ARE TO BE READ AND NOT MEASURED.

S.NO.	TYPE	WxHxI	C.EL.	LEVEL
1	D	2000	—	2150
2	D1	1000	—	2150
3	D2	1500	—	2150
4	D3	800	—	2150
5	D4	1350	—	2150
6	D5	1200	—	2150
7	D6	1000	150	2300
8	DW	1000	—	2150
9	DW1	4500	—	2900
10	DW2	2615	900	2900
11	W	2000	900	2600
12	W1	1800	900	2600
13	W2	1500	900	2600
14	W3	1200	900	2600
15	W4	2400	900	2600
16	W5	900	900	2600
17	W6	600	900	2600
18	W7	1000	900	2600
19	W8	892.50	900	2600
20	W9	775	900	2600
21	V1	900	1700	2600
22	V2	600	1700	2600



**4TH FLOOR -**  
**POSTNATAL CARE WARD - 30 BEDS**  
**PRIVATE ROOM - 2 BEDS**  
**FLOOR TO FLOOR HT - 3600 MM**

REV	DATE	DESCRIPTION
01	09-01-14	REVISED AS PER THE COMMENTS OF VESTING COMMITTEE

**PROJECT**  
 PROPOSED  
 100 BEDDED HOSPITAL  
 ALIGARH, U.P.

**TITLE**  
 TENDER DRAWING  
 (HVAC LAYOUT)  
 FOURTH FLOOR PLAN

HSCC/D/BE/HVAC/UP-ALIGARH/AC-03		
Job No.	1:175	18 FEB 14, 2014
App by	Rev. by	Prep. by

HSCC (INDIA) LIMITED  
 (A GOVERNMENT OF INDIA ENTERPRISE)  
**HSCC**  
 NEW DELHI INDIA

PRODUCED BY AN AUTODESK EDUCATIONAL PRODUCT

PRODUCED BY AN AUTODESK EDUCATIONAL PRODUCT

This drawing with all its contents is the sole property of the (India) Ltd. Copying of this drawing or part thereof or its use in any form whatsoever without the written permission of HSCC is prohibited.

**NOTES**  
 1. ALL DIMENSIONS ARE IN MM.  
 2. ALL DIMENSIONS ARE TO BE READ AND NOT MEASURED.

S.NO.	TYPE	W/TH	C/EL	LEVEL
1	D	2000	—	2150
2	D1	1000	—	2150
3	D2	1500	—	2150
4	D3	800	—	2150
5	D4	1350	—	2150
6	D5	1200	—	2150
7	D6	1000	150	2300
8	DW	1000	—	2150
9	DW1	4500	—	2900
10	DW2	2615	900	2900
11	W	2000	900	2600
12	W1	1800	900	2600
13	W2	1500	900	2600
14	W3	1200	900	2600
15	W4	2400	900	2600
16	W5	900	900	2600
17	W6	800	900	2600
18	W7	1000	900	2600
19	W8	892.50	900	2600
20	W9	775	900	2600
21	V1	900	1700	2600
22	V2	600	1700	2600

REV	DATE	DESCRIPTION
01	09-01-14	REVISED AS PER THE COMMENTS OF VESTING COMMITTEE

**PROJECT**  
 PROPOSED  
 100 BEDDED HOSPITAL  
 ALIGARH, U.P.

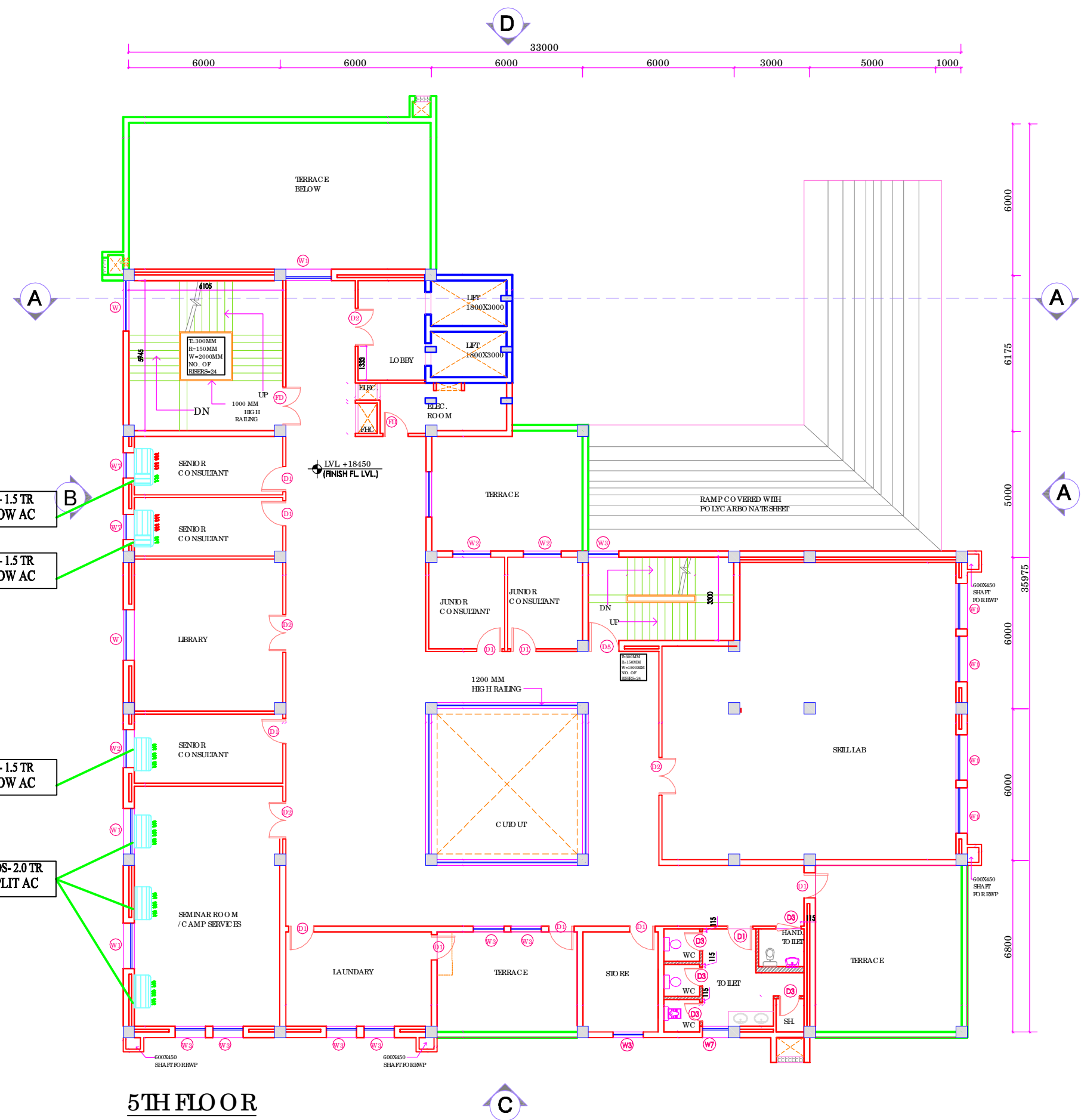
**TITLE**  
 TENDER DRAWING  
 (HVAC LAYOUT)  
 FIFTH FLOOR PLAN

HSCC/D&E/HVAC/UP-ALIGARH/AC-07  
 Drawing No.

Job No. 1:175 Scale FEB 14, 2014 Date

App by Rev. by Prep. by

HSCC (INDIA) LIMITED  
 (A GOVERNMENT OF INDIA ENTERPRISE)  
**HSCC**  
 NEW DELHI INDIA



**5TH FLOOR**

PRODUCED BY AN AUTODESK EDUCATIONAL PRODUCT

PRODUCED BY AN AUTODESK EDUCATIONAL PRODUCT