

HSCC/Medical Equipment/SJH

Date: 15.7.2015

Amendment-I

Ref.: Tender No.: HSCC/SJH/Medical Equipment/2015/5

Dated 07.07.2015

Sub.: Procurement of Medical Equipment for New Emergency Block & Super-Specialty Block at Safderjung Hospital, New Delhi.

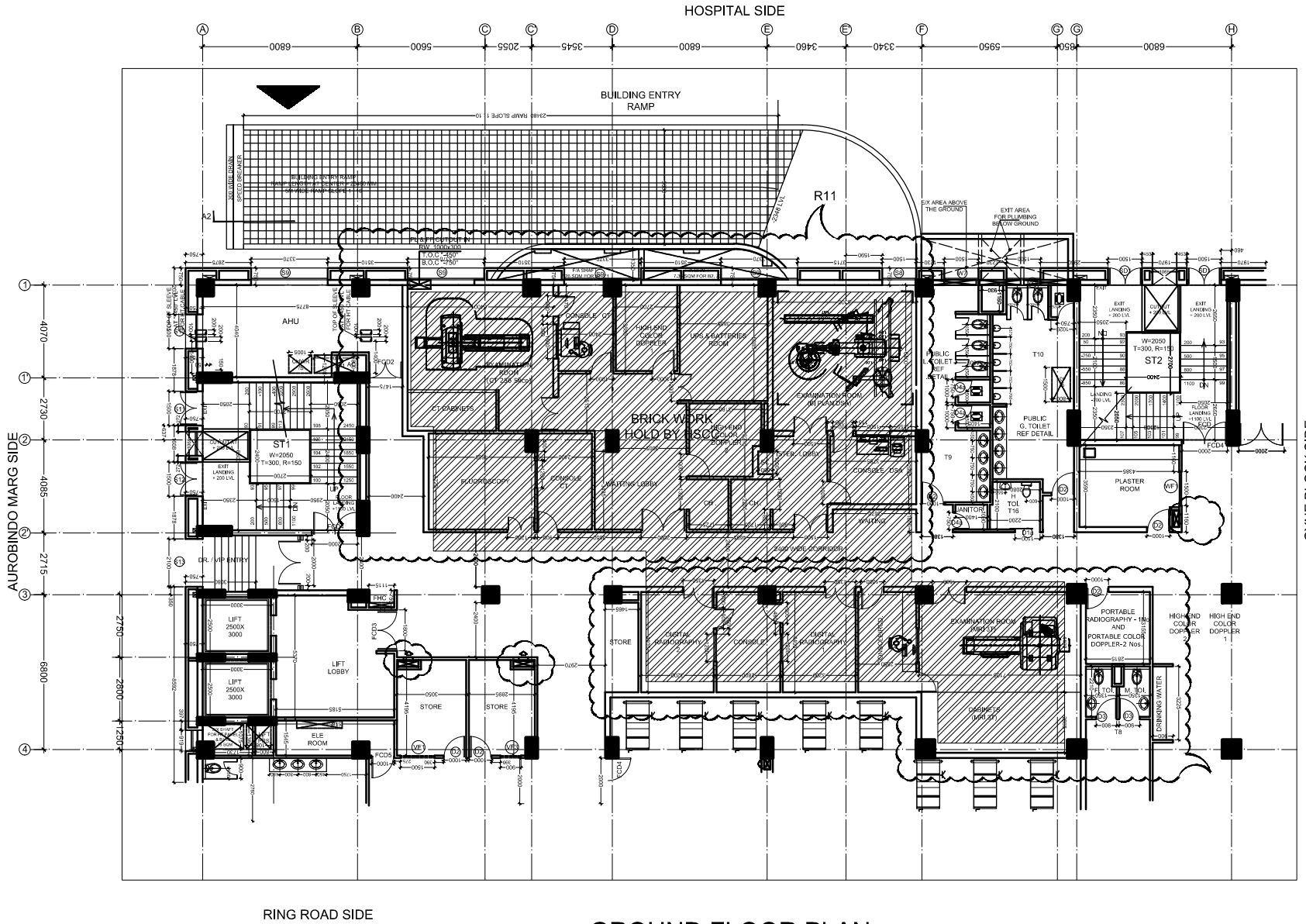
Please find enclosed the site lay-out drawing of Radiology Department for Emergency Block at Safderjung Hospital, New Delhi for the information to the prospective bidders.

All other tender terms and conditions remain unchanged.

Amendment to be issued will be uploaded on websites www.tenderwizard.com/HSCC & www.hsccltd.com.

**Medical Superintendent
Safderjung Hospital & VMMC,
New Delhi.**

PRODUCED BY AN AUTODESK EDUCATIONAL PRODUCT



GROUND FLOOR PLAN
PART PLAN RADIOLOGY

DOOR & WINDOW SCHEDULE OF OPENINGS & ABOVE

NO.	WIDTH	HEIGHT	CELL	FINISH	REMARKS
W1	1500	2100	900	2100	FK
W2	1200	1700	900	2100	FK
W3	1500	1500	900	2100	FK
W4	1500	1700	900	2100	FK
W5	1500	300	2250	2250	FK
W6	1500	300	2250	2250	FK
W7	1500	300	2250	2250	FK
W8	1500	300	2250	2250	FK
W9	1500	300	2250	2250	FK
W10	1500	300	2250	2250	FK

DOOR & WINDOW SCHEDULE

NO.	WIDTH	HEIGHT	CELL	FINISH	REMARKS
W11	1500	2100	900	2100	FK
W12	1200	1700	900	2100	FK
W13	1500	1500	900	2100	FK
W14	1500	1700	900	2100	FK
W15	1500	300	2250	2250	FK
W16	1500	300	2250	2250	FK
W17	1500	300	2250	2250	FK
W18	1500	300	2250	2250	FK
W19	1500	300	2250	2250	FK
W20	1500	300	2250	2250	FK

DOOR & WINDOW SCHEDULE

NO.	WIDTH	HEIGHT	CELL	FINISH	REMARKS
W21	1500	2100	900	2100	FK
W22	1200	1700	900	2100	FK
W23	1500	1500	900	2100	FK
W24	1500	1700	900	2100	FK
W25	1500	300	2250	2250	FK
W26	1500	300	2250	2250	FK
W27	1500	300	2250	2250	FK
W28	1500	300	2250	2250	FK
W29	1500	300	2250	2250	FK
W30	1500	300	2250	2250	FK

DOOR & WINDOW SCHEDULE

NO.	WIDTH	HEIGHT	CELL	FINISH	REMARKS
W31	1500	2100	900	2100	FK
W32	1200	1700	900	2100	FK
W33	1500	1500	900	2100	FK
W34	1500	1700	900	2100	FK
W35	1500	300	2250	2250	FK
W36	1500	300	2250	2250	FK
W37	1500	300	2250	2250	FK
W38	1500	300	2250	2250	FK
W39	1500	300	2250	2250	FK
W40	1500	300	2250	2250	FK

DOOR & WINDOW SCHEDULE

NO.	WIDTH	HEIGHT	CELL	FINISH	REMARKS
W41	1500	2100	900	2100	FK
W42	1200	1700	900	2100	FK
W43	1500	1500	900	2100	FK
W44	1500	1700	900	2100	FK
W45	1500	300	2250	2250	FK
W46	1500	300	2250	2250	FK
W47	1500	300	2250	2250	FK
W48	1500	300	2250	2250	FK
W49	1500	300	2250	2250	FK
W50	1500	300	2250	2250	FK

DOOR & WINDOW SCHEDULE

NO.	WIDTH	HEIGHT	CELL	FINISH	REMARKS
W51	1500	2100	900	2100	FK
W52	1200	1700	900	2100	FK
W53	1500	1500	900	2100	FK
W54	1500	1700	900	2100	FK
W55	1500	300	2250	2250	FK
W56	1500	300	2250	2250	FK
W57	1500	300	2250	2250	FK
W58	1500	300	2250	2250	FK
W59	1500	300	2250	2250	FK
W60	1500	300	2250	2250	FK

DOOR & WINDOW SCHEDULE

NO.	WIDTH	HEIGHT	CELL	FINISH	REMARKS
W61	1500	2100	900	2100	FK
W62	1200	1700	900	2100	FK
W63	1500	1500	900	2100	FK
W64	1500	1700	900	2100	FK
W65	1500	300	2250	2250	FK
W66	1500	300	2250	2250	FK
W67	1500	300	2250	2250	FK
W68	1500	300	2250	2250	FK
W69	1500	300	2250	2250	FK
W70	1500	300	2250	2250	FK

DOOR & WINDOW SCHEDULE

NO.	WIDTH	HEIGHT	CELL	FINISH	REMARKS
W71	1500	2100	900	2100	FK
W72	1200	1700	900	2100	FK
W73	1500	1500	900	2100	FK
W74	1500	1700	900	2100	FK
W75	1500	300	2250	2250	FK
W76	1500	300	2250	2250	FK
W77	1500	300	2250	2250	FK
W78	1500	300	2250	2250	FK
W79	1500	300	2250	2250	FK
W80	1500	300	2250	2250	FK

DOOR & WINDOW SCHEDULE

NO.	WIDTH	HEIGHT	CELL	FINISH	REMARKS
W81	1500	2100	900	2100	FK
W82	1200	1700	900	2100	FK
W83	1500	1500	900	2100	FK
W84	1500	1700	900	2100	FK
W85	1500	300	2250	2250	FK
W86	1500	300	2250	2250	FK
W87	1500	300	2250	2250	FK
W88	1500	300	2250	2250	FK
W89	1500	300	2250	2250	FK
W90	1500	300	2250	2250	FK

DOOR & WINDOW SCHEDULE

NO.	WIDTH	HEIGHT	CELL	FINISH	REMARKS
W91	1500	2100	900	2100	FK
W92	1200	1700	900	2100	FK
W93	1500	1500	900	2100	FK
W94	1500	1700	900	2100	FK
W95	1500	300	2250	2250	FK
W96	1500	300	2250	2250	FK
W97	1500	300	2250	2250	FK
W98	1500	300	2250	2250	FK
W99	1500	300	2250	2250	FK
W100	1500	300	2250	2250	FK

NO.	DATE	DESCRIPTION
R12	21.04.15	AS PER REVISED BY HSCC (CLOUD MARKED)
R11	12.03.15	AS PER REVISED BY HSCC (CLOUD MARKED)
R10	24.11.14	AS/CLOUDE
R9	28.11.14	WINDOW ADD & LEDGE WALL REMOVE
R8	21.10.2014	ALL WALL IN FLY ASH EXCEPT IMAGING

REVISIONS

AGENCY
AHLUWALIA CONTRACTS (I) LTD.
A-177, OKHLA INDUSTRIAL AREA,
PHASE 4, NEW DELHI-110020
TEL: 91-11-48410500 FAX: 011-48410553
Email: mail@acilnet.com

ARCHITECTS
VIJAY GUPTA ARCHITECTS
601, CHIRANJIV TOWER
43, NEHRU PLACE, NEW DELHI
TEL: 011-26144763, 26463428, 26410790

SCALE: 1/50
DRAWN: MUKESH
CHECKED: []
APPROVED: []
DRAWING: []
GROUND FLOOR PLAN

HOSPITAL SERVICES CONSULTANCY CORPORATION (HSCC) LIMITED
(A GOVERNMENT OF INDIA ENTERPRISE)
HSCC
DRG. NO. **SJH-AR-05-06 / R11** **R1**
(GFC DRAWING) **12.03.15**