

Amendment I dated 04.04.2019
IFB no. HSCC/LHMC/ Equipment/01 dt. 23.03.2019

Procurement of Medical Equipment on behalf of the Director, Lady Harding Medical College & Hospital (LHMC), New Delhi:

All bidders are requested to note the following:

Sr.	Name of Medical Equipment	Revised Pre Bid Meeting Date & Time	Earlier Pre Bid Meeting Date & Time
1.	High Energy Linear Accelerator	13.04.2019 14:30 hrs IST	10.04.2019 11:00 hrs IST
2.	Wide Bore CT Simulator		
3.	High Dose Rate Brachytherapy System		

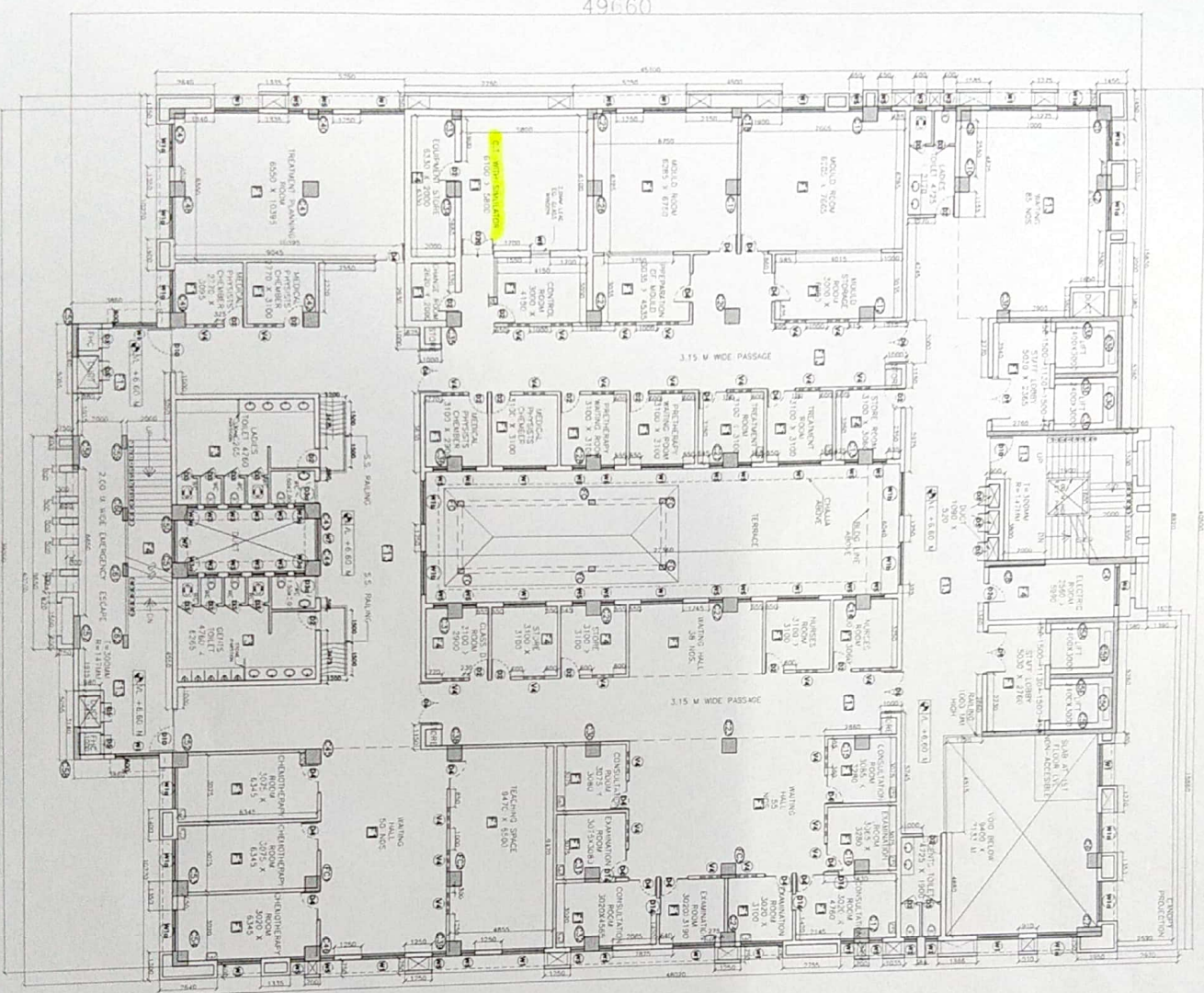
Attached two drawing for aforesaid Equipment.

All other terms and conditions of the tender enquiry document shall remain unchanged. Prospective bidders are advised to regularly visit HSCC website/ CPP as corrigendum /amendments etc. if any, will be notified on this portal only, no separate advertisement will published in the news papers.

Sr. CGM-I, HSCC (I) Ltd
For & on behalf of LHMC, New Delhi

ITEM	DESCRIPTION	UNIT	QUANTITY
1.1	PAINTED FLOOR FINISH	SQ. M	1000
1.2	PAINTED WALL FINISH	SQ. M	2000
1.3	PAINTED CEILING FINISH	SQ. M	1000
1.4	PAINTED DOOR FINISH	SQ. M	100
1.5	PAINTED WINDOW FINISH	SQ. M	100
1.6	PAINTED STAIR FINISH	SQ. M	100
1.7	PAINTED LIFT FINISH	SQ. M	100
1.8	PAINTED CORRIDOR FINISH	SQ. M	1000
1.9	PAINTED HALL FINISH	SQ. M	1000
1.10	PAINTED ROOM FINISH	SQ. M	1000
1.11	PAINTED KITCHEN FINISH	SQ. M	100
1.12	PAINTED BATH FINISH	SQ. M	100
1.13	PAINTED TOILET FINISH	SQ. M	100
1.14	PAINTED STORE FINISH	SQ. M	100
1.15	PAINTED LABORATORY FINISH	SQ. M	100
1.16	PAINTED OPERATING THEATRE FINISH	SQ. M	100
1.17	PAINTED X-RAY FINISH	SQ. M	100
1.18	PAINTED RADIOLOGICAL FINISH	SQ. M	100
1.19	PAINTED PHARMACY FINISH	SQ. M	100
1.20	PAINTED DISPENSARY FINISH	SQ. M	100
1.21	PAINTED NURSING FINISH	SQ. M	100
1.22	PAINTED PATIENT FINISH	SQ. M	100
1.23	PAINTED VISITING FINISH	SQ. M	100
1.24	PAINTED WAITING FINISH	SQ. M	100
1.25	PAINTED RECEPTION FINISH	SQ. M	100
1.26	PAINTED OFFICE FINISH	SQ. M	100
1.27	PAINTED STORAGE FINISH	SQ. M	100
1.28	PAINTED JANETRY FINISH	SQ. M	100
1.29	PAINTED ELECTRICAL FINISH	SQ. M	100
1.30	PAINTED PLUMBING FINISH	SQ. M	100
1.31	PAINTED AIR CONDITIONING FINISH	SQ. M	100
1.32	PAINTED FIRE ALARM FINISH	SQ. M	100
1.33	PAINTED SECURITY FINISH	SQ. M	100
1.34	PAINTED SIGNAGE FINISH	SQ. M	100
1.35	PAINTED FURNITURE FINISH	SQ. M	100
1.36	PAINTED ELECTRICAL FITTINGS	SQ. M	100
1.37	PAINTED PLUMBING FITTINGS	SQ. M	100
1.38	PAINTED AIR CONDITIONING FITTINGS	SQ. M	100
1.39	PAINTED FIRE ALARM FITTINGS	SQ. M	100
1.40	PAINTED SECURITY FITTINGS	SQ. M	100
1.41	PAINTED SIGNAGE FITTINGS	SQ. M	100
1.42	PAINTED FURNITURE FITTINGS	SQ. M	100

ITEM	DESCRIPTION	UNIT	QUANTITY
1.1	PAINTED FLOOR FINISH	SQ. M	1000
1.2	PAINTED WALL FINISH	SQ. M	2000
1.3	PAINTED CEILING FINISH	SQ. M	1000
1.4	PAINTED DOOR FINISH	SQ. M	100
1.5	PAINTED WINDOW FINISH	SQ. M	100
1.6	PAINTED STAIR FINISH	SQ. M	100
1.7	PAINTED LIFT FINISH	SQ. M	100
1.8	PAINTED CORRIDOR FINISH	SQ. M	1000
1.9	PAINTED HALL FINISH	SQ. M	1000
1.10	PAINTED ROOM FINISH	SQ. M	1000
1.11	PAINTED KITCHEN FINISH	SQ. M	100
1.12	PAINTED BATH FINISH	SQ. M	100
1.13	PAINTED TOILET FINISH	SQ. M	100
1.14	PAINTED STORE FINISH	SQ. M	100
1.15	PAINTED LABORATORY FINISH	SQ. M	100
1.16	PAINTED OPERATING THEATRE FINISH	SQ. M	100
1.17	PAINTED X-RAY FINISH	SQ. M	100
1.18	PAINTED RADIOLOGICAL FINISH	SQ. M	100
1.19	PAINTED PHARMACY FINISH	SQ. M	100
1.20	PAINTED DISPENSARY FINISH	SQ. M	100
1.21	PAINTED NURSING FINISH	SQ. M	100
1.22	PAINTED PATIENT FINISH	SQ. M	100
1.23	PAINTED VISITING FINISH	SQ. M	100
1.24	PAINTED RECEPTION FINISH	SQ. M	100
1.25	PAINTED OFFICE FINISH	SQ. M	100
1.26	PAINTED STORAGE FINISH	SQ. M	100
1.27	PAINTED JANETRY FINISH	SQ. M	100
1.28	PAINTED ELECTRICAL FINISH	SQ. M	100
1.29	PAINTED PLUMBING FINISH	SQ. M	100
1.30	PAINTED AIR CONDITIONING FINISH	SQ. M	100
1.31	PAINTED FIRE ALARM FINISH	SQ. M	100
1.32	PAINTED SECURITY FINISH	SQ. M	100
1.33	PAINTED SIGNAGE FINISH	SQ. M	100
1.34	PAINTED FURNITURE FINISH	SQ. M	100
1.35	PAINTED ELECTRICAL FITTINGS	SQ. M	100
1.36	PAINTED PLUMBING FITTINGS	SQ. M	100
1.37	PAINTED AIR CONDITIONING FITTINGS	SQ. M	100
1.38	PAINTED FIRE ALARM FITTINGS	SQ. M	100
1.39	PAINTED SECURITY FITTINGS	SQ. M	100
1.40	PAINTED SIGNAGE FITTINGS	SQ. M	100
1.41	PAINTED FURNITURE FITTINGS	SQ. M	100



NOTES:
 1. The Architect shall be responsible for the design and construction of the building and shall be liable for any errors or omissions in the drawings.
 2. The Contractor shall be responsible for the execution of the work in accordance with the drawings and specifications.
 3. The Engineer shall be responsible for the supervision of the work and shall issue instructions and certificates as required.
 4. The Client shall be responsible for the payment of the contract sum and shall provide the site and access to the building.
 5. The drawings shall be read in conjunction with the specifications and the contract documents.
 6. The drawings shall be subject to the approval of the competent authority.
 7. The drawings shall be prepared in accordance with the standards of the Indian Standards Institution (ISI).
 8. The drawings shall be prepared in accordance with the standards of the International Standards Organization (ISO).
 9. The drawings shall be prepared in accordance with the standards of the American Institute of Architects (AIA).
 10. The drawings shall be prepared in accordance with the standards of the Royal Institute of British Architects (RIBA).
 11. The drawings shall be prepared in accordance with the standards of the Institution of Civil Engineers (ICE).
 12. The drawings shall be prepared in accordance with the standards of the Institution of Mechanical Engineers (IMECH).
 13. The drawings shall be prepared in accordance with the standards of the Institution of Chemical Engineers (IChemE).
 14. The drawings shall be prepared in accordance with the standards of the Institution of Electrical Engineers (IEE).
 15. The drawings shall be prepared in accordance with the standards of the Institution of Structural Engineers (IStructE).
 16. The drawings shall be prepared in accordance with the standards of the Institution of Mining Engineers (IMechE).
 17. The drawings shall be prepared in accordance with the standards of the Institution of Surveyors (InstS).
 18. The drawings shall be prepared in accordance with the standards of the Institution of Town Planners (InstP).
 19. The drawings shall be prepared in accordance with the standards of the Institution of Transport Engineers (InstTE).
 20. The drawings shall be prepared in accordance with the standards of the Institution of Water and Environmental Engineers (IWWA).

PROJECT
 COMPREHENSIVE REDEVELOPMENT PLAN OF LADY HARDING MEDICAL COLLEGE AND ASSOCIATE HOSPITAL, SHAHEED BHAGAT SINGH MARG, NEW DELHI.

TENDER DRAWING
 ONCOLOGY BLOCK
 First Floor Plan

HSCC/ T/09/D-02/R
 DRAWING NO.
 HSCC/ 2014
 DATE: June 2014

Prepared By: [Signature]
 Checked By: [Signature]
 Per. By: [Signature]

